



TIE ROD CYLINDERS

M1

DH SERIES

Designed for higher pressure systems, the DH features upgraded castings and heavy duty seals to assure peak performance and long and dependable service.

FEATURES:

- * 3000 psi working pressure - see chart
- * SAE ports - 9/16-18 on 2" & 2-1/2" bore, 3/4-16 on 3" bore & up
- * 1" pins - hardened steel on 3" bore & up



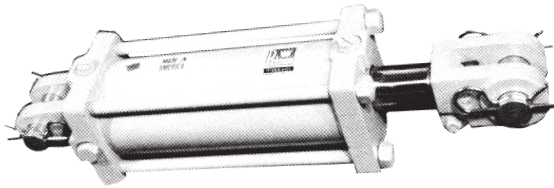
Description	Bore	Stroke	Rod Dia.	Closed Center	**	Sequence Number	Price
208DH-ASAE	2	8	1.06	20.25	3000		CALL
210DH	2	10	1.06	20.25	3000	100810	344.40
212DH	2	12	1.06	22.25	3000	100868	370.48
214DH	2	14	1.06	24.25	3000	100930	381.09
216DH	2	16	1.12	26.25	3000		CALL
218DH	2	18	1.12	28.25	3000	101058	406.89
220DH	2	20	1.12	30.25	3000	101124	417.37
224DH	2	24	1.12	34.25	2370	101186	444.19
230DH	2	30	1.12	40.25	1630	101196	469.08
2508DH-ASAE	2-1/2	8	1.25	20.25	3000	101254	336.63
2510DH	2-1/2	10	1.25	20.25	3000	101318	384.95
2512DH	2-1/2	12	1.25	22.25	3000	101380	391.81
2514DH	2-1/2	14	1.25	24.25	3000	101388	409.12
2516DH	2-1/2	16	1.5	26.25	3000		CALL
2518DH	2-1/2	18	1.25	28.25	3000	101510	435.45
2520DH	2-1/2	20	1.25	30.25	3000	101570	447.42
2524DH	2-1/2	24	1.25	34.25	2320	101634	477.90
2530DH	2-1/2	30	1.25	40.25	1590	101644	515.96
308DH-ASAE	3	8	1.25	20.25	3000	101700	427.30
310DH	3	10	1.25	20.25	3000	101823	471.11
312DH	3	12	1.25	22.25	3000	101828	451.74
314DH	3	14	1.50	24.25	3000	101890	500.99
316DH-ASAE	3	16	1.50	31.50	3000		CALL
318DH	3	18	1.50	28.25	3000	102020	484.09
320DH	3	20	1.50	30.25	3000	102086	543.31
324DH	3	24	1.50	34.25	3000	102148	544.09
330DH	3	30	1.50	40.25	2280	102212	632.42
336DH	3	36	1.50	46.25	1660	102276	623.42
3508DH-ASAE	3-1/2	8	1.25	20.25	3000	102342	508.92
3510DH	3-1/2	10	1.25	20.25	3000	102410	520.93
3512DH	3-1/2	12	1.50	22.25	3000	102468	519.76
3514DH	3-1/2	14	1.50	24.25	3000	102478	507.79
3516DH-ASAE	3-1/2	16	1.50	31.50	3000	102532	614.96
3518DH	3-1/2	18	1.50	28.25	3000	102596	433.87
3520DH	3-1/2	20	1.75	30.25	3000	102660	654.10
3524DH	3-1/2	24	1.75	34.25	3000		CALL
3530DH	3-1/2	30	1.75	40.25	3000	102736	567.38
3536DH	3-1/2	36	1.75	46.25	2240	102788	558.48
408DH-ASAE	4	8	1.25	20.25	3000	102906	547.74
410DH	4	10	1.50	20.62	3000	102922	616.29
412DH	4	12	1.50	22.62	3000	102984	702.65
414DH	4	14	1.50	24.62	3000	103056	620.53
416DH-ASAE	4	16	2.00	31.50	3000	103140	773.70
418DH	4	18	2.00	28.62	3000	103150	676.38
420DH	4	20	2.00	30.62	3000		CALL
424DH	4	24	2.00	34.62	3000	103240	878.65
430DH	4	30	2.00	40.62	3000	103300	933.23
436DH	4	36	2.00	46.62	2910		CALL

PRINCE HYDRAULIC CYLINDERS TIE ROD TYPE Max. Pressure - 3000 PSI

PRINCE 16", except 33616, 10716, 10816, 5416, 8316, 5516, and 5616 are 31-1/2" centers ASAE standard length.
PRINCE 33616, 10716, and 10816 cylinders are 26-1/4" centers short length.



PRINCE - Tie Rod Type 3/4" O-Ring Ports & 1" Clevis Pins; except C400's have 1-1/4" Clevis Pins & 5" have 7/8" O-Ring Ports & 1-1/4" Clevis Pins



Implement	Recommended Minimum Bore	Implement	Recommended Minimum Bore
2 bottom plow	3"	10' chisel	3"
3 bottom plow	3"	14' chisel	3-1/2"
4 bottom plow	3-1/2"	16' chisel	4"
5 bottom plow	4"	10' one-way	3"
10' disk	3"	12' one-way	3-1/2"
12' disk	3"	15' one-way	4"
14' disk	3-1/2"		

Chromed piston rod will operate at full pressure through 16" stroke. For longer than 16" stroke, check with Prince engineering department.

TIE ROD TYPE Max. Pressure - 3000 PSI

Size Inches Bore x Stroke	Distance Inches Center to Center Clevis Pins Cylinder Retracted	Wt. Lbs.	Prince Tie-Rod Cylinder Number	Shaft Diam. Inches	Our Sequence Number	Price Per Piece
2 x 4	14-1/2	18	B200040ABAAA07B	1	100739	\$306.13
2 x 6	16-1/4	19	B200060ABAAA07B	1	100748	Call
2 x 8	20-1/4	20	A200080ABAAA07B	1-1/8	100758	346.47
2 x 10	20-1/4	21	B200100ABAAA07B	1-1/16	100810	340.26
2 x 12	22-1/4	25	B200120ABAAA07B	1-1/8	100868	345.43
2 x 14	24-1/4	26	B200140ABAAA07B	1-1/8	100930	350.60
2 x 16	31-1/2	28	A200160ABAAA07B	1-1/8	100994
2 x 18	28-1/4	29	B200180ABAAA07B	1-1/8	101058	377.49
2 x 20	30-1/4	31	B200200ABAAA07B	1-1/8	101124	387.83
2 x 24	34-1/4	35	B200240ABAAA07B	1-1/8	101186	414.72
2 x 30	40-1/4	39	B200300ABAAA07B	1-1/8	101196	402.36
2-1/2 x 6	16-1/4	22	B250060ABAAA07B	1-1/4	101232	290.20
2-1/2 x 8	20-1/4	25	A250080ABAAA07B	1-1/4	101254	326.69
2-1/2x10	20-1/4	26	B250100ABAAA07B	1-1/4	101318	377.49
2-1/2x12	22-1/4	27	B250120ABAAA07B	1-1/4	101380	387.83
2-1/2x14	24-1/4	29	B250140ABAAA07B	1-1/4	101388	334.99
2-1/2x16	31-1/2	33	A250160ABAAA07B	1-1/4	101444	425.07
2-1/2x18	28-1/4	34	B250180ABAAA07B	1-1/4	101510	438.51
2-1/2x20	30-1/4	36	B250200ABAAA07B	1-1/4	101570	454.02
2-1/2x24	34-1/4	39	B250240ABAAA07B	1-1/4	101634	488.15
2-1/2x30	40-1/4	44	B250300ABAAA07B	1-1/4	101644	535.73
3 x 6	16-1/4	24	B300060ABAAA07B	1-3/8	101654	369.22
3 x 8	20-1/4	29	A300080ABAAA07B	1-3/8	101700	387.83
3 x 10	20-1/4	32	B300100ABAAA07B	1-1/4	101823	393.01
3 x 12	22-1/4	33	B300120ABAAA07B	1-3/8	101828	411.62
3 x 14	24-1/4	35	B300140ABAAA07B	1-3/8	101890	430.24
3 x 16	31-1/2	39	A300160ABAAA07B	1-3/8	101956	385.75
3 x 16	26-1/4	29	B300160ABAAA07B	1-3/8	101920	448.85
3 x 18	28-1/4	42	B300180ABAAA07B	1-1/2	102020	398.67
3 x 20	30-1/4	45	B300200ABAAA07B	1-3/8	102086	488.15
3 x 24	34-1/4	47	B300240ABAAA07B	1-1/2	102148	533.66
3 x 30	40-1/4	63	B300300ABAAA07B	1-3/8	102212	607.09
3 x 36	46-1/2	61	B300360ABAAA07B	1-3/8	102276	587.75
3 x 48	58-1/4	66	B300480ABAAA07B	1-3/8	102286	630.46
3-1/2x8	20-1/4	31	A350080ABAAA07B	1-1/4	102342	445.75
3-1/2x10	20-1/4	36	B350100ABAAA07B	1-3/8	102410	445.75
3-1/2x12	22-1/4	38	B350120ABAAA07B	1-3/8	102468	507.80

Size Inches Bore x Stroke	Distance Inches Center to Center Clevis Pins Cylinder Retracted	Wt. Lbs.	Prince Tie-Rod Cylinder Number	Shaft Diam. Inches	Our Sequence Number	Price Per Piece
3-1/2x14	24-1/4	41	B350140ABAAA07B	1-3/8	102478	\$351.60
3-1/2x16	31-1/2	46	A350160ABAAA07B	1-3/8	102532	504.70
3-1/2x16	26-1/4	33	B350160ABAAA07B	1-3/8	102526	414.01
3-1/2x18	28-1/4	47	B350180ABAAA07B	1-3/8	102596	433.87
3-1/2x20	30-1/4	49	B350200ABAAA07B	1-3/8	102660	547.10
3-1/2x24	34-1/4	54	B350240ABAAA07B	1-3/8	102726	532.48
3-1/2x30	40-1/4	64	B350300ABAAA07B	1-3/8	102736	567.38
3-1/2x36	46-1/4	66	B350360ABAAA07B	1-3/8	102788	558.48
3-1/2x48	58-1/4	73	B350480ABAAA07B	1-3/8	102798	687.45
4 x 8	20-1/4	45	A400080ABAAA07B	1-3/4	102906	538.83
4 x 8	20-1/4	48	C400080ABDDA03B	2	102903	439.44
4 x 10	20-1/4	48	B400100ABAAA07B	1-1/2	102922	562.62
4 x 12	22-1/4	49	B400120ABAAA07B	1-3/4	102984	591.58
4 x 14	24-1/4	51	B400140ABAAA07B	1-3/4	103056	620.53
4 x 16	31-1/2	61	A400160ABACA07B	1-3/4	103140	620.53
4 x 16	26-1/4	48	B400160ABACA07B	1-3/4	103137	647.42
4 x 16	31-1/2	64	C400160ABDDA07B	2	103139	602.95
4 x 18	28-1/4	62	B400180ABACA07B	1-3/4	103150	676.38
4 x 20	30-1/4	72	B400200ABACA07B	1-3/4	103174	629.38
4 x 24	34-1/4	74	B400240ABACA07B	1-3/4	103240	747.74
4 x 24	36-1/4	77	C400240ABDDA03B	2	103235	662.32
4 x 30	40-1/4	77	B400300ABACA07B	1-3/4	103300	832.55
4 x 36	46-1/4	83	B400360ABACA07B	1-3/4	103366	875.99
4 x 48	58-1/4	109	B400480ABACA07B	1-3/4	103430	808.33
5 x 8	20-1/4	67	B500080ACDDA07B	2	103490	745.68
5 x 12	24-1/4	75	B500120ACDDA07B	2	103499	772.57
5 x 14	26-1/4	80	B500140ACDDA07B	2	103510	698.93
5 x 16	31-1/2	84	A500160ACDDA07B	2	103521	885.30
5 x 18	30-1/4	90	B500180ACDDA07B	2	1035224	1001.75
5 x 20	32-1/4	95	B500200ACDDA07B	2	103524	941.14
5 x 24	36-1/4	104	B500240ACDDA07B	2	103528	877.63
5 x 30	42-1/4	108	B500300ACDDA07B	2	103534	1085.94
5 x 36	48-1/4	118	B500360ACDDA07B	2	103540	1092.65
5 x 48	60-1/4	161	B500480ACDDA07B	2	103549	1242.21

ASK FOR QUANTITY DISCOUNT Prices subject to change without notice.



CYLINDERS 2500 PSI Tie-Rod Cylinders

M3

Model	Bore X Stroke	Retract	Rod Dia.	Column Load (LBS)/PSI*	Sequence #	Price
W300040-S	3 X 4	14.25	1.25	FULL PSI		CALL
W300060-S	3 X 6	16.25	1.25	FULL PSI		CALL
W300080-S	3 X 8	18.25	1.25	FULL PSI		CALL
V300080-S	3 X 8	20.25	1.25	FULL PSI		CALL
W300100-S	3 X 10	20.25	1.25	FULL PSI	097981	265.32
W300120-S	3 X 12	22.25	1.25	FULL PSI	097986	280.31
W300140-S	3 X 14	24.25	1.25	FULL PSI	097991	286.08
W300160-S	3 X 16	26.25	1.25	FULL PSI	097996	313.77
V300160-S	3 X 16	31.50	1.5	FULL PSI		CALL
W300180-S	3 X 18	28.25	1.5	FULL PSI	098001	347.22
W300200-S	3 X 20	30.25	1.5	FULL PSI	098006	351.84
W300240-S	3 X 24	34.25	1.5	FULL PSI	098011	377.21
W300300-S	3 X 30	40.25	1.5	12,150 LB / 1,720 PSI*	098016	505.26
W300360-S	3 X 36	46.25	1.5	12,150 LB / 1,720 PSI*	098021	489.39
W350060-S	3.5 X 6	16.25	1.25	FULL PSI		CALL
W350080-S	3.5 X 8	18.25	1.25	FULL PSI		CALL
V350080-S	3.5 X 8	20.25	1.25	FULL PSI		CALL
W350100-S	3.5 X 10	20.25	1.25	FULL PSI	098026	327.61
W350120-S	3.5 X 12	22.25	1.25	FULL PSI	098031	350.68
W350140-S	3.5 X 14	24.25	1.25	FULL PSI	098036	386.44
W350160-S	3.5 X 16	26.25	1.25	17,000 LB / 1,760 PSI*	098041	385.29
V350160-S	3.5 X 16	31.50	1.5	FULL PSI	097841	440.94
W350180-S	3.5 X 18	28.25	1.25	14,000 LB / 1,450 PSI*	098046	404.90
W350200-S	3.5 X 20	30.25	1.5	FULL PSI	098051	330.17
W350240-S	3.5 X 24	34.25	1.5	18,000 LB / 1,870 PSI*	098056	562.94
W350300-S	3.5 X 30	40.25	1.5	12,000 / 1,250 PSI	098061	568.47
W350360-S	3.5 X 36	46.25	1.5	9,000 / 940 PSI		CALL
W400040-S	4.0 X 4	14.25	1.5	FULL PSI		CALL
W400080-S	4.0 X 8	18.25	1.5	FULL PSI		CALL
V400080-S	4.0 X 8	20.25	1.5	FULL PSI		CALL
W400100-S	4.0 X 10	20.25	1.5	FULL PSI	098071	380.67
W400120-S	4.0 X 12	22.25	1.5	FULL PSI	098076	401.44
W400140-S	4.0 X 14	24.25	1.5	FULL PSI	098081	441.81
W400160-S	4.0 X 16	26.25	1.5	FULL PSI	098086	464.88
V400160-S	4.0 X 16	31.50	2	FULL PSI	097846	511.03
W400180-S	4.0 X 18	28.25	1.5	30,000 LB / 2,380 PSI*	098091	486.80
W400200-S	4.0 X 20	30.25	1.5	25,000 LB / 2,150	098096	393.24
W400240-S	4.0 X 24	34.25	2	FULL PSI	098101	605.62
W400300-S	4.0 X 30	40.25	2	FULL PSI	098106	634.10
W400360-S	4.0 X 36	46.25	2	27,000 LB / 2,150 PSI*	098111	805.18

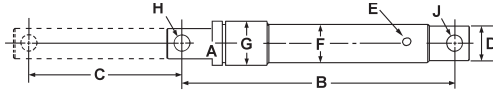
UNIVERSAL SEAL KITS		
PART #	DESCRIPTION	PRICE
PMCK-WW2000	2 BORE	CALL
PMCK-WW2500	2.5 BORE	CALL
PMCK-WW3000	3 BORE	CALL
PMCK-WW3500	3.5 BORE	CALL
PMCK-WW4000	4 BORE	CALL

* These models have a column load restriction that limits the maximum push load that the cylinder can safely operate at.

* NOTE: V models are built to ASAE retract dimensions. The "B" dimension shown in the chart will be 2.00 inches longer for 8.0 inch stroke V models and will be 5.25 inches longer for 16.0 inch stroke V models. Also, Model V300160, V350160, & V400160 will have a 1.25 pin.

BAUM SNOW PLOW CYLINDERS

Single-Acting Displacement Cylinders with Pinhole in Shaft & Butt End



E = 1/4" Female Pipe

Cylinder Part Number	Bore Size Inches	C Stroke Inches	Our Sequence Number	Price Per Piece	Port Size Inches	A Shaft Size Inches	B Pin Center to Center Collapsed Inches	D Butt End Diam. Inches	F Outside Diam. Inches	H-J Fit Pin Size Inches	G Collar Size Inches	Uses Seal Kit Number	Our Sequence Number	Price Per Piece
CS-150-6	1-1/2	x 6	177692	\$192.11	1/4	1-1/2	13	1-3/4	2	3/4	2-3/8	-----		\$....
CS-150-10	1-1/2	x 10	177693	248.47	1/4	1-1/2	17	1-3/4	2	1	2-3/8	-----	
CS-200-6	2	x 6	177694	254.26	1/4	2	13	2-1/4	2-1/2	1	2-7/8	-----	
CS-200-10	2	x 10	177695	350.65	1/4	2	17-1/4	2-1/4	2-1/2	1	2-7/8	-----	
CS-250-10	2-1/2	x 10	177696	392.04	3/8	2-1/2	18	2-3/4	3	1	3-3/8	-----	
CS-300-10	3	x 10	177697	3/8	3	18	3-1/4	3-1/2	1	4	-----	
CS-300-12	3	x 12	177698	3/8	3	20	3-1/4	3-1/2	1	4	-----	

All plows but Meyer take 1" Pin. Use 5/8 x 1 Bronze Bushing to reduce bore for Meyer.

SEAL KITS FOR GLAND END CYLINDERS - Listed on Page M6

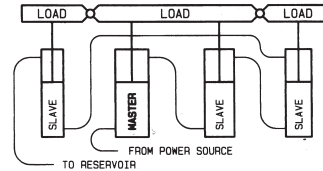
Cylinder Bore Inches	Seal Kit Part Number	Our Sequence Number	Price Per Piece	Cylinder Bore Inches	Seal Kit Part Number	Our Sequence Number	Price Per Piece
2	SK-081100006	EE2260	3-1/2	SK-081700007	EE226036	3.82
2*	SK-1D1153-3	EE21206	12.27	3-1/2*	SK-1D1159-13	EE212085	19.70
2 Hvy	SK-081100005	EE22602	2.48	4*	SK-1D1161-4	EE212078	12.96
2-1/2*	SK-1D1155-3	EE212065	12.44	4	SK-081900006	EE22604	10.08
2-1/2	SK-081300007	EE226025	2.55	4*	SK-1D1161-13	EE212079	20.02
2-1/2	SK-081300005	EE226026	3.22	4	SK-081900005	EE226045	4.85
3	SK-081500004	EE22603	2.66	4+	SK-081900232	EE22606	12.78
3*	SK-1D1157-13	EE21207	11.80	5	SK-1D1165-4	EE212089	21.87
3	SK-081500007	EE226032	3.50	5	SK-082100004	EE22605	5.55
3*	SK-1D1157-22	EE21208	18.86	5	SK-1D1165-15	EE22607	6.22
3-1/2	SK-081700008	EE226035	2.97	5	SK-082100003	EE21209	30.44
3-1/2*	SK-1D1159-4	EE212075	12.64				

* Fits Cross Cylinders

REPHASING CYLINDERS

M5

DR cylinders in an internal bypass for synchronizing rephasing cylinders in a series circuit. All cylinders are plumbed in a series as show in the sample system. Bores and rod diameters are volumetrically matched so that all cylinders rods move equally when stroked. At the end of each stroke, the system is resynchronized through the internal bypass in each cylinder.



DR SERIES

Model	Bore Dia (Inch)	Stroke (Inch)	Closed Ctr Lgth (Inch)	Rod Dia. (Inch)	Port Size (Inch)	Clevis Pin Dia. (Inch)	Weight (LBS.)	Sequence #	Price
308DR	3	8	20 1/4	1 1/4	3/4-16	1	24	103964	\$417.00
32508DR	3 1/4	8	20 1/4	1 1/4	3/4-16	1	27	103962	517.11
3508DR	3 1/2	8	20 1/4	1 1/4	3/4-16	1	30	103960	517.11
37508DR	3 3/4	8	20 1/4	1 3/8	3/4-16	1	34	103958	766.31
408DR	4	8	20 1/4	1 3/8	3/4-16	1	37	103956	703.44
42508DR	4 1/4	8	20 1/4	1 3/8	3/4-16	1 1/4	45	CALL	0.00
4508DR	4 1/2	8	20 1/4	1 1/2	3/4-16	1 1/4	52	CALL	0.00
47508DR	4 3/4	8	20 1/4	1 1/2	3/4-16	1 1/4	59	CALL	0.00
508DR	5	8	20 1/4	1 1/2	3/4-16	1 1/4	66	103950	632.74

FEATURES:

- * 2500 psi working pressure (4000 psi max shock)
- * Precision skived and burnished barrel for long seal life
- * Hardened chrome plated rods resists damage and rust
- * Double lipped polyurethane rod seal for less leakage
- * Clevis mounting
- * Ports in line with pins on DR

PRINCE STROKE CONTROL ASSEMBLIES



PMSC-1 & PMSC-8

THREE-SLEEVE STROKE CONTROL ASSEMBLY

Practical, efficient and easily adapted to Prince Standard Series Cylinders. Positive stroke control adjustment. Open 5-5/8" Closed 2-1/2"

PMSC-1 Adapting Sleeve Thread size 1"-14 and will accept shaft size thru 1-1/8" diameter. Will fit model: 8408.

PMSC-8 Adapting Sleeve Thread size 1-1/8"-12 and will accept shaft size thru 1-3/8" diameter. Will fit models: 9108, 9208, 9308A, 7008, 7108, 7208A, 9208, 9008, 32008, 32508, 33008, 33508, 42008, 42508, & 43008.

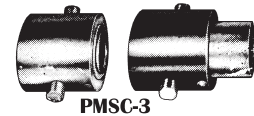
CONCERNING CYLINDER WARRANTY - If you have a cylinder warranty question or a possible defective part, please call us first! Depending on which part is defective and which manufacturer, each situation is handled differently. Generally the complete cylinder will have to be inspected by factory engineers.

Again, please call first. - NOTE: Misalignment or binding causes most cylinder shafts to bend or break, therefore cylinder manufacturers do not warranty their shafts.

TWO-SLEEVE STROKE CONTROL ASSEMBLY

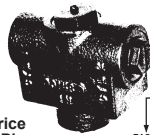
Open 3-1/2" Closed 2-5/16"

PMSC-3 Adapting Sleeve Thread size 1-1/2"-12 and will accept 1-1/2" shaft size. Will fit models: 8608 and 43508.

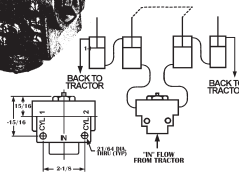


Part Number	Thread Size	Wt. Lbs.	Our Sequence Number	Price Per Piece
PMSC-1	1	3	731584	\$54.99
PMSC-3	1-1/2	3	731648	183.95
PMSC-8	1-1/8	3	731712	319.92
PMSC-11	1-5/16	3	731711	166.89

PRINCE STROKE CONTROL VALVE



Number	For	Our Sequence #	Price Per Piece
PM-SC-10	3/4" O-Ring	731750	\$222.93



NEW "WHOA" ALUMINUM STROKE CONTROL SEGMENTS

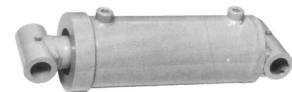
98 & 99 have 7/8, 1, 1-1/4, & 1-1/2 inch Segments
96 & 97 have 1, 1-1/2, 2, & 4-1/4 inch Segments



Number	Shaft Size	Wt. Lbs.	Our Sequence #	Price Per Piece
98/99	1-1/8 thru 1-1/2	1-1/3	575693	\$47.48
96/97	1-3/4 thru 2	4	575701	107.19

PRINCE WELDED CYLINDER

Max. Pressure - 3000 PSI
3/4" Work Ports All with 1-1/2" Pinholes

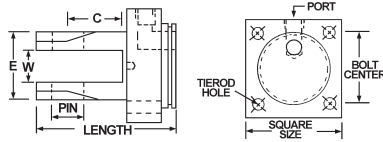


Size Inches Bore x Stroke	Wt. Lbs.	Prince Weld-A-Cylinder Number	Shaft Diam. Inches	Overall Length Retracted Inches	Our Sequence Number	Price Per Piece
5 x 8	75	21008	2-1/2	19	103756	\$760.05
5 x 12	85	21012	2-1/2	23	103755	859.63
5 x 16	90	21016	2-1/2	27	103754	899.41
5 x 20	105	21020	2-1/2	31	103753	1076.32
5 x 24	115	21024	2-1/2	35	103752	1031.19
5 x 36	145	21036	2-1/2	47	103751	1351.83
6 x 8	100	22008	3	19	103750	1248.31
6 x 12	110	22012	3	23	103749	1322.77
6 x 16	125	22016	3	27	103748	1118.40
6 x 24	150	22024	3	35	103747	1208.65
6 x 30	170	22030	3	41	103746	1413.47
6 x 36	190	22036	3	47	103745	1424.77

M6

REPAIR PARTS FOR CROSS and PRINCE

BASE END OR BUTT END FOR TIE-ROD CYLINDERS



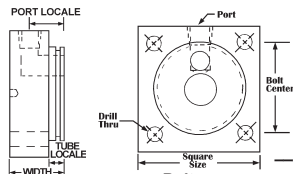
Cylinder Bore Inches	Square Size Inches	Over All Lgth. Inches	C Throat Depth	W Throat Width	Tie-Rod Hole *** Diam.	E Clevis Ear Inches	Bolt Center Inches	Pin Hole Inches	PIPE THREAD			ORING THREAD				
									Base End Part Number	Pipe Port	Our Sequence Number	Price Per Piece	Base End Part Number	O-Ring Port	Our Sequence Number	Price Per Piece
2*	3	4.3	1.7	1.1	3/8D	2.6	2.2	1.0	1D1503-3	1/2	729728	\$45.99	1411005SF	3/4	733770	\$58.65
2 Hvy	3-3/8	4.5	1.8	1.1	1/2T	2.4	2.5	1.0	141100001	1/2	733660	109.31	141100023	3/4	733771	40.67
2-1/2	3-3/8	4.5	1.8	1.1	1/2T	2.4	2.5	1.0	141300001	1/2	733680	119.97	1413005SF	3/4	733772	106.64
3*	3-7/8	4.4	1.6	1.1	1/2D	2.7	2.9	1.0	1D1507-4	1/2	729856	83.21				
3	3-7/8	4.5	1.8	1.1	1/2T	2.4	2.8	1.0	141500001	1/2	733696	143.96	1415005SF	3/4	733774	133.30
3*	3-7/8	4.4	1.6	1.1	1/2T	2.4	2.9	1.25	1D1507-13	1/2	731268	87.20				
3-1/2*	4-3/8	4.6	1.6	1.2	9/16D	2.9	3.2	1.0	1D1509-4	1/2	729920	96.74				
3-1/2	4-1/4	5.3	2.1	1.2	1/2T	2.7	3.2	1.0	141700002	1/2	733710	Call	1417005SF	3/4	733777	130.63
3-1/2*	4-3/8	4.6	1.6	1.2	9/16D	2.9	3.2	1.25	1D1509-13	1/2	731270	102.66				
4*	5	5.1	2.0	1.2	5/8D	3.0	3.8	1.0	1D1511-4	1/2	729984	111.24				
4	5	5.3	1.8	1-1/16	5/8T	2.7	3.8	1.0	141900006	1/2	733715	165.29	1419005SF	3/4	733779	Call
4*	5	5.1	2.0	1.2	5/8D	3.0	3.8	1.25	1D1511-13	1/2	731272	115.31				
5*	5-3/4	5.5	2.62	1.312	1/2D	2.7	4.6	1.25	142100001	1/2	733720	Call	142100035	3/4	733780	194.62
5*	5-3/4	5.75	3.25	1.37	3/4D	3.3	4.5	1.25	1D1515-15	3/4	----				
5*	5-3/4	5.75	3.25	1.37	3/4D	3.3	4.5	1.0	----	----	----				

*** D= Drilled T= Tapped

** Prince has 2 same thread ports 90° offset from each other

** Cross has 1 port 90° offset from pinhole

TIE-ROD GLAND OR HEAD END FOR TIE-ROD CYLINDERS



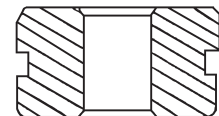
Oring Thread TIE-ROD CYLINDERS also available in 3000 PSI

Cylinder Bore Inches	Rod Diam. Inches	Square Size Inches	Width Inches	Tube Locate	Port Locate	Bolt Center Inches	PIPE THREAD			ORING THREAD				
							Part Number	Pipe Port	Our Sequence Number	Price Per Piece	Base End Part Number	O-Ring Port	Our Sequence Number	Price Per Piece
2	1	2-7/8	2-1/4	1/2	1.1	2.2	081100006	1/2	733475	\$79.05	081100101	3/4	733641	\$39.68
2*	1-1/16	3	2-7/8	1/2	1.3	2.1	1D1153-3	3/8	730048	59.41				
2 Hvy	1-1/8	3-3/8	2-3/8	1/2	1.2	2.5	081100005	1/2	733470	70.12	081100099	3/4	733642	71.98
2-1/2*	1-1/16	3-3/8	1.9	.55	1.25	2.5	1D1155-3	3/8	730112	75.10				
2-1/2	1-1/8	3-3/8	2-3/8	1/2	1.25	2.5	081300007	1/2	733490	72.78	081300146	3/4	733643	90.24
2-1/2	1-1/4	3-3/8	2-3/8	--	--	2.5	081300005	1/2	733480	113.84	081300145	3/4	733644	77.85
3	1-1/8	3-7/8	1-15/16	1/2	1.2	2.5	081500004	1/2	733504	71.58	081500230	3/4	733645
3*	1-1/4	3-7/8	2.15	.55	1.4	2.8	1D1157-13	1/2	730176	90.40				
3	1-3/8	3-7/8	1-15/16	1/2	1.25	2.8	081500007	1/2	733530	90.51	081500227	3/4	733646	77.71
3*	1-1/2	3-7/8	2.15	.55	1.4	2.8	1D1157-22	1/2	730178	81.59				
3-1/2	1-1/8	4-1/4	1-13/16	1/2	1.2	3.2	081700008	1/2	733568	251.67	081700182	3/4	733647	48.75
3-1/2*	1-1/4	4-3/8	2.2	.55	1.4	3.2	1D1159-4	1/2	730240	100.02				
3-1/2	1-3/8	4-1/4	1-13/16	1/2	1.2	3.2	081700007	1/2	733540	173.29	081700178	3/4	733648	107.44
3-1/2*	1-1/2	4-3/8	2.2	.55	1.4	3.2	1D1159-13	1/2	731278	101.65				
4*	1-1/4	5	2	.57	1.4	3.75	1D1161-4	1/2	730304	122.90				
4	1-1/2	5	1-13/16	5/8	1.4	3.8	081900006	1/2	733632	114.10	081900231	3/4	733649	148.10
4*	1-1/2	5	1-13/16	5/8	1.4	3.8	1D1161-13	1/2	730330	123.67	081900232	3/4	733639	314.59
4	1-3/4	5	1-13/16	5/8	1.4	3.8	081900005	1/2	733620	215.95	081900230	3/4	733650
5*	1-1/2	6	--	.68	1.5	4.5	1D1165-4	1/2	731282	153.21				
5	1-3/4	5-3/4	--	--	--	4.5	082100004	3/4	----				
5*	2	6	2-1/2	.56	1.4	4.5	1D1165-15	1/2	731284	139.33				
5	2	5-3/4	2-1/2	9/16	1-5/8	4.5	082100003	3/4	733640	139.57	082100183	7/8	733651	142.10

Seal kits listed on page M4

PISTONS FOR CYLINDERS

Cylinder Bore Inches	Inner Diam. Ins.	Width Inches	Inset Inches	PISTON			SEAL KIT		
				Piston Part Number	Our Sequence Number	Price Per Piece	Seal Kit Part Number	Our Sequence Number	Price Per Piece
2*	3/4	1	3/8	1D1401-200	729714	\$35.35	SK-1D1401-200	EE2120	\$4.66
2	3/4	1	--	071100004	733390	47.59	SK-071100004	EE2255	4.59
2-1/2*	3/4	1	3/8	1D1401-250	729716	39.66	SK-1D1401-250	EE21202	6.77
2-1/2	3/4	1	--	071300004	733392	38.12	SK-071300004	EE22555	6.69
3*	3/4	1	3/8	1D1401-300	729718	47.04	SK-1D1401-300	EE21203	9.27
3	3/4	1	--	071500003	733394	31.19	SK-071500003	EE2256	9.19
3-1/2	3/4	1	--	071700005	733396	90.64	SK-071700005	EE22565	10.48
3-1/2	7/8	1	--	071700184	733397	77.85	SK-071700184	EE22567	10.52
3-1/2*	1	1	3/8	1D1401-350	729720	64.66	SK-1D1401-350	EE21201	10.55
4*	1	1	3/8	1D1401-400	729722	72.04	SK-1D1401-400	EE21204	8.02
4	1	1-1/16	--	071900006	733398	79.58	SK-071900006	EE2257	7.98
5*	1-1/4	1-3/4	3/4	1D1401-500	729724	82.78	SK-1D1401-500	EE21205	26.88
5	1-1/4	1-1/16	--	072100002	733399	117.84	SK-072100002	EE2258	26.89



* Fits Cross Tie-Rod Cylinders

ASK FOR QUANTITY DISCOUNT Prices subject to change without notice.

BAUM HYDRAULICS CORPORATION

1-800-228-9222 / e-mail: sales@baumhydraulics.com

Fax: 1-800-832-2522 / www.baumhydraulics.com / © Baum Hydraulics Corporation

SHAFTS FOR CROSS AND RUGBY TIE-ROD CYLINDERS

M7

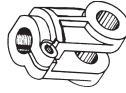
SHAFTS FOR CROSS AND RUGBY TIE-ROD CYLINDERS

Cross Part Number	Shaft Diam.	For Cylinder Diameter	Piston End Diam., Thd.	Clevis End Diam., Thd.	Length Inches	Our Sequence Number	Price Per Piece
1D0203-1475	1-1/16	2 & 2-1/2 x 8" DB	3/4-16	1-1/16-12	14-3/4	730368	\$103.21
1D0219-1475	1-1/4	3 x 8" DB	3/4-16	1-1/4-12	14-3/4	730752	135.40
1D0220-1488	1-1/4	4 x 8" DB	1-14	1-1/4-12	14-3/4	730816	126.35
1D0209-1412	1-1/2	5 x 8" DB	1-1/4-12	1-1/4-12	14-1/8	730624	151.34
1D0215-1462	1-1/4	3508" with & without stop	1-14	1-1/4-12	14-3/4	730688	130.38
1D0219-1475	1-1/4	308" with & without stop	3/4-16	1-1/4-12	14-3/4	730752	135.40
1D0220-1488	1-1/4	408" with & without stop	1-14	1-1/4-12	14-3/4	730816	126.35



SHAFT CLEVIS FOR CROSS CYLINDERS

Choose your clevis by the thread size and pinhole diameter. All clevis here are the split type and made of ductile iron.



Clearance Thread Size	Overall Pinhole Diameter	Throat Between Ears	Clevis Width Inches	Clearance Inches	Part Number	Our Sequence Number	Price Per Piece
1-1/16-12	1	1.1	2.6	2.5	1D1003-3	730880	\$52.09
1-1/4-12	1	1.2	2.7	2.12	1D1003-5	731008	54.09
1-1/4-12	1-1/4	1.2	2.7	2.5	1D1014-12	731020	60.99

CYLINDER CLEVIS PINS



Clevis Pin Part Number	Size-Diam. & Useable Lgth.	Fits Cylinder Size	Our Sequence Number	Price Per Piece
1017C	w/o hole 1 x 2-1/8	2 thru 3-1/2	185864	\$3.65
1022C	w/o hole 1 x 2-3/4	2 thru 3-1/2	185868	7.68
10-X	Replacement Clip for Above Clevis Pins		602655	0.83

SEAL KITS FOR CROSS & LANTEX TIE-ROD CYLINDERS

Specify Bore, Diameter, Stroke, Shaft Size & whether depth control, or standard double-acting.

Each seal kit consists of: 3 piston and static seals, 2 shaft seals, 1 piston gasket and 1 wiper.

DA/DB = Double Acting Tie Rod **DC = Hyd. Depth Control** **DR = Rephasing Cylinder**
DE = Mechanical Depth Control **DCR = Hyd. Depth Control for Rephasing Cylinder**



Part Number	Shaft Diam.	Cylinder Diameter	Our Sequence Number	Price Per Piece
1C4642	3/4	1-1/2 DB	EE1815	\$19.15
1C4244	1-1/16	2 DA	EE1710	19.67
1C4623	1-1/8	2 DB	EE1735	27.02
1C4433	1-1/16	2-1/2 DA	EE1725	21.02
3C4385	1-1/8	2-1/2 DB	EE1875	28.74
1C4982	1-1/4	2-1/2 DB	EE1835	20.09
1C4434	1-1/16	3 DB	EE1730	23.75
1C4147	1-1/8	3 DB	EE1705	31.10
1C4630	1-1/2	3 DB	EE1795	30.25
1C4629	1-1/4	3 DB & DE	EE1790	22.82
3C8706	1-1/4	3 DR & DCR	EE19146	47.37
3C7681	1-1/4	3 DC	EE1900	38.33
3C8704	1-1/4	3-1/4 DR	EE19144	43.41
3C8702	1-1/4	3-1/2 DR & DCR	EE19142	51.35
1C4429	1-1/4	3-1/2 DB & DE	EE1715	29.01
1C4631	1-1/2	3-1/2 DA	EE1800	36.07
3C7682	1-1/4	3-1/2 DC	EE1903	45.23
3C7683	1-1/2	3-1/2 DC	EE1905	52.29
3C5781	1-3/4	3-1/2 DC	EE1906	48.68
3C8703	1-3/8	3-3/4 DR	EE19143	112.13
1C4430	1-1/4	4 DB & DE	EE1720	30.16
1C4637	1-1/2	4 DB & DE	EE1805	32.52
3C7060	1-1/2	4 DC	EE1908	50.08
1C4638	2	4 DB	EE1810	41.08
3C7308	1-1/4	4 DC	EE1907	43.02
3C7684	1-3/4	4 DC	EE1910	46.48
3C8698	1-3/8	4 DR & DCR	EE19131	102.37
3C8613	2	4 DC	EE1913	58.65
3C8705	1-3/8	4-1/4 DR	EE19145	97.11
3C8701	1-1/2	4-1/2 DR & DCR	EE19141	74.76
3C8721	1-1/2	4-1/2 DC	EE1915	76.90
3C8614	1-3/4	4-1/2 DC	EE1912	73.30
3C8714	2	4-1/2 DC	EE1916	85.47
3C8700	1-1/2	4-3/4 DR	EE1914	87.92
1C4654	1-1/2	5 DB	EE1820	57.04
3C8722	1-1/2	5 DC	EE1918	95.78
3C8723	1-3/4	5 DC	EE1919	92.17
3C8699	1-1/2	5 DR & DCR	EE19132	92.08
1C4655	2	5 DB	EE1825	65.61
3C8612	2	5 DC	EE1920	104.35
3C7810DC	POPPET ASSEMBLY		EE1922	1.84

ROD WIPER ONLY FOR CROSS

Part Number	Shaft Diam.	Cylinder Diameter	Our Sequence Number	Price Per Piece
AR0913-E0	3/4		793078	\$7.73
AR1491-E0	1-1/16		793126	5.27
AR1598-E0	1-1/8		793142	9.77
AR1818-F0	1-1/4		793150	4.79
AR2269-F0	1-1/2		793190	8.84
AR6868-E0	1-3/4		793244	5.44
AR2912-F0	2		793212	12.15

SEAL KITS FOR LANTEX TIE-ROD CYLINDERS

Part Number	Shaft Diam.	Cylinder Diameter	Our Sequence Number	Price Per Piece
3104-34	1-1/8	2	EE2130	\$13.95
3105-34	1-1/8	2-1/2	EE2131	3.92
3106-34	1-1/4	2-1/2	EE2132	6.92
3107-34	1-1/4	3	EE2133	7.99
3108-34	1-1/2	3	EE2134	8.30
3109-34	1-1/4	3-1/2	EE2135	10.39
3110-34	1-1/2	3-1/2	EE2136	10.30
3111-34	1-1/2	4	EE2137	8.81
3112-34	1-3/4	4	EE2138	11.76
3113-34	1-3/4	5	EE2139	20.07

SEAL KITS FOR MONARCH RED LION TIE-ROD CYLINDERS MADE IN CANADA

Kit Number	Bore Size	Rod Diam.	Our Sequence Number	Per Each	Rod Wiper	Piston Seal	Rod Seal
492901	2.0	1.12	G08300	\$17.23	MC	OR2B	OR1B
492903	2.5	1.12	G08305	17.05	MC	OR2B	OR1B
492905	2.5	1.25	G08310	19.75	MC	OR2B	OR1B
492907	3.0	1.25	G08315	10.68	MC	OR2B	OR1B
492909	3.0	1.5	G08320	21.57	MC	OR2B	OR1B
492911	3.5	1.25	G08325	23.00	MC	OR2B	OR1B
492913	3.5	1.5	G08330	22.39	MC	OR2B	OR1B
492915	4.0	1.25	G08335	29.08	MC	OR2B	OR1B
492917	4.0	1.5	G08340	25.49	MC	OR2B	OR1B
492919	4.0	1.75	G08345	20.24	MC	OR2B	OR1B
492921	4.0	2.0	G08350	41.36	MC	OR2B	OR1B

TOP LINK CYLINDER Category II only - 1" Swivel Pinhole - 1/2" NPT Ports

Size Inches Bore x Stroke	PSI	Prinse Weld-A-Cylinder Number	Shaft Diam. Inches	Overall Length Retracted Inches	Our Sequence Number	Per Each
3 x 10	3000	BD-0228	1-3/8	20-7/8	104075	\$512.29



SHAFTS FOR PRINCE TIE-ROD CYLINDERS

SHAFTS FOR PRINCE TIE-ROD CYLINDERS

Prince Part Number	Shaft Diam.	For Cylinder Diameter	Piston End Diam., Thd.	Clevis End Diam., Thd.	Length Inches	Our Sequence Number	Price Per Piece
010400008	1	2 x 8"	3/4-16	1-14	15-1/2	733350	\$66.65
010500005	1-1/8	2-1/2 x 8", 3 x 8", 3-1/2 x 8"	3/4-16	1-1/8-12	15-1/2	733376	73.98
010717750A		3 x 12"				733377
010729750A	1-3/8	3 x 24"	1-14	1-1/8-12	29-3/4	7333805	224.21
010800005	1-1/2	4 x 8"	1-14	1-1/2-12	15-1/2	733381	130.63



SHAFT CLEVIS FOR PRINCE CYLINDERS

Choose your clevis by the thread size and pinhole diameter. All clevis here are the split type and made of ductile iron.



Thread Size	Pinhole Diameter	C Clearance Between Ears	W Overall Width Inches	T Throat Clearance Inches	Clevis Part Number	Our Sequence Number	Price Per Piece
7/8-14	1	1.1	2.5	2.1	100000451	732940	\$71.98
1-14	1	1.1	2.5	2.1	100000425	732800	53.32
1-1/8-12	1	1.1	2.5	2.0	100000423	732864	45.32
1-1/2-12	1	1.1	2.9	2.1	100000326	732992	114.64
1-1/2-12	1-1/4	1.1	2.9	2.3	100000362	732928	114.64

CYLINDER CLEVIS PINS



Clevis Pin Part Number	Size-Diam. & Useable Lgth.	Fits Cylinder Size	Our Sequence Number	Price Per Piece
190400004	1 x 3-3/16	4, 5 bushed	733120
190600016	1-1/4 x 4	5 cylinder	733184	95.98

CLIPS FOR CLEVIS PINS



Clevis Pin Part Number	Use Clip Number	Our Sequence Number	Price Per Piece
*1904K0004	10-X	602655	\$266.60
190600016	190600003	733312	10.66

*Comes with Pin & Cotter



SEAL KITS FOR PRINCE TIE-ROD CYLINDERS

Specify Bore, Diameter, Stroke, Shaft Size & whether standard double-acting (DA) or single-acting (SA). Each seal kit contains a complete set of back-up washers, O-Rings and wiper.

Part Number	Shaft Diam.	Cylinder Diam.	Cylinder Style	Our Sequence Number	Price Per Piece
PMCK-3300	1	2	Welded	EE22464	\$10.41
PMCK-5400	1-3/8	2-1/2	Welded	EE22467	30.61
PMCK-3400	1-1/8	3	Welded	EE22465	20.55
PMCK-5500	1-1/2	3-1/2	Welded	EE22468	56.28
PMCK-8300	1-1/2	3	Welded	EE22475	38.88
PMCK-5600	2	4	Welded	EE22469	78.51
PMCK-7000	1-1/8	2-1/2	Tie-Rod	EE22471	13.12
PMCK-7100	1-1/8	3	Tie-Rod	EE22472	15.57
PMCK-7200	1-1/8	3-1/2	Tie-Rod	EE22473	18.16
PMCK-8400	1	2	Tie-Rod	EE22476	12.43
PMCK-8600	1-1/2	4	Tie-Rod	EE22477	19.57
PMCK-9000	1-1/8	2	Tie-Rod	EE22478	11.99
PMCK-9100	1-1/4	2-1/2	Tie-Rod	EE22479	14.13
PMCK-9200	1-3/8	3	Tie-Rod	EE22481	17.35
PMCK-9300	1-3/8	3-1/2	Tie-Rod	EE22482	20.05
PMCK-9400	1-3/4	4	Tie-Rod	EE22483	21.28
PMCK-8200	1-3/4	5	Tie-Rod	EE22474	39.49
PMCK-9500	2	5	Tie-Rod	EE22484	44.34
PMCK-9700	2	4	Tie-Rod	EE22485	32.29
PMCK-9900	2-1/2	5	Tie-Rod	EE22509	78.67
PMCK-15208	1-3/8	4	Tie-Rod	EE22511	8.59
PMCK-17908	1-1/2	4	Hyd-Stop	EE22512	20.70
PMCK-17916	1-3/4	4	Hyd-Stop	EE22513	22.69
PMCK-18608	1-1/4	3	Hyd-Stop	EE22514	18.28
PMCK-18616	1-3/8	3	Hyd-Stop	EE22515	22.91
PMCK-18708	1-1/4	3-1/2	Hyd-Stop	EE22516	19.17
PMCK-18716	1-1/2	3-1/2	Hyd-Stop	EE22517	19.67
PMCK-19400	3/4	1-1/2	Welded	EE22521	18.84
PMCK-19500	1-1/8	2	Welded	EE22522	14.52
PMCK-19600	1-1/4	2-1/2	Welded	EE22523	13.02
PMCK-19700	1-3/8	3	Welded	EE22524	17.60
PMCK-19800	1-1/2	3-1/2	Welded	EE22525	13.92
PMCK-19900	1-3/4	4	Welded	EE22526	19.96
PMCK-21000	2-1/2	5	Hvy Weld	EE2253	88.74
PMCK-22000	3	6	Hvy Weld	EE22535	141.39
PMCK-42000	1-1/8	2	Welded	732694	129.83
PMCK-42500	1-1/4	2-1/2	Welded	7326942	133.30
PMCK-43000	1-3/8	3	Welded	7326943	143.96
PMCK-43500	1-1/2	3-1/2	Welded	732695	107.04
PMCK-44000	1-3/4	4	Welded	732696	175.96

SEAL KITS FOR PRINCE 3000 PSI SAE TIE-ROD CYLINDERS

PMCK-32000	1-1/8	2	Tie-Rod	EE2254	25.34
PMCK-32500	1-1/4	2-1/2	Tie-Rod	EE22541	45.88
PMCK-33000	1-3/8	3	Tie-Rod	EE22542	49.42
PMCK-33500	1-3/8	3-1/2	Tie-Rod	EE22543	49.78
PMCK-34000	1-3/4	4	Tie-Rod	EE22544	60.34
PMCK-35000	2	5	Tie-Rod	EE22545	92.57

PRINCE HYDRAULIC STOP POPPET VALVE ASSEMBLY

180901022	Hydraulic Stop Cylinder	733765	\$170.62
-----------	-------------------------	--------	-----------------



SEAL KITS FOR PRINCE TIE-ROD SLAVE CYLINDERS

Part Number	Shaft Diam.	Cylinder Diam.	Cylinder Style	Our Sequence Number	Price Per Piece
PMCK-AM2532	1-1/2	5	Tie-Rod	732700	\$141.30
PMCK-AM2534	1-1/2	5	Tie-Rod	732716	120.64
PMCK-AM2536	1-1/2	5	Tie-Rod	732732	120.64
PMCK-AM2538	1-1/2	4-3/4	Tie-Rod	732702	181.29
PMCK-AM2540	1-1/2	4-3/4	Tie-Rod	732718	179.69
PMCK-AM2542	1-1/2	4-3/4	Tie-Rod	732734	71.28
PMCK-AM2544	2	4-1/2	Tie-Rod	732704	138.63
PMCK-AM2546	2	4-1/2	Tie-Rod	732720	134.90
PMCK-AM2548	2	4-1/2	Tie-Rod	732736
PMCK-AM2550	1-3/8	4	Tie-Rod	732706	114.64
PMCK-AM2552	1-3/8	4	Tie-Rod	732722	165.29
PMCK-AM2554	1-3/8	4	Tie-Rod	732738	61.66
PMCK-AM2556	1-3/8	3-3/4	Tie-Rod	732708	119.97
PMCK-AM2558	1-3/8	3-3/4	Tie-Rod	732724
PMCK-AM2560	1-3/8	3-3/4	Tie-Rod	732740	104.11
PMCK-AM2562	1-1/4	3-1/2	Tie-Rod	732710	97.98
PMCK-AM2564	1-1/4	3-1/2	Tie-Rod	732726	97.98
PMCK-AM2566	1-1/4	3-1/2	Tie-Rod	732742	81.18
PMCK-AM2568	1-1/4	3-1/4	Tie-Rod	732712	88.78
PMCK-AM2570	1-1/4	3-1/4	Tie-Rod	732728	88.78
PMCK-AM2572	1-1/4	3-1/4	Tie-Rod	732744	97.31
PMCK-AM2574	1-1/4	3	Tie-Rod	732714	111.84
PMCK-AM2576	1-1/4	3	Tie-Rod	732730
PMCK-AM2578	1-1/4	3	Tie-Rod	732746	145.30

SEAL KITS FOR PRINCE TIE-ROD MASTER CYLINDERS with STROKE CONTROL

PMCK-AM2502	1-1/2	5	Tie-Rod	732756	52.91
PMCK-AM2504	1-1/2	5	Tie-Rod	732764	95.24
PMCK-AM2506	1-1/2	5	Tie-Rod	732774	95.24
PMCK-AM2508	1-1/2	4-1/4	Tie-Rod	732754	83.31
PMCK-AM2510	1-1/2	4-1/4	Tie-Rod	732762	88.55
PMCK-AM2512	1-1/2	4-1/4	Tie-Rod	732770	88.50
PMCK-AM2514	1-3/8	4	Tie-Rod	732752
PMCK-AM2516	1-3/8	4	Tie-Rod	732760	69.32
PMCK-AM2518	1-3/8	4	Tie-Rod	732768	86.63
PMCK-AM2520	1-1/4	3-1/2	Tie-Rod	732750	61.65
PMCK-AM2522	1-1/4	3-1/2	Tie-Rod	732758	81.77
PMCK-AM2524	1-1/4	3-1/2	Tie-Rod	732766	81.77

SEAL KITS FOR NEW PRINCE 3,000 PSI TIE-ROD CYLINDERS

PMCK-B200000	1-1/8	2	3,000 Tie-Rod	732780	73.32
PMCK-B250000	1-1/4	2-1/2	3,000 Tie-Rod	732782	88.88
PMCK-B300000	1-3/8	3	3,000 Tie-Rod	732784	183.95
PMCK-B350000	1-3/8	3-1/2	3,000 Tie-Rod	732786	53.32
PMCK-B400000	1-3/4	4	3,000 Tie-Rod	732790	157.29
PMCK-B500000	2	5	3,000 Tie-Rod	732792	130.63