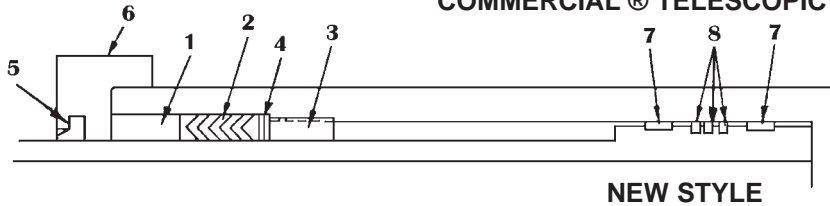


GARBAGE PACKER SEAL KITS FOR NEW STYLE COMMERCIAL® TELESCOPIC CYLINDERS



HOW TO IDENTIFY A COMMERCIAL CYLINDER
 One brass bearing, flat top and bottom, above the packing.
 Threaded internal stop ring. Small wipers.
 Numbers stamped on metal tag.
 Example: **SD85-CC-4-220** Stage outside diameters
 all .750", i.e. 3.750", 4.750", etc.
 Except 7.905" and 9-3/8" uses 5/16" cross section packing

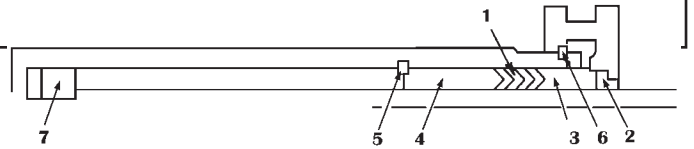
NEW STYLE

Item	Part Number	Our Sequence Number	Per Each	Size	Qty. Req'd	Item	Part Number	Our Sequence Number	Per Each	Size	Qty. Req'd
BEARING RING						PISTON BEARING					
1	CM-275NB	CC0004	\$24.87	2-3/4"	1	7	CM-U3023-32	CC0069	\$6.51	2-3/4"	2
1	CM-375NB	CC0005	24.93	3-3/4"	1	7	CM-U3023-42	CC0070	9.69	3-3/4"	2
1	CM-475NB	CC0010	38.23	4-3/4"	1	7	CM-U3023-52	CC0075	9.79	4-3/4"	2
1	CM-575NB	CC0015	43.96	5-3/4"	1	7	CM-U3023-62	CC0080	11.07	5-3/4"	2
1	CM-675NB	CC0020	46.16	6-3/4"	1	7	CM-U3023-72	CC0085	12.70	6-3/4"	2
1	CM-790NB	CC0025	69.59	7.905"	1	7	CM-U3023-84	CC0090	15.02	7.905"	2
1	CM-937NB	CC0030	151.22	9-3/8"	1	7	CM-U3023-98	CC0095	30.46	9-3/8"	2
VEE SETS WITH WIPERS						PISTON RING					
2	CM-D4009W	CC0057	36.20	2-3/4"	1	8	CM-X78-4-25	CC0035	16.08	3-3/4"	3
2	CM-D3009W	CC0058	46.86	3-3/4"	1	8	CM-X78-5-25	CC0040	21.15	4-3/4"	3
2	CM-D6009W	CC0059	58.58	4-3/4"	1	8	CM-X78-6-25	CC0045	24.96	5-3/4"	3
2	CM-D5009W	CC0060	74.63	5-3/4"	1	8	CM-X78-7-25	CC0050	36.97	6-3/4"	3
2	CM-D7009W	CC0061	108.38	6-3/4"	1	8	CM-X78-8-437	CC0055	51.35	7.905"	3
2	CM-D8009W	CC0062	115.28	7.905"	1	8	CM-X78-9-88	CC0056	108.28	9-3/8"	3
2	CM-D9009W	CC0064	238.03	9-3/8"	1	BLEEDER					
						--	CM-X29-1	CC0099	7.30	--	1
WIPER RING						VEE PACKING & WIPER KIT					
5	CM-Y3026-27	482546	5.70	2-3/4"	1	Part Number	Our Sequence Number	Per Each	Kit Contains		
5	CM-Y3026-37	482548	7.06	3-3/4"	1	CM-46	CC0101	\$165.72	1 Ea: 3-3/4" thru 5-3/4"		
5	CM-Y3026-47	482550	13.95	4-3/4"	1	CM-48	CC0100	371.65	1 Ea: 3-3/4" thru 7.905"		
5	CM-Y3026-57	482552	9.57	5-3/4"	1	CM-58	CC0105	329.85	1 Ea: 4-3/4" thru 7.905"		
5	CM-Y3026-67	482554	10.37	6-3/4"	1						
5	CM-Y3026-79	482556	11.96	7.905"	1						
5	CM-Y3026-93	482558	14.81	9-3/8"	1						

HOW TO IDENTIFY COMMERCIAL TELESCOPIC CYLINDERS AND CHOOSE THE CORRECT SEAL KITS

STEP 1. DETERMINE IF YOUR CYLINDER IS DOUBLE-ACTING OR SINGLE-ACTING.
 Double-acting cylinders have (2) two ports on the plunger end. The larger port is for extending the cylinder; the smaller port is for retracting the cylinder.
 Single-acting cylinders have only (1) one port located on the main (or base end).

STEP 2. DETERMINE WHICH SECTION OF THE CYLINDER YOU NEED PARTS OR REPAIRS FOR.
 The **MAIN** (or base end) is the largest diameter section of your cylinder. The **PLUNGER** (or shaft end) is the smallest diameter section of your cylinder.
 All other sections are called **STAGES** or **INTERMEDIATE STAGES**.

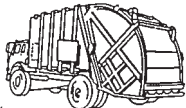


ANTHONY® REPLACEMENT PARTS

Item	Part Number	Our Sequence Number	Per Each	Size	Qty. Req'd	Item	Part Number	Our Sequence Number	Per Each	Size	Qty. Req'd
PACKING ASSEMBLY						BOTTOM PACKING RETAINER					
1	ANY-S108006W	M07002	\$9.74	2-1/2"	1	4	ANY-S107024	CC5400	\$284.36	4-1/2"	1
	ANY-S108005W	M07003	9.55	3-1/2"	1		ANY-S107023	CC5405	235.64	5-1/2"	1
	ANY-S108004W	M07004	11.41	4-1/2"	1		ANY-S107022	CC5410	259.34	6-1/2"	1
WIPER RING						SNAP RING FOR BOTTOM BEARING					
2	ANY-S108016	CC5415	2.98	2-1/2"	1	5	ANY-S084005	CC5365	7.96	3" I.D.	1
	ANY-S108015	CC5420	0.00	3-1/2"	1		ANY-S084017	CC5370	69.17	4" I.D.	1
	ANY-S108014	CC5425	0.00	4-1/2"	1		ANY-S084018	CC5375	69.17	5" I.D.	1
TOP PACKING RETAINER						EXTERNAL SNAP RING					
3	ANY-S107076	CC5440	52.61	2-1/2"	1	6	ANY-S084012	CC5340	15.19	3-1/2" O.D.	1
BOTTOM PACKING RETAINER						SPLIT BRONZE PISTON BEARING					
4	ANY-S107026	CC5390	70.72	2-1/2"	1	7	ANY-H037062	CC5315	74.48	2-1/2"	1
	ANY-S107024	CC5400	284.36	4-1/2"	1						
	ANY-S107023	CC5405	235.64	5-1/2"	1						
	ANY-S107022	CC5410	259.34	6-1/2"	1						

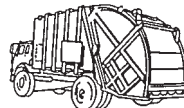
REPLACEMENT KITS FOR GARWOOD® EQUIPMENT

Part Number	Our Sequence Number	Per Each	Description	Part Number	Our Sequence Number	Per Each	Description
GW-2064753K	MM1214	\$45.72	Dump Truck Cylinder	GW-2074132K	CH2040	\$75.50	3-1/2" Rod x 5" Bore
GW-2064755K	MM1218	66.74	Garbage Packer Ejector	GW-2074169K	CH2000	243.91	Ejector Cylinder



SEAL KITS FOR DITCH WITCH®

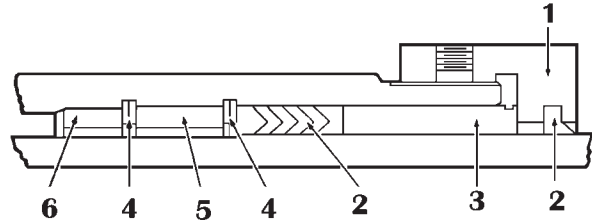
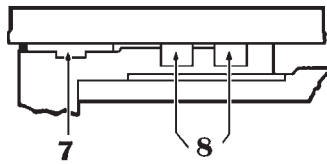
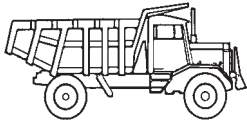
Part Number	Our Sequence Number	Per Each
190-158	G02520	\$9.93
190-153	G02510	9.88



SEAL KITS FOR TOYOTA®

Part Number	Our Sequence Number	Per Each
TOY-04651-10334-71	CH1554	\$140.91
TOY-04651-20142-71	CH1550	140.76

**DUMP TRUCK & GARBAGE PACKER SEAL KITS FOR
CUSTOM HOIST® SINGLE & DOUBLE ACTING TELESCOPIC CYLINDERS**



Item	Part Number	Our Sequence Number	Per Each	Size	Qty. Req'd
HEAD NUT					
1	CH-2HN-4	CC3965	\$105.00	4"	1
1	CH-2HN-5	CC3970	107.99	5"	1
1	CH-2HN-6	CC3975	142.87	6"	1
1	CH-2HN-7	CC3980	148.95	7"	1
1	CH-2HN-8	CC3985	179.22	8"	1
1	CH-2HN-9	CC3990	245.79	9"	1
1	CH-2HN-106	CC3995	366.02	10-5/8"	1

NOTE: Custom Hoist Head Nuts are measured at the threads

Item	Part Number	Our Sequence Number	Per Each	Size	Qty. Req'd
PACKING & WIPER ASSEMBLY					
2	CH-3VSW	MM05596	8.52	3"	1
2	CH-4VSW	MM05597	12.29	4"	1
2	CH-5VSW	MM05598	15.09	5"	1
2	CH-6VSW	MM05599	18.46	6"	1
2	CH-7VSW	MM055962	21.11	7"	1
2	CH-8VSW	MM055974	25.88	8"	1
2	CH-825VSW	CC3700	154.14	8-1/4"	1
2	CH-912VSW	CC3695	222.72	9-1/8"	1

Item	Part Number	Our Sequence Number	Per Each	Size	Qty. Req'd
NYLON BOTTOM BEARING					
3	CH-1BU195-3	CC4041	22.79	3"	1
3	CH-1BU195-4	CC4042	23.41	4"	1
3	CH-1BU195-5	CC4043	25.49	5"	1
3	CH-1BU195-6	CC4044	27.42	6"	1
3	CH-1BU195-7	CC4045	31.09	7"	1
3	CH-1BU195-8	CC4046	36.44	8"	1
3	CH-1BU195-825	CC4047	85.09	8-1/4"	1
3	CH-1BU195-91	CC4048	55.54	9-1/8"	1

Item	Part Number	Our Sequence Number	Per Each	Size	Qty. Req'd
RETAINER RING					
4	CH-1RR1-45	MM055931	6.23	4-1/2"	2
4	CH-1RR1-55	MM055932	6.84	5-1/2"	2
4	CH-1RR1-65	CC3940	11.00	6-1/2"	2
4	CH-1RR1-75	CC3945	14.56	7-1/2"	2
4	CH-1RR1-85	CC3950	18.04	8-1/2"	2
4	CH-1RR1-9	CC3960	103.36	9"	2
4	CH-1RR1-97	CC3955	117.73	9-3/4"	2

Item	Part Number	Our Sequence Number	Per Each	Size	Qty. Req'd
NYLON TOP BEARING					
5	CH-1BU11-3	MM05591	\$15.16	3"	1
5	CH-1BU11-4	MM055911	15.16	4"	1
5	CH-1BU11-5	MM055912	15.97	5"	1
5	CH-1BU11-6	MM055913	18.88	6"	1
5	CH-1BU11-7	MM055914	20.55	7"	1
5	CH-1BU11-91	CC4035	67.28	9-1/8"	1

NOTE: Except for the 9-1/8" spacer, our replacement spacers are the same as item No. 3, made of nylon. These are interchangeable plus give additional bearing area **Steel Spacers** are available.

Item	Part Number	Our Sequence Number	Per Each	Size	Qty. Req'd
PLUNGER STOP					
6	CH-PS1-3	CC3880	48.44	3"	1
6	CH-PS1-4	CC3885	108.62	4"	1
6	CH-PS1-5	CC3890	116.02	5"	1
6	CH-PS1-6	CC3895	110.70	6"	1
6	CH-PS1-7	CC3900	82.03	7"	1
6	CH-PS1-8	CC3905	72.02	8"	1
6	CH-PS1-82	CC3910	126.40	8-1/4"	1
6	CH-PS1-91	CC3915	138.34	9-1/8"	1

Item	Part Number	Our Sequence Number	Per Each	Size	Qty. Req'd
GUIDE RING					
7	CH-2GR6-3	CC3845	10.88	3"	1
7	CH-2GR6-4	CC3850	11.73	4"	1
7	CH-2GR6-5	CC3855	14.98	5"	1
7	CH-2GR6-6	CC3860	18.56	6"	1
7	CH-2GR6-7	CC3865	20.19	7"	1
7	CH-2GR6-8	CC3870	33.30	8"	1
7	CH-2GR6-91	CC3875	47.58	9-1/8"	1

Item	Part Number	Our Sequence Number	Per Each	Size	Qty. Req'd
PISTON RING					
8	CH-2PR3-75	CC3830	39.02	7-1/2"	2
8	CH-2PR3-85	CC3835	52.56	8-1/2"	2
8	CH-2PR3-97	CC3840	108.18	9-3/4"	2

ITEM 8 FOR DOUBLE ACTING ONLY

MISCELLANEOUS ITEMS - ONE EACH REQUIRED

Part Number	Our Sequence Number	Per Each	Description
CH-SS-3-1	CC3660	\$1.76	Set Screw for Head Nut
HY-A20420	CC1145	0.90	Nylon Slug for Head Nut

Kit Number	Sequence #	Each	Kit Contains
CH-46	MM055963	\$44.85	1 each 4"-6"
CH-47	MM055964	64.77	1 each 4"-7"
CH-48	MM055965	89.74	1 each 4"-8"
CH-48-1/4	CC3780	323.68	1 each 4"-8-1/4"
CH-49	CC3785	454.29	1 each 4"-9-1/8"
CH-57	MM055967	53.47	1 each 5"-7"
CH-58	MM055968	77.84	1 each 5"-8"

Part Number	Our Sequence Number	Per Each	Description
NYLON BEARING KITS			
CH-NYB46-SA	MM055901	50.01	1 each 4"-6"
CH-NYB47-SA	MM055902	70.56	1 each 4"-7"
CH-NYB48-SA	MM055903	95.45	1 each 4"-8"
CH-NYB57-SA	MM055904	55.40	1 each 5"-7"
CH-NYB48-DA	MM055906	188.41	1 each 4"-8"

Part Number	Our Sequence Number	Per Each	Kit Contains
DUAL LIP WIPERS			
HYDL-3	482658	\$6.09	3" Dual Lip Wiper
HYDL-4	482660	7.70	4" Dual Lip Wiper
HYDL-5	482662	9.31	5" Dual Lip Wiper
HYDL-6	482664	10.68	6" Dual Lip Wiper
HYDL-7	482666	11.10	7" Dual Lip Wiper
HYDL-8	482668	13.37	8" Dual Lip Wiper
HYDL-8-12	482670	14.26	8-1/8" Dual Lip Wiper
HYDL-8-25	482672	17.24	8-1/4" Dual Lip Wiper
HYDL-9	482674	17.84	9" Dual Lip Wiper
HYDL-9-12	482676	18.74	9-1/8" Dual Lip Wiper

Part Number	Our Sequence Number	Per Each	Kit Contains
SPIRAL SNAP RING KITS			
CH-SR48	CC3755	186.20	2 each 4-1/2"-8-1/2"
CH-SR49	CC3760	482.06	2 each 4-1/2"-9-3/4"
PISTON RING KITS			
CH-PR48	CC3745	449.23	2 each 4-1/2"-8-1/2"
CH-PR49	CC3750	721.08	2 each 4-1/2"-9-3/4"

**GARBAGE PACKER & DUMP TRUCK SEAL KITS FOR DEMPSTER® TELESCOPIC CYLINDERS
DEMPSTER® FRONT LOADERS, Models DP45, 48, 60, 80**

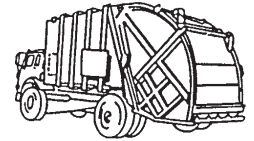
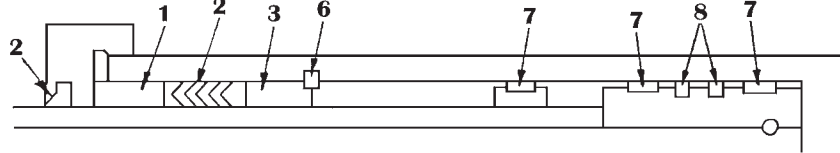
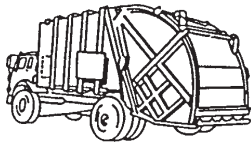
Part number	Our Sequence Number	Per Each	Description
D-B1748 6 STAGE CYLINDER - 4" thru 9"			
WD-49	CC4195	\$438.89	Vee Packing w/ Wiper Kit
WD-TNB49	CC4190	666.44	Nylon Top Bearing Kit
WD-BNB49	CC4185	610.69	Nylon Bottom Bearing Kit
WD-SR49	CC4180	698.52	Top Snap Ring Kit
WD-WR49	CC4175	187.81	Guide Ring Kit 4-1/2 to 9-1/2
WD-PR49	CC4170	528.08	Piston Ring Kit 4-1/2 to 9-1/2
D-B1748 & D-B1747 5 STAGE CYLINDER - 4" thru 8"			
WD-48	CC4235	316.97	Vee Packing with Wiper Kit
WD-TNB48	CC4225	513.80	Nylon Top Bearing Kit
WD-BNB48	CC4220	546.29	Nylon Bottom Bearing Kit
WD-SR48	CC4215	554.21	Top Snap Ring Kit
WD-WR48	CC4210	140.26	Guide Ring Kit 4-1/2 to 8-1/2
WD-PR48	CC4205	344.33	Piston Ring Kit 4-1/2 to 8-1/2

Part number	Our Sequence Number	Per Each	Description
D-B1748 & D-B1747 6 STAGE CYLINDER - 4" thru 9"			
HY-49	CC1245	\$413.56	Vee Packing with Wiper Kit
HY-NYB49	CC1195	420.13	Nylon Bearing Kit
HY-NPB49	CC1360	135.17	Nylon Piston Bearing Kit
HY-SR49	CC1222	416.29	Snap Ring Kit
HY-PR49	CC1215	541.32	Piston Ring Kit

Part number	Our Sequence Number	Per Each	Description
D-B4752 5 STAGE CYLINDER - 4" thru 8"			
HY-48	MM1686	89.74	Vee Packing with Wiper Kit
HY-NYB48	MM1667	188.41	Nylon Bearing Kit
HY-NPB48	MM16669	19.74	Nylon Piston Bearing Kit
HY-SR48*	CC1220	187.23	Snap Ring Kit
HY-PR48*	CC1210	372.89	Piston Ring Kit 4-1/2 to 8-1/2

* 2 each
Do not imply that any part listed is the product of these manufacturers. Prices subject to change without notice

GARBAGE PACKER & DUMP TRUCK SEAL KITS FOR DEMPSTER® TELESCOPIC CYLINDERS



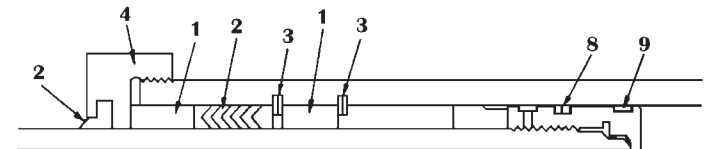
Including D-B1746 and D-B1747 Five Stage and D-B1748 Six Stage

Item	Part Number	Our Sequence Number	Per Each	Size	Qty. Req'd
TOP BEARING					
1	WD-4NGTB	CC4385	\$68.90	3.95" ID	1
1	WD-5NGTB	CC4390	78.01	4.95" ID	1
1	WD-6NGTB	CC4395	81.60	5.95" ID	1
1	WD-7NGTB	CC4400	112.80	6.95" ID	1
1	WD-8NGTB	CC4405	141.21	7.95" ID	1
1	WD-9NGTB	CC4410	143.14	8.95" ID	1
PACKING WITH WIPER					
2	WD-4VSW	MM261026	12.36	3.95" ID	1
2	WD-5VSW	MM261027	15.25	4.95" ID	1
2	WD-6VSW	MM261028	18.32	5.95" ID	1
2	WD-9VSW	CC4445	120.39	8.95" ID	1
BOTTOM BEARING					
3	WD-4NGBB	CC4357	68.90	3.95" ID	1
3	WD-5NGBB	CC4360	78.01	4.95" ID	1
3	WD-6NGBB	CC4365	111.97	5.95" ID	1
3	WD-7NGBB	CC4370	112.80	6.95" ID	1
3	WD-8NGBB	CC4375	141.21	7.95" ID	1
3	WD-9NGBB	CC4380	133.39	8.95" ID	1

Item	Part Number	Our Sequence Number	Per Each	Size	Qty. Req'd
TOP SNAP RING					
6	WD560-009-50	CC4275	\$66.55	5-1/2" ID	1
6	WD560-009-90	CC4295	109.11	9-1/2" ID	1
GUIDE BEARING					
7	WD310-737-40	CC4330	6.41	4-1/2" OD	3
7	WD310-737-50	CC4335	6.41	5-1/2" OD	3
7	WD310-764-60	CC4340	8.40	6-1/2" OD	3
7	WD310-764-70	CC4345	10.92	7-1/2" OD	3
7	WD310-764-80	CC4350	14.45	8-1/2" OD	3
7	WD310-764-90	CC4355	17.17	9-1/2" OD	3
GUIDE RING					
8	WD505-066-17	CC4240	16.41	4-1/2" OD	2
8	WD505-066-24	CC4245	22.87	5-1/2" OD	2
8	WD505-066-28	CC4250	26.45	6-1/2" OD	2
8	WD505-066-35	CC4255	56.47	7-1/2" OD	2
8	WD505-066-38	CC4260	62.97	8-1/2" OD	2
8	WD505-066-40	CC4265	194.80	9-1/2" OD	2
PIN EYE BUSHING					
--	DD-HA 2401	CC1173	50.62	2" ID	2

GARBAGE PACKER & DUMP TRUCK SEAL KITS FOR DEMPSTER® TELESCOPIC CYLINDER, Model D-B 4753 & D-B 4752

Item	Part Number	Our Sequence Number	Per Each	Size	Qty. Req'd
BEARING					
1	BR45000250-750	HD0010	\$23.02	4"	2
1	BR55000250-750	HD0020	24.25	5"	2
1	BR65000250-750	HD0030	28.68	6"	2
1	BR75000250-750	HD0040	31.21	7"	2
1	BR85000250-750	HD0050	37.81	8"	2
PACKING WITH WIPER					
2	HY-4VSW	MM1678	12.29	4"	1
2	HY-5VSW	MM1679	15.09	5"	1
2	HY-6VSW	MM1680	18.46	6"	1
2	HY-7VSW	MM1681	21.11	7"	1
2	HY-8VSW	MM1682	25.88	8"	1
2	HY-9VSW	CC1516	166.25	9"	1
RETAINER					
3	HY-A2229	CC1030	13.87	4"	2
3	HY-A2228	CC1050	11.00	6"	2
3	HY-A3012	CC1055	14.56	7"	2
3	HY-A3013	CC1060	18.04	8"	2

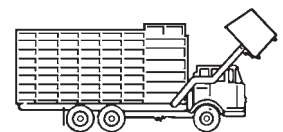
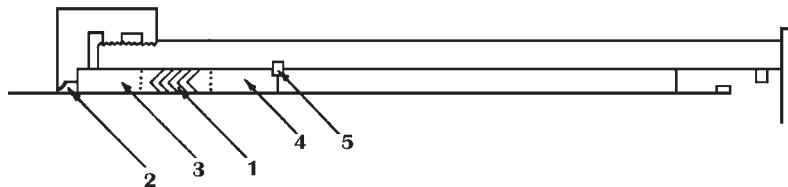
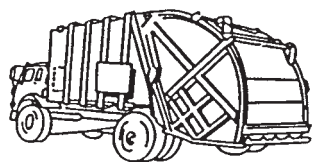


Item	Part Number	Our Sequence Number	Per Each	Size	Qty. Req'd
HEAD NUT					
4	HY-A2217	CC1085	\$116.59	4"	1
4	HY-A2216	CC1090	118.63	5"	1
4	HY-A2215	CC1095	142.84	6"	1
4	HY-A2406	CC1105	198.30	7"	1
4	HY-A2442	CC1115	302.78	8"	1
PISTON RING					
8	DD-HA 2394	CC1264	21.52	7-1/2" OD	2
8	DD-HA 2393	CC1263	25.53	8-1/2" OD	2
8	DD-HA 2417	CC1262	40.68	9-3/4" OD	2
GUIDE RING					
9	DD-HA 2403	CC2332	9.34	9-3/4"	2

TELESCOPIC CYLINDER REPAIR KITS FOR DEMPSTER® REAR LOADERS

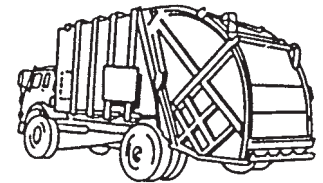
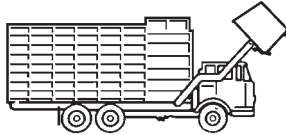
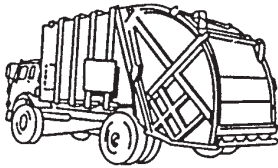
Part Number	Our Sequence Number	Per Each	Description
ROUTE KING II MODELS 200, 250 REAR LOADERS			
DD-6888K	MM07805	\$14.13	B-B6888 Tailgate Lift Cylinder, B-B8281 Tailgate Lift Cylinder CONTAINS: Piston and rod U seals, piston wear ring, rod wiper, o-rings and back up rings
ROUTE KING DRK-16, DRK-20, DRK-25 REAR LOADERS			
DD-5938K	CC1900	195.22	B-B5938 Parker Cylinder. CONTAINS: Piston and rod vee sets, rod wiper and o-rings

GARBAGE PACKER SEAL KITS FOR HEIL® DOUBLE ACTING TELESCOPIC CYLINDERS FOR COLECTOMATIC® MARK III REAR LOADER



Item	Part Number	Description	Qty. Req.	Item	Part Number	Description	Qty. Req.
2	HL-26B2182-5	Wiper Ring 5"	1	5	26A2083-4	Retainer Ring 5" Stage	1
2	HL-26B2182-3	Wiper Ring 4"	1	5	26A2083-3	Retainer Ring 4" Stage	1
2	HL-26B2182-11	Wiper Ring 3"	1	5	26A2083-2	Retainer Ring 3" Stage	1
2	HL-26B2182-10	Wiper Ring 2"	1	5	26A2083-1	Retainer Ring 2" Stage	1

All descriptions and numbers are used for reference purposes only. We do not imply that any part listed is the product of these manufacturers.



VEE PACKING WITH WIPER FOR GARBAGE PACKER TELESCOPIC EJECTOR CYLINDERS USING HEAD NUTS REQUIRING URETHANE WIPERS OR BRASS WIPERS - ITEM 1 AND 2

Part Number	Our Sequence Number	Per Each	Old Part Number	Stage O.D.	Qty. Req'd.
HL26B2260-1A	MM1430	\$14.85	26B2090-4 plus 26-3707-13	4"	1
HL26B2260-2A	MM1432	21.37	26B2090-5 plus 26-3707-14	5"	1

GARBAGE PACKER SEAL KITS FOR HEIL® OLD STYLE SINGLE ACTING TELESCOPIC CYLINDERS

NOTE: OUR REPLACEMENT KITS CONTAIN: Top bearing, vee packing with adapters, bottom bearing and retainer ring - Items 1, 2, 3, 4, and 5

For TRUCKS ONLY with cylinders using URETHANE wipers

Part Number	Our Sequence Number	Per Each	Size	Part Number	Our Sequence Number	Per Each	Size
HL-3.12PBTK	CC3080	\$84.81	3-1/8" Kit	HL-4PBTK	CC3085	\$97.06	4" Kit
HL-2PBTK	CC3070	75.56	2" Kit	HL-5PBTK	CC3090	130.00	5" Kit
HL-3PBTK	CC3075	81.73	3" Kit				

REPLACEMENT HEAD NUTS FOR HYCO/DEMPSTER® EJECTOR CYLINDERS

Part Number	Our Sequence Number	Per Each	Dempster Part Number	Size	Part Number	Our Sequence Number	Per Each	Dempster Part Number	Size
HY-A2217	CC1085	\$116.59	HA01688	4"	HY-A2406	CC1105	\$198.30	HA01687	7"
HY-A2216	CC1090	118.63	HA01454	5"	HY-A2442	CC1115	302.78	HA01686	8"
HY-A2215	CC1095	142.84	HA01453	6"					

MISCELLANEOUS SEALS AND PARTS

VEE SETS FOR HEIL TWIN TELESCOPIC HOISTS

No Wiper Avail.	Our Sequence Number	Per Each	Packing Size Inches	Cylinder Number	Hoist No.
HL26A2038	MM1425	\$6.62	2-1/2	A1D1340-1	2T32-43
HL26A2039	MM1426	5.69	3-1/4	A1D1263-1	2T42-46
			3-1/4	A1D2480	2T53-92
HL26B2260-1A	MM1430	14.85	4	A1D2029-1	2T52-56
			4	A1D1325-1	2T53-80

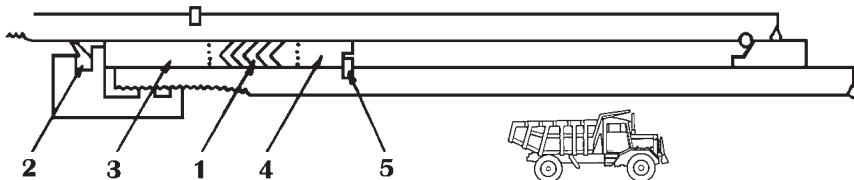
RETAINER RINGS AND LOCK WIRES

Part Number	Our Sequence Number	Per Each	Description	Size O.D.
HL26A2083-1	CC3015	\$6.74	Spiral	2"
HL26A2083-2	CC3020	12.47	Spiral	3"
HL26A2083-3	CC3025	13.87	Spiral	4"
HL26A2083-4	CC3030	12.61	Spiral	5"
HL26A2240-1	CC3045	23.12	Spiral	3/8"
HL26A2406-1	CC3050	33.62	Spiral	6"

GARBAGE PACKER SEAL KITS FOR HEIL® GARBAGE PACKER CYLINDERS

Part Number	Our Sequence Number	Per Each	Heil Cylinder Model Number	Application / Description
HL-K272-957	CC3485	\$144.86	A1D4110	Slide Cylinder CONTAINS: Rod vee packing, urethane wiper, piston seals piston wear ring, o-rings, back-up rings, nylon plug
HL-A1D1275-2K	CC3495	69.86	A1D1275-2	Packing Cylinder CONTAINS: Rod vee set, urethane wiper, o-ring
HL-A1D1276K	CC3500	111.24	A1D1276	Hopper Cylinder CONTAINS: Rod vee sets and urethane wipers for both stages
HL-A1D1285K	MM1454	32.60	A1D1285	Tailgate Cylinder
HL-A1D2801K	MM1458	12.87	A1D2801	Tailgate Cylinder CONTAINS: Rod vee set, urethane wiper, nylon slug
HL-A1D3809K	CC3540	79.52	A1D3809	Packing Cylinder CONTAINS: Rod vee set, substitute for bronze wiper, o-rings, back up ring
HL-A1D3809K	CC3540	79.52	A1D3809	Slide Cylinder CONTAINS: Rod U, urethane wiper, teflon piston seal piston wear ring, o-rings, back up rings, lock wire
HL-K272-664	CC3190	73.65	A1D3921	Slide Cylinder CONTAINS: Rod U, urethane wiper, rod wear ring, teflon piston seal, piston wear ring, o-rings, back up rings, lock wire
HL-K272-665	MM1480	21.88	A1D3902	Blade Cylinder CONTAINS: Rod U, urethane wiper, rod wear ring, teflon piston seal, piston wear ring
HL-K272-933	CC3425	213.82		4-Stage Cylinder CONTAINS: 2-1/2", 3-1/2", 4-1/2", & 5-1/2" Stages, cast iron piston rings, wipers, vee sets, snap rings
HL-K272-937	MM1484	18.90		Tailgate Cylinder CONTAINS: U-cup, vee set, urethane wiper, bearing, retainer ring, set screw
HL-K272-944	MM1485	21.64	A1D4100	Blade Cylinder CONTAINS: Rod vee set, urethane wiper, piston seal, piston wear ring, o-rings, back up rings, nylon plug
HL-K272-948	MM14863	57.74	A1D4093	Outside Packing Cylinder CONTAINS: Rod vee packing, urethane wiper, piston seal, piston wear ring, o-rings, back up ring, nylon plug
HL-K272-949	MM14864	58.69	A1D4094	Inside Packing Cylinder CONTAINS: Rod vee packing, urethane wiper, piston seal, piston, wear ring, o-rings, back up ring, nylon plug
HL-K272-956	CC3480	100.46	A1D4108	Blade Cylinder CONTAINS: Rod vee packing, urethane wiper, piston seal, piston wear ring, o-rings, back up rings, nylon plug

All descriptions and numbers are used for reference purposes only. We do not imply that any part listed is the product of these manufacturers.



HEIL® TELESCOPIC DUMP TRUCK CYLINDERS HPT 53 & 63 HOISTS

Models: A1D3058; A1D3140; A1D3141; A1D3177; A1D3178; A1D3179; A1D3180 OLD STYLE

NOTE: OUR REPLACEMENT KITS CONTAIN: Top bearing, top adapter for the packing, vee packing with adapters, and top retainer ring.

Item	Part Number	Description	Qty. Req.
5	HL-26A2406-1	Top Retaining Ring 6" Stage	1
5	HL-26A2083-4	Top Retaining Ring 5" Stage	1
5	HL-26A2083-3	Top Retaining Ring 4" Stage	1
5	HL-26A2240-1	Top Retaining Ring 3-1/8" Sg.	1

VEE PACKING WITH WIPERS FOR HPT DUMP TRUCK TELESCOPIC HOISTS - Items 1 and 2

Part Number	Our Sequence Number	Per Each	Stage O.D.	Qty. Req'd.
HL26B2266-1A	MM1450	\$6.80	3-1/8"	1
HL26B2260-1A	MM1430	14.85	4"	1
HL26B2260-2A	MM1432	21.37	5"	1
HL26B2260-3A	MM1434	22.13	6"	1

NOTE: Above packing to be used **ONLY** with head nuts requiring URETHANE wiper. Can change head nut to go with urethane wipers.

MULTI-STAGE SEAL KITS FOR HEIL® TELESCOPIC CYLINDERS

Part Number	Our Sequence Number	Per Each	Cylinder Number	Kit Contains:
HL-35	MM149874	\$43.02	A1D3140, A1D3141, A1D3058	1 each: 3-1/8" thru 5" vee sets with wipers
HL-35PBTK	MM14988	259.94	SAME AS HL-35 WITH ADDITIONAL PARTS:	Upper and lower gland bearings and upper retainer ring.

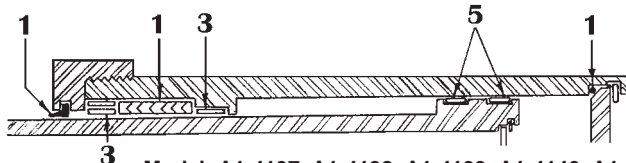
TOP RETAINING RING

Part Number	Our Sequence Number	Per Each	Old Part Number	Stage O.D.	Qty. Req'd
HL26A2083-1	CC3015	\$6.74	26A2083-1	2"	1
HL26A2083-2	CC3020	12.47	26A2083-2	3"	1
HL26A2240-1	CC3045	23.12	26A2240-1	3-1/8"	1
HL26A2083-3	CC3025	13.87	26A2083-3	4"	1
HL26A2083-4	CC3030	12.61	26A2083-4	5"	1
HL26A2406-1	CC3050	33.62	26A2406-1	6"	1

HOW TO IDENTIFY HEIL CYLINDERS

- Rod bearings that also serve as the top and bottom packing adapters
- Spiral type snap rings
- Stage O.D. on even inch except 3-1/8" sleeve
- Gland collars have two "Ears" cast 180° apart.
- There is usually a metal tag attached to the cylinder body with the part number and hoist model number stamped into it: example: A1D3140

NEW STYLE HPT 53 & HPT 63 HOIST TELESCOPIC CYLINDERS



Model: A1-4137, A1-4138, A1-4139, A1-4140, A1-4141, A1-4142, A1-4143, A1-4144

Item	Part Number	Description	Qty. Req'd	Item	Part Number	Description	Qty. Req'd
1	HL-K272-1024	3-1/8" thru 5" packing sets plus wiper and o-ring	1	3	HL26-4157-3	Wear Ring - upper 5"	2
1	HL-K272-1026	4" thru 6" packing sets plus wiper and o-ring	1	3	HL26-4157-4	Wear Ring - upper 6"	2
3	HL26-4394-1	Wear Ring - upper 3-1/8"	2	5	HL26-4395-1	Wear Ring - lower 3-1/2"	2
3	HL26-4394-2	Wear Ring - upper 4"	2	5	HL26-4395-2	Wear Ring - lower 4-1/2"	2
				5	HL26-4395-3	Wear Ring - lower 5-1/2"	2
				5	HL26-4176-4	Wear Ring - lower 6-1/2"	2

KITS FOR HEIL® HPT SERIES CYLINDERS WITH WELDED STOP RINGS PACKING KIT -- Item 1

Part Number	Our Sequence Number	Per Each	Kit Contains
HL-K272-1024	MM1494	\$42.45	For HPT 53 contains: 3-1/8" thru 5" packing, including top & bottom adapters w/ wipers, o-rings, nylon slugs
HL-K272-1026	MM1496	58.71	For HPT 63 contains: 4" thru 6" packing, including top and bottom adapters with wipers, o-rings, nylon slugs

WEAR RINGS -- Items 3 & 5

Part Number	Our Sequence Number	Per Each	Old Part Number	Size	Qty. Req'd.	Part Number	Our Sequence Number	Per Each	Old Part Number	Size	Qty. Req'd.
UPPER WEAR RING - Item 3						LOWER WEAR RING - Item 5					
HL26-4394-1	MM14986	\$5.39	26-4157-1	3-1/8" I.D.	2	HL26-4395-1	MM14987	\$5.59	26-4176-1	3-1/2" O.D.	2
HL26-4394-2	MM149861	2.14	26-4157-2	4" I.D.	2	HL26-4395-2	MM149872	2.30	26-4176-2	4-1/2" O.D.	2
WR52500125-625	HC1030	5.08	-----	5" I.D.	2	HL26-4395-3	MM149873	2.59	26-4176-3	5-1/2" O.D.	2
HL26-4157-4	MM14982	2.41	-----	6" I.D.	2	HL26-4176-4	MM14984	7.01	-----	6-1/2" O.D.	2

NOTE: Wear ring is not included in Heil kits.

REPLACEMENT KITS AND PARTS FOR HEIL® CYLINDERS FOUND ON MACK MX-35 OFF ROAD DUMP TRUCKS

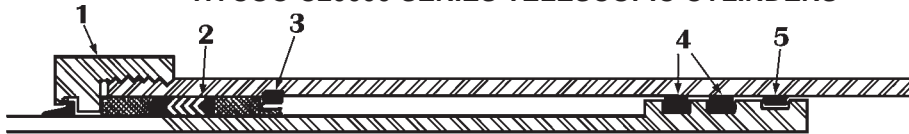
Part Number	Our Sequence Number	Per Each	Description	Kit Contains
HL-K252-9310	CC3275	\$427.58	A1E2125 Cylinder, UT72-64 Hoist, Mack MX-35	Vee packing, wipers, piston rings, o-rings back up rings, nylon slugs, set screws

HEIL® GARBAGE PACKER THIN CROSS SECTION WIPERS

Part Number	Our Sequence Number	Per Each	Description	Part Number	Our Sequence Number	Per Each	Description
HL-2	483114	\$3.94	2" Wiper	HL-4	483120	\$6.62	4" Wiper
HL-3	483116	4.89	3" Wiper	HL-5	483122	8.35	5" Wiper
HL-3.5	483118	6.09	3-1/2" Wiper				

All descriptions and numbers are used for reference purposes only. We do not imply that any part listed is the product of these manufacturers.

DUMP TRUCK & GARBAGE PACKER SEAL KITS FOR HYCO® C20000 SERIES TELESCOPIC CYLINDERS



Item	Part Number	Our Sequence Number	Per Each	Size	Qty. Req'd
HEAD NUT					
1	HY-A2217	CC1085	\$116.59	4"	1
1	HY-A2216	CC1090	118.63	5"	1
1	HY-A2215	CC1095	142.84	6"	1
1	HY-A2406	CC1105	198.30	7"	1
1	HY-A2442	CC1115	302.78	8" for 9" & 9-1/8"	1
1	HY-A22747	CC1110	373.57	8"	1
1	HY-A18411	CC1116	256.99	9"	1
1	HY-A22483	CC1120	283.85	9-1/8"	1

Item	Part Number	Our Sequence Number	Per Each	Size	Qty. Req'd
SNAP RING					
3	HY-B9971-4.5	CC0920	\$62.53	4"	1
3	HY-B9971-5.5	CC0925	59.29	5"	1
3	HY-B9971-6.5	CC0930	59.49	6"	1
3	HY-B9971-7.5	CC0935	60.14	7"	1
3	HY-B9971-8.5	CC0940	83.68	8"	1
PISTON RING					
4	HY-B12071-4	CC1137	33.73	4-1/2"	2
4	HY-B12071-5	CC1138	40.71	5-1/2"	2
4	HY-B12071-6	CC1139	47.58	6-1/2"	2
4	HY-B12071-7	CC1140	52.15	7-1/2"	2
4	HY-B12071-8	CC1141	58.85	8-1/2"	2
4	HY-B12071-9	CC1142	76.29	9-3/4"	2

PACKING, BEARING, AND WIPER					
2	HY-14411-400N	CC1485	43.40	4"	1
2	HY-14411-500N	CC1490	60.27	5"	1
2	HY-14411-600N	CC1495	63.29	6"	1
2	HY-14411-700N	CC1500	82.13	7"	1
2	HY-14411-800N	CC1502	124.38	8"	1
2	HY-14411-900N	CC1506	267.35	9"	1
2	HY-14411-912N	CC1508	240.62	9-1/8"	1

HYCO® WIPERS

Part Number	Our Sequence Number	Per Each	Description
HYDL-3	482658	\$6.09	3" Dual Lip Wiper
HYDL-4	482660	7.70	4" Dual Lip Wiper
HYDL-5	482662	9.31	5" Dual Lip Wiper
HYDL-6	482664	10.68	6" Dual Lip Wiper
HYDL-7	482666	11.10	7" Dual Lip Wiper
HYDL-8	482668	13.37	8" Dual Lip Wiper

SEAL KITS FOR HYCO® PISTON-ROD CYLINDERS

Part Number	Our Sequence Number	Per Each	Cylinder Number	Rod & Bore Size
HY-C3650K	CC1017	\$85.19	C3650	3" X 6"

Contains: Piston U-cups, rod vees, urethane wiper, o-rings

HOW TO IDENTIFY C20,000 SERIES DOUBLE ACTION CYLINDERS

PACKINGS: Alternating rings of neo fab and urethane with nylon adapters-stages are NOT step-bored in packing area.

WIPER: Urethane dual lip

BEARINGS: Nylon; to bearing is 3/4" high and flat on top & bottom, bottom bearing is "step-cut" to fit over snap ring.

SNAP RING: Spring Steel

PISTON: Welded onto stage and has 1 replaceable nylon wear ring and 2 modular iron piston rings

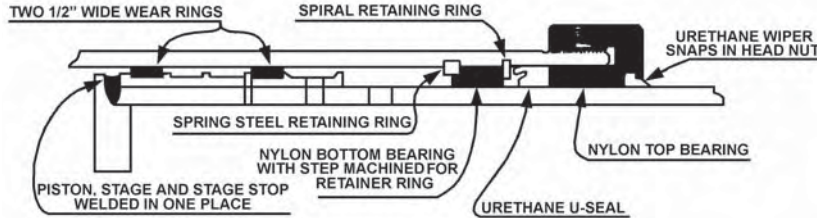
SPECIAL NOTE: Some cylinders were manufactured with 9.000" O.D. large stages. Current cylinders have 9.125" O.D. stages.

NOTE: Effective June 1, 1985, Hyco will no longer use individual serial numbers. They will stamp the model number followed by the date of manufacture

EXAMPLE: 20000-85-220-685

All descriptions and numbers are used for reference purposes only. We do not imply that any part listed is the product of these manufacturers.

CONSTRUCTION SEAL KITS FOR HYCO TELESCOPIC CYLINDERS 70,000 SERIES CYLINDERS WITH K STYLE WIPER



HOW TO IDENTIFY 70,000 SERIES SINGLE ACTING TELESCOPIC CYLINDERS

PACKING: Normally uses urethane u-seals, but may be retrofitted with vee packing. All sizes 1/4" cross section.

WIPERS: Urethane snap-in type.

BEARINGS: Nylon bearings. Outer bearing is flat on the top and bottom. Inner bearing is trapped between two retainers. The bottom side of the inner bearing is step cut on the outside diameter to pilot over snap ring. Cross section is .245"

PISTON: Welded to stage. Uses 2 replaceable wear rings per stage.

STAGE O.D.: 3", 4", 5", 6", 7", 8-1/8", 9-3/8"

SPECIAL INFORMATION: Spring steel type snap ring serves as internal stop. Uses a spiral retainer to trap lower bearing.

IDENTIFICATION: Cylinder model number and serial number stamped on cylinder body near base of cylinder
Ex: 70000-815-180D

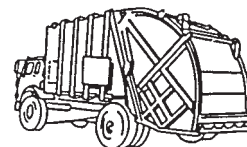
70,000 series single action cylinders are manufactured to use urethane u-seals but may be refitted with a vee packing set if desired. We stock them both ways and are listed below.

TYPE 1: Identical to original Hyco packing sets, OEM type.

TYPE 1: OEM TYPE U-SEAL NYLON BEARING & RETAINER KIT WITH U-SEALS, & 2 WIPERS

Part Number	Our Sequence Number	Per Each	Size	Part Number	Our Sequence Number	Per Each	Size
RETAINER RINGS				TYPE 1: MULTIPLE STAGE KITS			
HY-50002-350	CC1520	\$37.26	3" Retainer Ring	HY-0070-49-3/8	CC1563	\$1098.28	4" - 9-3/8" Kit
HY-50002-450	CC1521	37.26	4" Retainer Ring	HY-0070-57	CC1564	387.47	5" - 7" Kit
HY-B9971-5.5	CC0925	59.29	5" Retainer Ring	HY-0070-58-1/8	CC1565	635.87	5" - 8-1/8" Kit
HY-B9971-6.5	CC0930	59.49	6" Retainer Ring	HY-0070-300	CC1553	79.61	3" Packing Kit
HY-B9971-7.5	CC0935	60.14	7" Retainer Ring	HY-0070-400	CC1554	102.85	4" Packing Kit
HY-B9971-862	CC0950	106.80	8-1/8" Retainer Ring	HY-0070-500	CC1555	116.55	5" Packing Kit
HY-B9971-988	CC0960	210.11	9-3/8" Retainer Ring	HY-0070-600	CC1556	132.07	6" Packing Kit
TYPE 1: MULTIPLE STAGE KITS				HY-0070-700	CC1557	151.76	7" Packing Kit
HY-0070-46	CC1560	350.92	4" - 6" Kit	HY-0070-812	CC1558	259.94	8.12" Packing Kit
HY-0070-47	CC1561	480.98	4" - 7" Kit	HY-0070-938	CC1559	352.98	9.38" Packing Kit
HY-0070-48-1/8	CC1562	732.64	4" - 8-1/8" Kit				

CONSTRUCTION SEAL KITS FOR HYCO TELESCOPIC CYLINDERS 70,000 SERIES CYLINDERS WITH K STYLE WIPER



TYPE 2: Vee packing set retrofit for the original u-seal packing. Vee Packing effective for older cylinders.

TYPE 2: VEE SETS NYLON BEARING & RETAINER KIT WITH 2 WIPERS

Part Number	Our Sequence Number	Per Each	Size
HY-0072-300	CC1566	\$92.05	3" Packing Kit
HY-0072-400	CC1567	121.92	4" Packing Kit
HY-0072-500	CC1568	144.85	5" Packing Kit
HY-0072-600	CC1569	164.25	6" Packing Kit
HY-0072-700	CC1570	185.01	7" Packing Kit
HY-0072-812	CC1571	322.25	8.12" Packing Kit
HY-0072-938	CC1572	415.48	9.38" Packing Kit

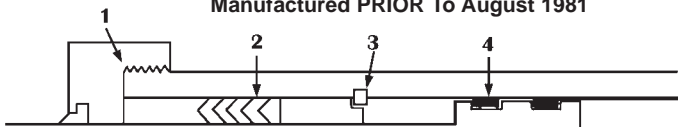
Part Number	Our Sequence Number	Per Each	Size
NYLON PISTON WEAR RINGS			
HY-10764-300	CC1522	\$6.00	3-1/2" Wear Ring
HY-10764-400	CC1523	6.41	4-1/2" Wear Ring
HY-10764-500	CC1524	6.41	5-1/2" Wear Ring
HY-10764-600	CC1525	8.40	6-1/2" Wear Ring
HY-10764-700	CC1526	8.40	7-1/2" Wear Ring
HY-10764-812	CC1527	15.08	8-5/8" Wear Ring
HY-10764-938	CC1528	28.36	9-7/8" Wear Ring

TYPE 2: MULTIPLE STAGE KITS			
HY-0072-46	CC1573	424.87	4" - 6" Kit
HY-0072-47	CC1574	607.49	4" - 7" Kit
HY-0072-48-1/8	CC1575	987.18	4" - 8-1/8" Kit
HY-0072-49-3/8	CC1576	1526.87	4" - 9-3/8" Kit
HY-0072-57	CC1577	491.85	5" - 7" Kit
HY-0072-58-1/8	CC1578	777.02	5" - 8-1/8" Kit

MISCELLANEOUS PARTS			
HY-A2688	CC0972	7.30	Manual bleeder valve
HY-A20419	MM1660	0.08	Set screw for headnut
HY-A20420	CC1145	0.90	Nylon slug for headnut

DUMP TRUCK & GARBAGE PACKER SEAL KITS FOR HYCO® C30,000 SERIES TELESCOPIC CYLINDERS

Manufactured PRIOR To August 1981



Item	Part Number	Our Sequence Number	Per Each	Size	Qty. Req'd
HEAD NUT					
1	HY-A2527	CC1080	\$113.10	3"	1
1	HY-A2217	CC1085	116.59	4"	1
1	HY-A2216	CC1090	118.63	5"	1
1	HY-A2215	CC1095	142.84	6"	1
1	HY-A3535	CC1100	296.33	7" for 8-1/4"	1
1	HY-A2406	CC1105	198.30	7" for 8" & 8-1/8"	1
1	HY-A20621	CC1125	225.96	8" Onto Body	1

Item	Part Number	Our Sequence Number	Per Each	Size	Qty. Req'd
SNAP RING					
3	HY-B9971-3.5	CC0945	\$84.08	3"	1
3	HY-B9971-4.5	CC0920	62.53	4"	1
3	HY-B9971-5.5	CC0925	59.29	5"	1
3	HY-B9971-6.5	CC0930	59.49	6"	1
3	HY-B9971-7.5	CC0935	60.14	7"	1
3	HY-B9971-8.5	CC0940	83.68	8"	1
3	HY-B9971-862	CC0950	106.80	8-1/8"	1
3	HY-B9971-900	CC0955	175.37	8-1/4"	1
3	HY-B9971-988	CC0960	210.11	9-3/8"	1

PACKING KIT WITH WIPER					
2	HY-14411-300N	CC1487	58.22	3"	1
2	HY-14411-400N	CC1485	58.22	4"	1
2	HY-14411-500N	CC1490	80.84	5"	1
2	HY-14411-600N	CC1495	84.88	6"	1
2	HY-14411-700N	CC1500	109.66	7"	1
2	HY-14411-800N	CC1502	166.85	8"	1
2	HY-14411-812N	CC1503	232.19	8-1/8"	1
2	HY-14411-825N	CC1504	314.19	8-1/4"	1
2	HY-14411-938N	CC1509	308.22	9-3/8"	1

WEAR RINGS					
Part Number	Our Sequence Number	Per Each	Contains		
HY-NPB48	MM16669	\$19.74	2 each 4-1/2" thru 8-1/2"		

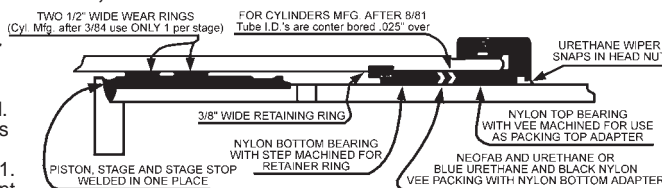
MISCELLANEOUS PARTS					
Part Number	Our Sequence Number	Per Each	Description	Qty. Req'd	
HY-ABV100	CC0973	\$95.22	Automatic Bleeder	1	

BEARING PACKING & WIPERS					
Part Number	Our Sequence Number	Per Each	Description	Qty. Req'd	
HY-208-46	MM1695	\$186.65	1 each 4" thru 6"	--	
HY-208-47	MM1696	278.06	1 each 4" thru 7"	--	

HOW TO IDENTIFY C30,000 SERIES SINGLE ACTION ONLY CYLINDERS - Mfg. PRIOR to August 1981	
PACKING WIPER BEARINGS Alternating rings of urethane and nylon Urethane dual lip, like old style Nylon; top bearing serves as vee packing top adapter, bottom bearing is "step cut" to fit over snap ring SNAP RING Spring Steel	PISTON BEARING HEAD NUT 2 Replaceable wear rings Same as used on "old style" 9,000 series except head nut which threads onto body is a special ROD EYE SERIAL NUMBERS Welded into rod stage From XXXXX876 up to and including XXXXX781

DUMP TRUCK & GARBAGE PACKER SEAL KITS FOR HYCO® C30,000 SERIES TELESCOPIC CYLINDERS Manufactured AFTER July 1981

New Pack Set Bore Design can be identified by the Step In Bore Diameter Located approximately 1/2" above the Retaining Ring
 Hyco 30,000 Series cylinders manufactured AFTER July, 1981 utilize a special packing set and top bearing to fit the stuffing box area which is machined oversized. These new cylinders can be identified by locating the "step" on the state I.D. which is approximately 1/2" above the snap ring groove. Or, note the serial number for date of manufacture. EXAMPLE: 12345 881 indicates date of manufacture of August 1981.
IMPORTANT: These cylinders require special packing sets. Use only the replacement packing kits specified on this page in these cylinders. Our kits include bottom and top bearing, packing set and wiper.



PACKING SET PLUS WIPER PLUS GUIDE RING OR BUSHING

Part Number	Our Sequence Number	Per Each	Description
HY-14750-300	CC1443	\$65.74	B12476-3.00 plus A2920
HY-14750-400	CC1445	65.74	B12476-4.00 plus A2821
HY-14750-500	CC1450	67.24	B12476-5.00 plus A2922
HY-14750-600	CC1455	78.41	B12476-6.00 plus A2923
HY-14750-700	CC1460	130.33	B12476-7.00 plus A2924

Part Number	Our Sequence Number	Per Each	Description
HY-14750-800	CC1465	\$161.01	B12476-8.00 plus A2925
HY-14750-812	CC1470	212.83	B12476-8.12 plus A20559
HY-14750-825	CC1475	231.07	B12476-8.25 plus A3439
HY-14750-938	CC1480	242.74	B12476-9.38 plus A20565

NOTE: Head nuts, snap rings & guide rings are the same for all 30,000 series cylinders

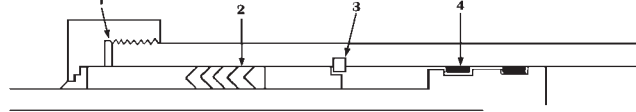
DUMP TRUCK & GARBAGE PACKER SEAL KITS FOR HYCO® C30,000 SERIES TELESCOPIC CYLINDERS

Part Number	Our Sequence Number	Per Each	Size
BEARING PACKING & WIPERS			
HY-14760-47	MM16761	\$284.81	1 each 4" thru 7"
HY-14750-48	MM16762	419.02	1 each 4" thru 8"

Part Number	Our Sequence Number	Per Each	Contains
WEAR RINGS			
HY-NPB48	MM16669	\$19.74	2 each 4-1/2" thru 8-1/2"

HOW TO IDENTIFY C30,000 SERIES SINGLE ACTION ONLY CYLINDERS - Mfg. AFTER July 1981	
PACKING	Alternating rings of urethane and nylon. NOTE: stage bore in packing area is .025/.030 over the 1/2" urethane dual lip
WIPER	Urethane dual lip
BEARINGS	Nylon; top bearing serves as vee packing top adapter, bottom bearing is "step cut" to fit over snap ring
PISTON BEARING	2 Replaceable wear rings
HEAD NUT	Same as used on "old style" except the nut which threads onto body is a special
ROD EYE	Welded into rod stage
SNAP RING	Spring Steel
SERIAL NUMBERS	From XXXXX881 to present

DUMP TRUCK & GARBAGE PACKER SEAL KITS FOR HYCO® C10,000 SERIES TELESCOPIC CYLINDERS



Item	Part Number	Our Sequence Number	Per Each	Size	Qty. Req'd.
HEAD NUT					
1	HY-401-6.94	CC1275	\$193.99	6"	1
PACKING KIT WITH WIPER					
2	HY-11426-300	CC1434	85.47	3"	1
2	HY-11426-400	CC1435	85.78	4"	1
2	HY-11426-500	CC1436	104.37	5"	1
2	HY-11426-600	CC1437	116.09	6"	1
2	HY-11426-700	CC1439	149.20	7"	1
2	HY-11426-800	CC1440	187.53	8"	1
2	HY-11426-825	CC1441	369.23	8-1/4"	1
SET SCREW & SLUG					
	HY-A20866	CC1150	3.58	- -	1

Item	Part Number	Our Sequence Number	Per Each	Size	Qty. Req'd.
SNAP RING					
3	HY-B9971-3.5	CC0945	\$84.08	3"	1
3	HY-B9971-4.5	CC0920	62.53	4"	1
3	HY-B9971-5.5	CC0925	59.29	5"	1
3	HY-B9971-6.5	CC0930	59.49	6"	1
3	HY-B9971-7.5	CC0935	60.14	7"	1
3	HY-B9971-8.5	CC0940	83.68	8"	1
3	HY-B9971-900	CC0955	175.37	8-1/4"	1
WEAR RINGS					
Part Number	Our Sequence Number	Per Each	Size		
HY-NPB48	MM16669	\$19.74	2 ea	4-1/2" thru 8-1/2"	

HOW TO IDENTIFY HYCO® C10,000 SERIES SINGLE ACTION ONLY CYLINDERS	
PACKING	Alternating rings of urethane and nylon, nylon bottom adapter only
WIPER	Nylon
BEARINGS	Nylon; top bearing, serves as vee packing top adapter bottom bearing is "step cut" to fit over snap ring
SNAP RING	Spring Steel
HEAD NUT	Approximately 2" wide, wiper lays in head nut loose. No wiper groove.
Piston Bearing	2 Replaceable wear rings
SPECIAL CAUTION	Some of these cylinders have been repaired using our "MHC" Kits which utilize "neo-fab packing. Don't fooled look at the complete cylinder design, especially the head nut
SERIAL NUMBERS	From XXXXX774 up to and including XXXXX876 - there is some mixture of 10,000 & 30,000 cylinders
ROD EYE	Threads into rod stage

HYCO® CYLINDER INFORMATION

Hyco has offered several cylinder designs in the past few years. The information provided on these pages will assist you in identifying the design of the particular cylinder you are repairing, and will aid you in purchasing the correct parts. Please, carefully note the drawing at the top of the pages.

Hydraulics Company is an authorized Hyco distributor. As such, some items supplied will be those of the original manufacturer. However, many items are still Hydraulics Company replacement parts. If specifications require, we will supply any item as a genuine part upon request.

HOW TO IDENTIFY C900 thru C2000 SERIES OLD DESIGN SINGLE ACTION CYLINDERS	
PACKING	Alternating rings of urethane and neo-fab, nylon top and bottom adapters
BEARING	2 bronze, 3/4" high, flat top and bottom, one bearing is between the two snap rings
SNAP RINGS	2 Spiral type
PISTON BEARING	Bronze overlay on steel; these are manufactured as part of the piston and are not replaceable
SERIAL NUMBERS	Up to and including XXXXX774

- Brass bearings with flat top and bottom; 1 above and 1 below packing
- Large 1/2" spanner holes in gland nuts
- Numbers stamped on tag at dead end of cylinder-example: C1917-87654-190SA TEL 3,000, 4,000", etc., except some cylinders which have 8-1/4", 9-3/4" stages
- End plugs welded on bottom of all stages with bronze overlay for piston bearings
- Used 1/4" c.s. packing
- Small wipers
- Stage outside diameters all on the even inch.00; i.e. Spiral type snap rings

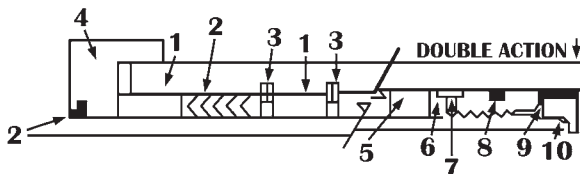
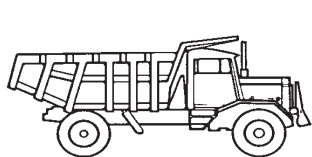
HOW TO IDENTIFY HYCO® C9000 SERIES OLD DESIGN DOUBLE ACTION CYLINDERS
Same as single action except the pistons are steel and thread onto each stage.

PISTON SEAL	2 cast iron piston rings located in a common groove
PISTON BEARING	2 replaceable nylon wear rings

Same as single action above except steel piston threads onto stage and has 2 steel piston rings and 2 nylon guide rings

HOW TO IDENTIFY HYCO® NEW STYLE CYLINDERS

- Top bearing is vee grooved to serve as packing adapter
- Bearing below the packing has step cut on bottom
- Packing vee rings are hard nylon alternating with urethane
- One of two types of wiper rings used (1) hard nylon wiper which does NOT fit in groove (2) soft urethane wiper which snaps into groove.
- Stage outside diameters all on even inch except some cylinder models which use an 8-1/4" or 9-3/4" size
- Numbers painted on body - example: C10003-85-190
- Nylon rod bearings
- 3/8" wide snap ring as internal stop
- Two wear rings used as piston bearings



C900 THRU C2000 SERIES - Single Acting

Item	Part Number	Our Sequence Number	Per Each	Size	Qty. Req'd.
BUSHING OR GLAND BEARING					
1	BR35000250-750	HD0001	\$23.02	3"	2
1	BR45000250-750	HD0010	23.02	4"	2
1	BR55000250-750	HD0020	24.25	5"	2
1	BR65000250-750	HD0030	28.68	6"	2
1	BR75000250-750	HD0040	31.21	7"	2
1	BR85000250-750	HD0050	37.81	8"	2
BUSHING					
1	HY-A3438N	CC1005	56.59	8-1/4"	2
1	HY-A8308	CC1012	327.09	9-3/4" - top	1
1	HY-A8258	CC1013	333.63	9-3/4" - bottom	1
PACKING AND WIPER ASSEMBLY					
2	HY-3VSW	MM1677	9.51	3"	1
2	HY-4VSW	MM1678	12.29	4"	1
2	HY-5VSW	MM1679	15.09	5"	1
2	HY-6VSW	MM1680	18.46	6"	1
2	HY-7VSW	MM1681	21.11	7"	1
2	HY-8VSW	MM1682	25.88	8"	1
2	HY-8.25VSW	CC1515	146.32	8-1/4"	1
2	HY-9VSW	CC1516	166.25	9"	1
2	HY-9.75VSW	CC1517	316.32	9-3/4"	1

C9000 SERIES - Double Acting

Item	Part Number	Our Sequence Number	Per Each	Size	Qty. Req'd.
RETAINER RING					
3	HY-A2477	CC1025	\$5.83	3"	2
3	HY-A2229	CC1030	13.87	4"(.105" Thick)	2
3	HY-A2228	CC1050	11.00	6"	2
3	HY-A3012	CC1055	14.56	7"	2
3	HY-A3013	CC1060	18.04	8"	2
3	HY-A4616	CC1065	131.47	8-1/4"	2
3	HY-A8246	CC1075	151.80	9-3/4"	2
HEAD NUT					
4	HY-A2527	CC1080	113.10	3"-12	1
4	HY-A2217	CC1085	116.59	4"-12	1
4	HY-A2216	CC1090	118.63	5"-12	1
4	HY-A2215	CC1095	142.84	6"-12	1
4	HY-A3535	CC1100	296.33	7"-12 for 8-1/4"	1
4	HY-A2406	CC1105	198.30	7"-12	1
4	HY-A2442	CC1115	302.78	8"-12	1
4	HY-A3534	CC1130	736.20	8-1/4"-12	1
BLEEDER					
4	HY-A2688	CC0972	7.30	- -	1

DOUBLE ACTION CYLINDER ONLY

Item	Part Number	Our Sequence Number	Per Each	Description	Req'd.	Part Number	Our Sequence Number	Per Each	Description	Req'd.	
8	DD-HA 2394	CC1264	\$21.52	Piston Rings 7-1/2"	2	8	DD-HA 2417	CC1262	\$40.68	Piston Rings 9-3/4"	2
8	DD-HA 2393	CC1263	25.53	Piston Rings 8-1/2"	2						

NOTE: Piston Rings are Cast Iron

SEAL KITS FOR OLD DESIGN HYCO® TELESCOPIC CYLINDERS

Part Number	Our Sequence Number	Per Each	Contains	Part Number	Our Sequence Number	Per Each	Contains
HY-46	MM1684	\$44.85	Vee Packing Kit: 1 ea 4" thru 6" vee set with wiper rings	HY-NPB48	MM16669	\$19.74	Nylon Piston Brg. Kit: 2 ea 4-1/2" thru 8-1/2" OD nylon piston bearing
HY-47	MM1685	64.77	Vee Packing Kit: 1 ea 4" thru 7" vee set with wiper rings	HY-NYB48	MM1667	188.41	Nylon Bearing Kit: 2 ea 4" thru 8" nylon bearings
HY-48	MM1686	89.74	Vee Packing Kit: 1 ea 4" thru 8" vee set with wiper rings				

**GARBAGE PACKER SEAL KITS
FOR LEACH® TELESCOPIC & NON-TELESCOPIC CYLINDERS**

Part Number	Our Sequence Number	Per Each	Cylinder Number	Description	Kit Contains
LCH-15452	CC5040	\$115.51	15026	6" Operating Cyl.	2-6" Neo-fab piston U's, 2-piston U back up rings, urethane rod U, metal clad wiper, o-rings, back up ring
LCH-15453	CC5045	65.54	15074	4" Tailgate Cyl.	1-4" piston cup, piston wear ring, metal clad wiper, snap ring, o-rings
LCH-15454	MM2110	52.27	15049	Holding Cyl.	1-5" urethane piston U, wiper, rod U, snap rings, o-rings, back up rings
LCH-15468	CC5110	76.72	15373	Sanicruiser 4" Old Container Lift Cyl.	2-4" Neo-fab U-cups, 2-1/4" Neo-fab U-cup, metal clad wiper, o-ring, snap ring
LCH-2R2008K	CC5055	114.32	2R1008	6" Cylinder	2-6" piston cups, piston wear ring, rod vee set, wiper, o-rings, back up ring
LCH-2R2114A	CC5065	132.89	2R1006A	6" Operating Cyl. For all 4 Packing Cyl., All cyls. on the truck	2-6" Neo-fab U's, 2 U cup back up rings, 2 piston snap rings, rod U-packer, wiper, o-ring
LCH-33557	CC5080	98.32		5" Packmaster II Packing Cylinder	2-5" Neo-fab U-cups and washers, 2-1/4" rod U-cup, urethane wiper, o-ring
LCH-33558	MM2120	28.29	31778	4" Cylinder	2-4" Neo-fab U-cups, 2-1/4" rod U-cup, metal clad wiper, o-ring, back up ring
LCH-P16-541	CC5090	103.75	P16-273	4" Push Out Cyl.	2-4" piston cups, piston wear ring, rod vee set, metal clad wiper, o-rings

All descriptions and numbers are used for reference purposes only.

We do not imply that any part listed is the product of these manufacturers.

Part Number	Our Sequence Number	Per Each	Cylinder Number	Description	Kit Contains
LCH-P16-569	CC5095	\$52.31	P16-204	3" Tailgate Lift Cyl.	1-3" piston cup, piston wear ring, metal clad wiper, snap ring, o-rings
LCH-P16-570	CC5100	43.41	P16-7	4" Clamp Cyl. on the Model 2R	1-4" piston cup, piston wear ring, o-ring
LCH-P16-934K	CC5105	83.99	P16-934	4" Cylinder	1-4" piston cup, piston wear ring, rod Neo-fab, U, steel washer, metal clad wiper, snap ring, o-ring
LCH-PO-1567	CC5130	63.86	PO-265	4" Tailgate Cylinder on the Model 2R	1-4" piston cup, piston wear ring, rod U-cup, snap ring, cup, snap ring, o-ring
LCH-PO1148	CC5125	283.96	PO-1166	6" Push Out Cylinder	2-6" piston cups, piston wear ring, rod vee set, steel washer, o-rings
LCH-SR7158	CC5140	107.13	SR6002	5" Holding Cylinder	2-5" piston cups, piston wear ring, snap ring, wiper, o-rings, back up ring
LCH-SR9002	CC5155	152.99	SR6021	6" Packing Cyl.	2-6" piston cups, piston wear ring, rod vee set, metal clad wiper, o-rings
LCH-U1291D	CC5160	129.47	U1158	6" Clamp Cyl.	2-6" Neo-fab piston U's, piston U-cup, back up rings, Neo-fab rod U, steel washer, metal clad wiper, retainer rings, o-rings

Leach®, Packmaster®, and Seni Cruiser® are the registered trademark of Leach Corporation

SEAL KITS FOR GALION® TELESCOPIC CYLINDERS

Part Number	Our Sequence Number	Per Each	Description
PG-35	MM26040	\$48.65	1 set each: 3" thru 5" packing assemblies with wipers plus 3 each: 10-27728 set screws and 10-11641 nylon slugs
PG-37	MM26042	95.70	1 set each: 3" thru 7" packing assemblies with wipers plus 5 each: 10-27728 set screws and 10-11641 nylon slugs
PG-46	MM26026	59.09	1 set each: 4" thru 6" packing assemblies with wipers plus 3 each: 10-27728 set screws and 10-11641 nylon slugs
PG-47	MM26052	82.78	1 set each: 4" thru 7" packing assemblies with wipers plus 4 each: 10-27728 set screws and 10-11641 nylon slugs
PG-57	MM26061	66.98	1 set each: 5" thru 7" packing assemblies with wipers plus 3 each: 10-28828 set screws and 10-11641 nylon slugs
PG-68	MM26071	75.15	1 set each: 6" thru 8" packing assemblies with wipers plus 3 each: 10-27728 set screws and 10-11641 nylon slugs

SEALS FOR PEABODY GALION® PUMPS
Parts for Dump Truck Pumps

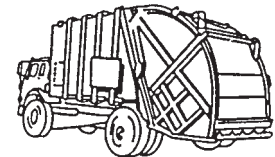
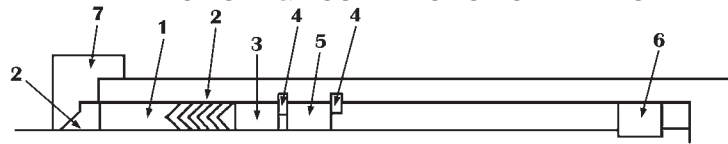
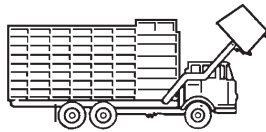
Part Number	Our Sequence Number	Per Each	Description	Qty. Req'd.
PG-20-23878	MM26001	\$12.95	13/16" x 1-5/16" x 5/8" vee set with no top adapter	2
PG-H14331	MM2600	14.94	13/16" x 1-5/16" x 7/8" vee set with top adapter (Galion P/N 9681)	2
PG-91-02101	CC0370	64.75	13/16" shaft packing kit - old P/N 20-22534x2	1

PLEASE NOTE: Pump Shaft Packing is priced per shaft, but packaged TWO pieces per package

HOW TO IDENTIFY PEABODY GALION® CYLINDERS

- Castiloid rod bearings
- Small 1/4" spanner holes in gland nuts
- Stage outside diameters are all .030" under even inch, except the 9" size. i.e., 3.970", 4.970" etc. Uses .275" c.s. packing
- Top bearing is vee grooved and serves as packing to adapter
- Thin gland nuts and small 5/32" wiper which lays in head nut loose
- Numbers stamped in steady rest area towards live end of body

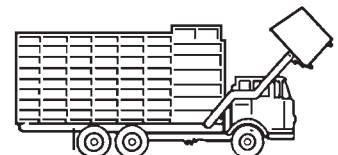
GARBAGE PACKER SEAL KITS FOR PEABODY GALION® TELESCOPIC CYLINDERS
SINGLE & DOUBLE ACTION CYLINDERS



Part Number	Our Sequence Number	Per Each	Stage O.D.	Qty. Req'd.	Part Number	Our Sequence Number	Per Each	Stage O.D.	Qty. Req'd.
BEARINGS AND VEE SETS WITH WIPERS - ITEM 1 & 2					SNAP RINGS - ITEM 4				
FOR CYLINDER WITH SPECIAL GLASS FILLED TOP BEARING AND SPECIAL ADAPTER ON VEE SET									
PG-3PBK	MM26017	\$34.23	2.970"	1	PG10-5304	CC0580	\$6.74	2"	1
PG-4PBK	MM26018	29.03	3.970"	1	PG10-25689	CC0585	15.19	3"	1
PG-5PBK	MM26019	33.32	4.970"	1	PG10-25688	CC0590	13.87	4"	1
PG-6PBK	MM2602	37.92	5.970"	1	PG10-25687	CC0595	14.19	5"	1
PG-7PBK	MM26021	44.37	6.970"	1	PG10-25686	CC0605	11.00	6"	1
PG-8PBK	MM26022	50.53	7.970"	1	PG10-25718	CC0610	14.56	7"	1
PG-9PBK	CC0540	265.69	9.125"	1	PG10-25729	CC0615	30.23	8"	1
VEE SETS WITH WIPERS - ITEM 2					PISTON RINGS - ITEM 5 - DOUBLE ACTION				
FOR CYLINDER WITH CAST IRON BEARING					TELESCOPIC CYLINDER ONLY				
PG-2VSW	MM26009	8.11	1.970"	1	PG10-25892	CC0625	15.92	Telescopic 3-1/2"	2
PG-3VSW	MM2601	10.85	2.970"	1	PG10-25880	CC0630	16.22	Telescopic 4-1/2"	2
PG-4VSW	MM26011	14.08	3.970"	1	PG10-25868	CC0635	22.88	Telescopic 5-1/2"	2
PG-5VSW	MM26013	17.65	4.970"	1	PG10-25867	CC0640	52.98	Telescopic 6-1/2"	3
PG-6VSW	MM26014	21.44	5.970"	1	PG10-25866	CC0645	67.50	Telescopic 7-1/2"	3
PG-9VSW	CC0505	129.91	9.125"	1	PG10-25891	CC0650	73.97	Telescopic 8-1/2"	3

GARBAGE PACKER SEAL KITS FOR PEABODY GALION® CYLINDERS
FOR E-Z PACK REAR LOADERS

Part Number	Our Sequence Number	Per Each	Description
PG-57	MM26061	\$66.98	Telescopic Ejection Cylinder for RL-25
PG-3021CDAK	CC0405	72.92	Packing Cylinder for Model M-200-A Rear Loader
PG-3027DAK	MM26003	22.90	Inside Packing Cylinder for Model M-200-A Rear Loader
PG-3032DAK	CC0415	112.49	Outside Packing Cylinder for Model M-200-A Rear Loader
PG-4030DAK	CC0435	80.34	Packing Cylinder for C-200-18 Rear Loader



Part Number	Our Sequence Number	Per Each	Description	Part Number	Our Sequence Number	Per Each	Description
PEABODY GALION® WIPERS							
PGWO1970	482776	\$5.07	1.970" Wiper	PGWO5970	482784	\$11.99	5.970" Wiper
PGWO2970	482778	6.50	2.970" Wiper	PGWO6970	482786	11.70	6.970" Wiper
PGWO3970	482780	8.29	3.970" Wiper	PGWO7970	482788	12.83	7.970" Wiper
PGWO4970	482782	10.68	4.970" Wiper	PGWO9125	482790	15.33	9.125" Wiper

Part Number	Our Sequence Number	Per Each	Description
-------------	---------------------	----------	-------------

SEAL KITS FOR PEABODY GALION® CYLINDERS ON E-Z PACK - SIDE LOADERS

PG-2VSW	MM26009	\$8.11	Hydraulic Tailgate Lift Cylinder for Models A-16, 20, 24 & SL-16, 20, 24
---------	---------	--------	--

FOR E-Z PACK FRONT LOADERS

PG-68	MM26071	\$75.15	Ejection Cylinder used on 30 yard high compaction
-------	---------	---------	---

E-Z PACK CYLINDERS WITH ROD U-SEALS

PG-4522EDAPR	CC0305	\$96.62	Kit with piston ring
--------------	--------	---------	----------------------

MISCELLANEOUS PARTS

Part Number	Our Sequence Number	Per Each	Description	Qty. Req'd.	Part Number	Our Sequence Number	Per Each	Description	Qty. Req'd.
PG10-11641	CC0550	\$0.90	Nylon Slug in head nut	1	PG10-27728	CC0560	\$1.76	Set screw in head nut	1
PG10-25440	CC0555	7.30	Bleeder Valve-S.A. Cyl.	1					

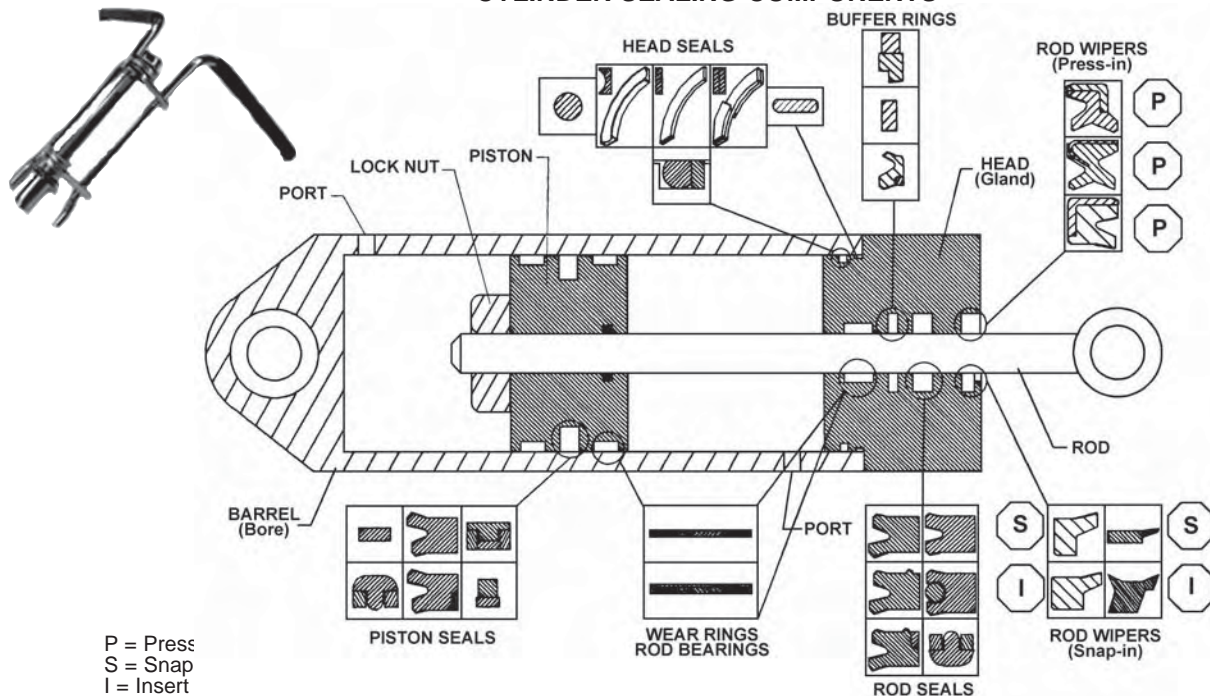
VEE SET, WIPER, BEARING, SET SCREW & SLUGS FOR GALION TELESCOPIC CYLINDERS

Part Number	Our Sequence Number	Per Each	Description	Qty. Req'd.	Part Number	Our Sequence Number	Per Each	Description	Qty. Req'd.
PG-37PBK	CC0665	\$478.15	3" thru 7"	1	PG-57PBK	CC0680	\$343.90	5" thru 7"	1
PG-38PBK	CC0690	661.04	3" thru 8"	1	PG-58PBK	CC0700	526.77	5" thru 8"	1
PG-46PBK	CC0670	277.43	4" thru 6"	1	PG-67PBK	CC0685	253.29	6" thru 7"	1
PG-47PBK	CC0695	415.68	4" thru 7"	1	PG-68PBK	CC0705	436.20	6" thru 8"	1
PG-48PBK	CC0675	598.58	4" thru 8"	1					

GARBAGE PACKER SEAL KITS FOR PERFECTION COBEY® HYDRAULIC CYLINDERS

Part Number	Our Sequence Number	Per Each	Description
PF-35	MM26117	\$135.97	Perfection A58704 Gland Kit contains: 1 set each 3" thru 5" packing assemblies with wipers FOR CYLINDERS: Model 5372, 5388, 598
PF-46	MM261172	172.34	Perfection A58705-A58706 Gland Kit contains: 1 set each 4" thru 6" packing assemblies w/ wipers FOR CYLINDERS: Model 6388, 63105, 63120, 63132
PF-47	MM261173	262.15	Perfection 58709 Gland Kit contains: 1 set each 4" thru 7" packing assemblies with wipers FOR CYLINDERS: Model 74120, 74140
PF-57	MM261178	211.45	Perfection A58708 Gland Kit contains: 1 set each 5" thru 7" packing assemblies with wiper rings FOR CYLINDERS: Models 7388, 73101VS-DA, 73105, 73120, 73132
PF-58	MM261179	312.54	Perfection A58712 Gland Kit contains: 1 set each 5" thru 8" packing assemblies with wipers FOR CYLINDERS: Models 84134VS-DA, 84138

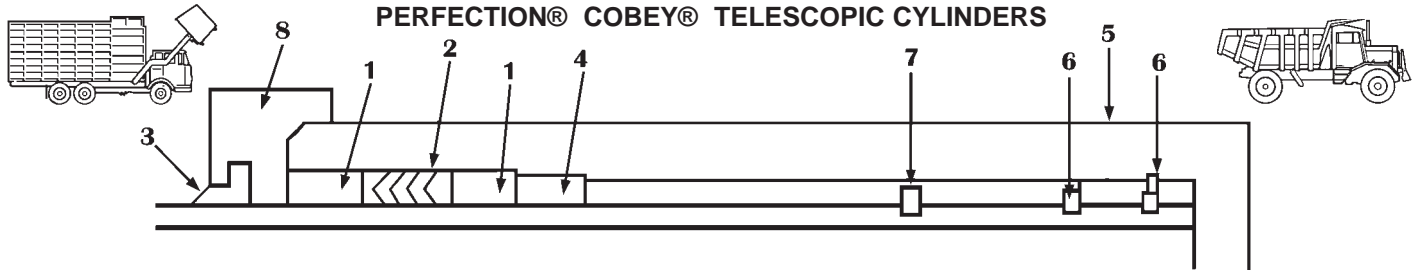
CYLINDER SEALING COMPONENTS



The information and drawings were provided by Hercules Bulldog Sealing Products, Copyright © 2001 All rights Reserved

All descriptions and numbers are used for reference purposes only. We do not imply that any part listed is the product of these manufacturers.
 © 2011 by Baum Hydraulics Corporation 1-800-228-9222 www.baumhydraulics.com Prices subject to change without notice

DUMP TRUCK & GARBAGE PACKER SEAL KITS FOR PERFECTION® COBEY® TELESCOPIC CYLINDERS



Part Number	Nominal Size	Our Sequence Number	Per Each	Stage O.D./ Seal I.D.	Qty. Req'd.
NYLON CYLINDER BEARINGS - ITEM 1					
PF-4NB	4"	CC4795	\$33.65	3.580	2
PF-5NB	5"	CC4800	40.98	4.580	2
PF-6NB	6"	CC4805	44.40	5.445	2
PF-7NB	7"	CC4810	49.00	6.445	1
PF-8NB	8"	CC4815	38.59	7.445	1

VEE PACKING with WIPER for Telescopic Cylinders - ITEMS 2 & 3					
Part Number	Nominal Size	Our Sequence Number	Per Each	Stage O.D./ Seal I.D.	Qty. Req'd.
PF-3VSW	3"	CC4727	29.90	2.580	1
PF-4VSW	4"	CC4730	60.82	3.580	1
PF-5VSW	5"	CC4735	72.41	4.580	1
PF-6VSW	6"	CC4740	73.54	5.445	1
PF-7VSW	7"	CC4745	107.75	6.445	1
PF-8VSW	8"	CC4750	121.28	7.445	1
PF-9VSW	9"	CC4755	331.43	8.445	1

Part Number	Nominal Size	Our Sequence Number	Per Each	Stage O.D./ Seal I.D.	Qty. Req'd.
"U-PACKER" ROD SEALS & WIPERS FOR COBEY® TELESCOPIC EJECTOR CYLINDER P/N A84704					
PF-4UW	4"	CC4760	\$31.29	3.580	1
PF-5UW	5"	CC4765	35.74	4.580	1
PF-6UW	6"	CC4770	38.22	5.445	1
PF-7UW	7"	CC4780	0.00	6.445	1
PF-8UW	8"	CC4785	47.42	7.445	1
PF-9UW	9"	CC4790	117.22	8.445	1

CYLINDER PARTS			
Part Number	Our Sequence Number	Per Each	Description
PF-19120	CC4695	\$7.30	Bleeder valve for telescopic cylinders

SEAL KITS FOR PERFECTION® TWIN UNDERBODY TELESCOPIC CYLINDERS
For Old Style | For New Style

Part Number	Our Sequence Number	Per Each	Contains	Part Number	Our Sequence Number	Per Each	Contains
MODEL 375							
PF-50494	CC4660	\$31.59	Orings, Backups & Wipers	PF-88799	CC4890	\$56.57	U-seals & Wipers
MODEL 475							
PF-50493	CC4665	43.28	Orings, Backups & Wipers	PF-88800	CC4590	68.48	U-seals & Wipers
MODELS 495-498							
PF-50530	CC4655	52.98	Orings, Backups & Wipers	PF-88801	CC4592	90.45	U-seals & Wipers
MODEL 598							
PF-35	MM26117	135.97	3" to 5" Vee Set & Wipers				

PERFECTION® WIPERS

Part Number	Our Sequence Number	Per Each	Description	Part Number	Our Sequence Number	Per Each	Description
180	483002	\$6.62	2.580" Wiper	185	483010	\$11.28	6.445" Wiper
181	483004	7.64	3.580" Wiper	186	483012	12.05	7.445" Wiper
183	483006	8.65	4.580" Wiper	187	483014	13.78	8.445" Wiper
184	483008	9.61	5.445" Wiper				

PACKING FOR HOIST PISTON CYLINDERS

Part Number	Our Sequence Number	Per Each	I.D. Size	Cylinder Model Number
PF-18274	MM2610	\$6.38	2"	615, 615B, 715, 715B, 715L, 720, 720B, 7020, 725

REPLACEMENT PARTS FOR PERFECTION® PUMPS

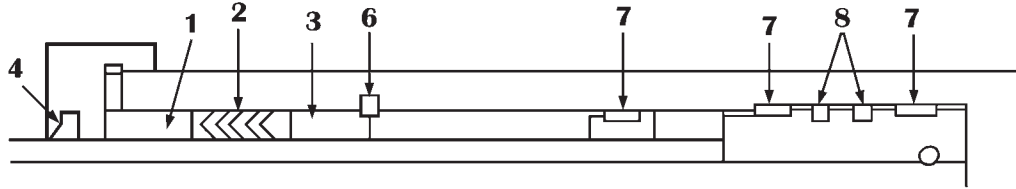
Part Number	Our Sequence Number	Per Each	Seal Size	Description	Qty. Req'd.
PF-75175	MM26107	\$5.63	7/8" X 1-1/4"	75175 Vee Packing for A52427	2
PF-78317+BU	CC4515	17.45	7/8" X 1-1/4"	78317 Seal + 78684 Back Up for A52427	2
PF-81566	MM26110	4.28	3/4" X 1-1/4"	81566 Vee Packing for A85222	2
PF-86081	CC4525	12.49	3/4" X 1-1/4"	86081 Seal for A85222	2
PF-86082	CC4565	29.44	7/8" X 1-1/4"	86082 Seal for A92522 (new A52427)	2

HOW TO IDENTIFY PERFECTION® CYLINDERS

Brass bearings flat top and bottom, one above and one below vee packing except 7" and up stages which have bearing above packing only.
 Internal threaded stops and stages.
 Thick gland nuts, 3/8" spanner holes.
 Big, thick wiper 3/16" to 1/4" wide base X7/16" long.
 Stage outside diameters 2.580", 3.580", 4.580", 5.445", 6.445", and 7.445".
 Uses packing .265" c.s. on 3" and 4" stages and 1/4" on larger stages.
 Numbers stamped at bottom of body near port - example: 74A140 or 74140V.

PLEASE TELL US WHICH SEAL KITS OR SEALS OR SNAP RINGS OR CABLES YOU NEED! SEND US A SAMPLE KIT OR A SAMPLE OR WORN PARTS AND WE WILL SUPPLY THEM. PLEASE GIVE MAKE, MODEL, SERIAL NUMBER, AND APPLICATION. WE CAN SUPPLY SEALS AND PARTS UNDER YOUR MANUFACTURERS PART NUMBER.

All descriptions and numbers are used for reference purposes only.
 We do not imply that any part listed is the product of these manufacturers.



Part Number	Our Sequence Number	Per Each	I.D. Size	Qty. Req'd
TOP BEARING - ITEM NO. 1				
WD-4NGTB	CC4385	\$68.90	3.950"	1
WD-5NGTB	CC4390	78.01	4.950"	1
WD-6NGTB	CC4395	81.60	5.950"	1
WD-7NGTB	CC4400	112.80	6.950"	1
WD-8NGTB	CC4405	141.21	7.950"	1
WD-9NGTB	CC4410	143.14	8.950"	1
VEE SETS WITH WIPERS - ITEM NO. 2 & 4				
WD-3VSW	MM261025	10.31	2.950"	1
WD-4VSW	MM261026	12.36	3.950"	1
WD-5VSW	MM261027	15.25	4.950"	1
WD-6VSW	MM261028	18.32	5.950"	1
WD-9VSW	CC4445	120.39	8.950"	1
BOTTOM BEARINGS - ITEM NO. 3				
WD-4NGBB	CC4357	68.90	3.950"	1
WD-5NGBB	CC4360	78.01	4.950"	1
WD-6NGBB	CC4365	111.97	5.950"	1
WD-7NGBB	CC4370	112.80	6.950"	1
WD-8NGBB	CC4375	141.21	7.950"	1
WD-9NGBB	CC4380	133.39	8.950"	1

Part Number	Our Sequence Number	Per Each	Size	Qty. Req'd
GUIDE BEARINGS - ITEM NO. 7				
WD310-737-40	CC4330	\$6.41	4.50" O.D.	3
WD310-737-50	CC4335	6.41	5.50" O.D.	3
WD310-764-60	CC4340	8.40	6.50" O.D.	3
WD310-764-70	CC4345	10.92	7.50" O.D.	3
WD310-764-80	CC4350	14.45	8.50" O.D.	3
WD310-764-90	CC4355	17.17	9.50" O.D.	3
TOP SNAP RINGS - ITEM NO. 6				
WD560-009-50	CC4275	66.55	5.50" I.D.	1
WD560-009-90	CC4295	109.11	9.50" I.D.	1
PISTON RINGS - ITEM NO. 8				
WD505-066-17	CC4240	16.41	4.50" O.D.	2
WD505-066-24	CC4245	22.87	5.50" O.D.	2
WD505-066-28	CC4250	26.45	6.50" O.D.	2
WD505-066-35	CC4255	56.47	7.50" O.D.	2
WD505-066-38	CC4260	62.97	8.50" O.D.	2
WD505-066-40	CC4265	194.80	9.50" O.D.	2

WARD® WIPERS

Part Number	Our Sequence Number	Per Each	Description	Part Number	Our Sequence Number	Per Each	Description
WD-3W	482890	\$7.88	2.950" Wiper	WD-7W	482898	\$11.46	6.950" Wiper
WD-4W	482892	7.88	3.950" Wiper	WD-8W	482900	12.89	7.950" Wiper
WD-5W	482894	9.67	4.950" Wiper	WD-9W	482902	14.86	8.950" Wiper
WD-6W	482896	10.56	5.950" Wiper				

HOW TO IDENTIFY WARD® CYLINDERS

Bearings are made from nylon reinforced with steel core.
 Bearing above packing is flat, both ends. Bearing below packing has step cut on bottom.
 1/4" square snap ring Internal stop, some very recent cylinders had 1/4" x 3/8" snap ring.
 Square slots cast in gland nut o.d.
 Ear cast on back side of gland nut for set screw.
 Uses .275" c.s. packing
 Uses nylon wear rings as piston guides.
 Numbers stamped on steady rest area towards live end of body-example: 5000-4-0178.

SEAL KITS FOR BAKER® LIFT TRUCKS BY APPLICATION

Application	S/N Range	Bore Size	Rod Diam.	Part Number	Our Sequence Number	Per Each	Cylinder Reference Number
BAKER LIFT TRUCK							
Cylinder	5.0	4.046		BAK-105147	CH1610	\$239.76	103102,103662,104178,104377,104516,104604,104617,105163,107695,107696,109823,112600,113111,113638,114392,115237,115656
Cylinder	3.5	3.0		BAK-105235	CH1620	66.94	9025GW, 100227-230, 102019-20, 102064-67, 102506-08, 108971-974, 110648-657, 110899, 111843, 112419, 112832, 113251
Cylinder	4.5	4.0		BAK-106657	CH1660	122.15	294U7774XC, 9025D
Cylinder	3.0	2.5		BAK-109009	CH1670	79.80	106474-76, 106744, 107794-96, 108625, 108656, 109631-641, 110095, 110947-949, 111059-061, 112061, 112562-63, 112658, 113194, 112962, 113388, 113434, 114040, 114141, 114283, 114889, 114954, 115956, 116318
Cylinder	4.0	1.75		BAK-3001Y10	M07030	16.11	233HR7774ZC, 9025BE, 9025BF, 9025BL, 9025EW, 9025FH, 9025FT

SEAL KITS FOR HYSTER® EQUIPMENT BY APPLICATION

Application	S/N Range	Bore Size	Rod Diam.	Part Number	Our Sequence Number	Per Each	Rod Wiper	Piston Seal	Rod Seal	Hyster-Number for Reference	Remarks
HYSTER LIFT TRUCK											
Cylinder		3.0	1.25	HYS-170881	MM1710	\$37.65	MC	VEE	VEE	170881	
		3.5	1.5	HYS-226074	MM1720	17.92	VS	VEE	POL	22074	
		6.0	4.25	HYS-250550	MM1730	57.49	VS	POL	POL	250550	
		3.0	1.25	HYS-281822	MM1740	8.84	VS	STFO	POL	281822	
		3.5	2.25	HYS-281859	MM1750	29.68	VS	STFO	POL	281859	

We do not imply that any part listed is the product of these manufacturers. All descriptions and numbers are used for reference purposes only.



SEAL KITS FOR CAT-TOWMOTOR® EQUIPMENT BY APPLICATION



Application	S/N Range	Bore Size	Rod Diam.	Part Number	Our Sequence Number	Per Each	Rod Wiper	Piston Seal	Rod Seal	Caterpillar-Towmotor Number	Remarks
LIFT TRUCK											
P/S		2.5	1.0	TM-375427	CH0810	\$22.98	VS	P3TS	USL		
Tilt Cyl.		3.5	1.5	TM-388594-6	CH0820	54.81	MC	STFO	USL		T60C
		3.0	1.25	TM-396845	MM3212	13.22	VS	P3TS	VEE	396845	
		5.0	2.0	TM-694526	CH1070	131.06	VS	USL	USL	694526	V200
		6.0	2.5	TM-694527	CH1080	144.90	VS	USL	USL	694527	V300B
Lift Cyl. Single		3.0	1.25	TM-912067	CH1100	42.04	MC	STFO	USL	912067	
		4.025	3.0	TM-396743	CH0830	121.38	MC	VEE	ORB	396743	
Lift Cyl. Triple	See Remarks	3.525	3.0	TM-396747	CH0860	74.80	MC	VEE	USL	396747	
				TM-396749	CH0880	317.67	MC	ORB	USL	396749	3-Stage 3.125, 4.375, 5
				TM-396758	CH0960	162.03	MC	WR	USL	396758	3-Stage 1.875, 2.75, 3.625
				TM-396759	CH0970	203.15	VS	VEE	ORB	396759	3-Stage 2.70, 3.45, 5.7
				TM-396760	CH0980	157.99	VS	VEE	ORB	396760	3-Stage 2.2, 2.95, 4.7

Application	Bore Size	Rod Diam.	Part Number	Our Sequence Number	Per Each
CLARK LIFT TRUCK®					
Lift Cylinder	2.25	2.0	CLK-1811107	MM0503	\$6.52
	2.5	2.25	CLK-1811108	MM0505	7.19
			CLK-1811127	CH0180	294.11
			CLK-1811130	CH0210	171.72
			CLK-1811132	CH0230	156.54
	3.25	2.5	CLK-1811154	CH0510	38.43
	3.0	2.5	CLK-1811155	CH0520	36.27
			CLK-1811159	CH0530	207.73
			CLK-1811160	CH0540	155.43
			CLK-1811161	CH0550	209.32
			CLK-1811162	CH0560	222.67
			CLK-1811164	CH0570	138.82
	4.0	3.25	CLK-1830352	CH0680	53.32
	3.0	2.5	CLK-1830360	CH0700	40.39
2.5	2.25	CLK-1830361	CH0710	44.42	

Application	Bore Size	Rod Diam.	Part Number	Our Sequence Number	Per Each
GROVE CRANE®					
Lift Cylinder	3.0	1.75	GC9752100072	CC0900	\$115.03

All descriptions and numbers are used for reference purposes only. We do not imply that any part listed is the product of these manufacturers.

MOST COMMON CYLINDER PART NAMES

- END CAP (BLIND END)
- EYE
- FLANGE
- HEAD BOLT
- HEAD (GLAND)
- HINGE PIN SEAL
- LOCK NUT
- PISTON
- ROD
- THREADED CROWN
- TRUNNION
- TUBE (BARREL, BORE)
- WELDED JOINT

