

Cylinder Qty Discs:
 2% for 2 pieces
 5% for 5 pieces
 10% for 10 pieces



Double Ported
 NPFT Inline Ports



These top 10 cylinders listed are all ASAE
 The remainder of the cylinders are all NON-ASAE

TL SERIES 2500 PSI							WX SERIES 3000 PSI					
Size Inches Bore & Stroke	Wt.	Rod Diam.	Pin to Pin Center Retracted	Cylinder Number	Our Sequence Number	Per Each	Size Inches Bore & Stroke	Rod Diam.	Pin to Pin Center Retracted	Cylinder Number	Our Sequence Number	Per Each
2 x 8	20	1.13	20-1/4	20TL08-112	097805	\$128.38	2-1/2 x 8	1.25	16	25WX08-125	098300	\$215.16
2-1/2 x 8	22	1.13	20-1/4	25TL08-112	097810	135.61	2-1/2 x 12	1.25	20	25WX12-125	098302	225.82
3 x 8	28	1.25	20-1/4	30TL08-125	097815	146.19	2-1/2 x 16	1.25	24	25WX16-125	098304	248.07
3-1/2 x 8	36	1.25	20-1/4	35TL08-125	097820	168.79	2-1/2 x 20	1.25	28	25WX20-125	098306	248.82
4 x 8	43	1.25	20-1/4	40TL08-125	097825	196.27	2-1/2 x 24	1.25	32	25WX24-125	098308	259.67
5 x 8	71	1.50	20-1/4	50TL08-150	097830	366.33	3 x 8	1.50	16	30WX08-150	098310	239.86
3 x 16	41	1.50	31-1/2	30TL16-150	097835	204.77	3 x 12	1.50	20	30WX12-150	098312	260.14
3-1/2 x 16	51	1.50	31-1/2	35TL16-150	097840	255.76	3 x 16	1.50	24	30WX16-150	098314	282.86
4 x 16	59	1.75	31-1/2	40TL16-175	097845	299.61	3 x 20	1.50	28	30WX20-150	098316	315.77
5 x 16	100	2.00	31-1/2	50TL16-200	097850	485.13	3 x 24	1.50	32	30WX24-150	098318	323.12
2 x 4	17	1.13	14-1/4	20TL04-112	097900	0.00	3-1/2 x 8	1.75	16	35WX08-150	098320	276.17
2 x 6	18	1.13	16-1/4	20TL06-112	097905	140.41	3-1/2 x 12	1.75	20	35WX12-150	098322	296.06
2 x 10	21	1.13	20-1/4	20TL10-112	097910	146.98	3-1/2 x 16	1.75	24	35WX16-150	098324	329.34
2 x 12	22	1.13	22-1/4	20TL12-112	097915	152.07	3-1/2 x 20	1.75	28	35WX20-150	098326	335.94
2 x 14	24	1.13	24-1/4	20TL14-112	097920	158.44	3-1/2 x 24	1.75	32	35WX24-150	098328	358.76
2 x 16	25	1.13	26-1/4	20TL16-112	097922	163.74	4 x 8	2.00	16	40WX08-150	098330	347.92
2 x 18	26	1.13	28-1/4	20TL18-112	097925	172.75	4 x 12	2.00	20	40WX12-150	098332	356.21
2 x 20	28	1.13	30-1/4	20TL20-112	097930	184.31	4 x 16	2.00	24	40WX16-150	098334	375.92
2 x 24	30	1.13	34-1/4	20TL24-112	097935	211.36	4 x 20	2.00	28	40WX20-150	098336	395.34
2 x 30	34	1.13	40-1/4	20TL30-112	097940	251.53	4 x 24	2.00	32	40WX24-150	098338	411.65
2-1/2 x 10	23	1.13	20-1/4	25TL10-112	097945	155.80						
2-1/2 x 12	24	1.13	22-1/4	25TL12-112	097950	162.36						
2-1/2 x 14	26	1.13	24-1/4	25TL14-112	097955	171.28						
2-1/2 x 18	31	1.25	28-1/4	25TL18-125	097960	188.33						
2-1/2 x 20	32	1.25	30-1/4	25TL20-125	097965	195.87						
2-1/2 x 24	35	1.25	34-1/4	25TL24-125	097970	216.55						
2-1/2 x 30	40	1.25	40-1/4	25TL30-125	097975	253.98						
3 x 10	30	1.25	20-1/4	30TL10-125	097980	166.48						
3 x 12	32	1.25	22-1/4	30TL12-125	097985	180.59						
3 x 14	34	1.25	24-1/4	30TL14-125	097990	190.88						
3 x 16	36	1.25	26-1/4	30TL16-125	097995	201.07						
3 x 18	39	1.25	28-1/4	30TL18-125	098000	210.18						
3 x 20	41	1.25	30-1/4	30TL20-125	098005	220.27						
3 x 24	48	1.50	34-1/4	30TL24-150	098010	247.61						
3 x 30	55	1.50	40-1/4	30TL30-150	098015	306.89						
3 x 36	62	1.50	46-1/4	30TL36-150	098020	349.22						
3-1/2 x 10	38	1.25	20-1/4	35TL10-125	098025	198.62						
3-1/2 x 12	41	1.25	22-1/4	35TL12-125	098030	207.44						
3-1/2 x 14	43	1.25	24-1/4	35TL14-125	098035	217.73						
3-1/2 x 16	46	1.25	26-1/4	35TL16-125	098040	228.01						
3-1/2 x 18	51	1.25	28-1/4	35TL18-125	098045	251.53						
3-1/2 x 20	54	1.50	30-1/4	35TL20-150	098050	261.43						
3-1/2 x 24	59	1.50	34-1/4	35TL24-150	098055	285.04						
3-1/2 x 30	67	1.50	40-1/4	35TL30-150	098060	345.30						
3-1/2 x 36	75	1.50	46-1/4	35TL36-150	098065	377.84						
4 x 10	45	1.25	20-1/4	40TL10-125	098070	233.50						
4 x 12	48	1.25	22-1/4	40TL12-125	098075	245.16						
4 x 14	50	1.25	24-1/4	40TL14-125	098080	262.90						
4 x 16	53	1.25	26-1/4	40TL16-125	098085	280.93						
4 x 18	59	1.50	28-1/4	40TL18-150	098090	305.52						
4 x 20	62	1.50	30-1/4	40TL20-150	098095	315.61						
4 x 24	74	1.75	34-1/4	40TL24-175	098100	356.87						
4 x 30	91	2.00	40-1/4	40TL30-200	098105	428.00						
4 x 36	102	2.00	46-1/4	40TL36-200	098110	488.66						
4 x 48	125	2.00	58-1/4	40TL48-200	098115	600.75						
5 x 10	75	1.50	22-1/4	50TL10-150	098120	415.17						
5 x 12	87	2.00	24-1/4	50TL12-200	098125	447.41						
5 x 14	92	2.00	26-1/4	50TL14-200	098130	477.88						
5 x 16	96	2.00	28-1/4	50TL16-200	098135	508.06						
5 x 18	101	2.00	30-1/4	50TL18-200	098140	540.00						
5 x 20	106	2.00	32-1/4	50TL20-200	098145	574.89						
5 x 24	116	2.00	36-1/4	50TL24-200	098150	614.96						
5 x 30	131	2.00	42-1/4	50TL30-200	098155	671.70						
5 x 36	145	2.00	48-1/4	50TL36-200	098160	741.17						
							3 x 8	1.25	20-1/4	30TP08-125	098200	\$248.16
							3-1/4 x 8	1.25	20-1/4	32TP08-125	098205	261.65
							3-1/2 x 8	1.25	20-1/4	35TP08-125	098210	264.00
							3-3/4 x 8	1.37	20-1/4	37TP08-137	098215	312.75
							4 x 8	1.37	20-1/4	40TP08-137	098220	320.10
							4-1/4 x 8	1.50	20-1/4	42TP08-150	098225	407.60
							4-1/2 x 8	1.50	20-1/4	45TP08-150	098230	413.73
							4-3/4 x 8	1.50	20-1/4	47TP08-150	098235	495.29
							5 x 8	1.50	20-1/4	50TP08-150	098240	502.55



Model Number Example
 20 TL 08 - 112
 Bore (inches) x .1
 TL 2500 PSI
 Stroke (inches)
 Rod Diameter (inches) x .01

REPHASING TYPE
 (WITHOUT STROKE CONTROL)

25 piece minimum order on all other size of rephasing cylinders.

To calculate extended pin to pin center add stroke to retracted dimension All cylinders have 1" pin diam. except ASAE TL16's which are 1-1/4"

SEAL KITS FOR TIE ROD CYLINDERS

Kit Number	Bore Size	Rod Diam.	Our Sequence Number	Per Each	Rod Wiper	Piston Seal	Rod Seal	Kit Number	Bore Size	Rod Diam.	Our Sequence Number	Per Each	Rod Wiper	Piston Seal	Rod Seal
639572TL	2.0	1.12	G08400	\$11.27	MC	OR2B	USL	639578TL	3.5	1.50	G08412	\$14.40	MC	OR2B	USL
639573TL	2.5	1.12	G08402	12.18	MC	OR2B	USL	639580TL	4.0	1.50	G08416	15.87	MC	OR2B	USL
639575TL	3.0	1.25	G08406	13.51	MC	OR2B	USL								

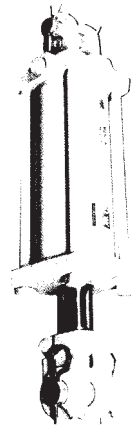
PRINCE 16", except 33616, 10716, 10816, 5416, 8316, 5516, and 5616 are 31-1/2" centers ASAE standard length.
 PRINCE 33616, 10716, and 10816 cylinders are 26-1/4" centers short length.

Implement	Recommended Minimum Bore
2 bottom plow	3"
3 bottom plow	3"
4 bottom plow	3-1/2"
5 bottom plow	4"
10' disk	3"
12' disk	3"
14' disk	3-1/2"
10' chisel	3"
14' chisel	3-1/2"
16' chisel	4"
10' one-way	3"
12' one-way	3-1/2"
15' one-way	4"

Chromed piston rod will operate at full pressure through 16" stroke. For longer than 16" stroke, check with Prince engineering department.



PRINCE - Tie Rod Type
 3/4" O-Ring Ports &
 1" Clevis Pins; except,
 9708, 9716, 9724
 have 1-1/4" Clevis Pins &
 5" have 7/8" O-Ring Ports
 & 1-1/4" Clevis Pins



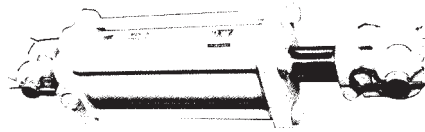
PRINCE - Welded Type
 1/2" Ports &
 1" Clevis Pins
 Except 1-1/2" have
 3/4" Clevis Pins

Size Inches Bore x Stroke	Distance Inches Center to Center	Clev. Pins Cylinder Retracted	Wt. Lbs.	Max. Pressure - 2500 PSI TIE ROD TYPE				Max. Pressure - 3000 PSI TIE ROD TYPE				Max. Pressure - 3000 PSI WELDED TYPE			
				Prince Tie-Rod Cylinder Number	Shaft Diam. Inches	Our Sequence Number	Per Each	Prince Tie-Rod Cylinder Number	Shaft Diam. Inches	Our Sequence Number	Per Each	Prince Welded Cylinder Number	Shaft Diam. Inches	Our Sequence Number	Per Each
1-1/2x8	20-1/4	13		-----	--		\$....	-----	--		\$....	19408*	3/4	103789	\$291.17
1-1/2x10	20-1/4	14		-----	--		-----	--		19410*	3/4	103790	298.38
1-1/2x12	22-1/4	16		-----	--		-----	--		19412*	3/4	103791	309.41
1-1/2x16	31-1/2	20		-----	--		-----	--		19416*	3/4	103792	335.61
2 x 4	14-1/2	18		8404	1	100737	198.97	B200040ABAAA07B	1	100739	234.25	-----	--	
2 x 6	16-1/4	19		8406	1	100746	203.38	B200060ABAAA07B	1	100748	236.01	-----	--	
2 x 8	20-1/4	20		8408*	1	100756	193.35	A200080ABAAA07B	1-1/8	100758	220.91	42008	1-1/8	103793	295.62
2 x 10	20-1/4	21		8410	1	100800	214.63	B200100ABAAA07B	1-1/8	100810	247.37	42010	1-1/8	103794	304.22
2 x 12	22-1/4	25		-----	--		B200120ABAAA07B	1-1/8	100868	250.45	42012	1-1/8	103795	312.49
2 x 14	24-1/4	26		-----	--		B200140ABAAA07B	1-1/8	100930	255.63	-----	--	
2 x 16	31-1/2	28		-----	--		A200160ABAAA07B	1-1/8	100994	246.34	42016	1-1/8	103796	338.79
2 x 18	28-1/4	29		-----	--		B200180ABAAA07B	1-1/8	101058	273.82	-----	--	
2 x 20	30-1/4	31		-----	--		B200200ABAAA07B	1-1/8	101124	283.08	42020	1-1/8	103797	354.18
2 x 24	34-1/4	35		-----	--		B200240ABAAA07B	1-1/8	101186	301.38	42024	1-1/8	103798	371.36
2 x 30	40-1/4	39		-----	--		B200300ABAAA07B	1-1/8	101196	328.83	-----	--	
2-1/2 x 6	16-1/4	22		7006	1-1/8	101230	220.80	B250060ABAAA07B	1-1/8	101232	255.74	-----	--	
2-1/2 x 8	20-1/4	23		7008+	1-1/8	101248	206.57	-----	--		42508	1-1/4	103799	311.11
2-1/2 x 8	20-1/4	25		-----	--		A250080ABAAA07B	1-1/4	101254	240.95	-----	--	
2-1/2x10	20-1/4	26		-----	--		B250100ABAAA07B	1-1/4	101318	271.29	42510	1-1/4	103800	319.91
2-1/2x12	22-1/4	27		-----	--		B250120ABAAA07B	1-1/4	101380	283.30	42512	1-1/4	103801	329.35
2-1/2x14	24-1/4	29		-----	--		B250140ABAAA07B	1-1/4	101388	295.32	-----	--	
2-1/2x16	31-1/2	33		-----	--		A250160ABAAA07B	1-1/4	101444	285.50	42516	1-1/4	103802	356.83
2-1/2x18	28-1/4	34		-----	--		B250180ABAAA07B	1-1/4	101510	319.57	-----	--	
2-1/2x20	30-1/4	36		-----	--		B250200ABAAA07B	1-1/4	101570	331.59	42520	1-1/4	103803	375.71
2-1/2x24	34-1/4	39		-----	--		B250240ABAAA07B	1-1/4	101634	355.84	42524	1-1/4	103804	394.80
2-1/2x30	40-1/4	44		-----	--		B250300ABAAA07B	1-1/4	101644	391.77	-----	--	
3 x 6	16-1/4	24		7106	1-1/8	101652	243.84	B300060ABAAA07B	1-1/8	101654	260.70	-----	--	
3 x 8	20-1/4	26		7108+	1-1/8	101696	227.83	-----	--		43008	1-3/8	103805	343.99
3 x 8	20-1/4	29		-----	--		A300080ABAAA07B	1-3/8	101700	253.25	-----	--	
3 x 10	20-1/4	32		-----	--		B300100ABAAA07B	1-3/8	101823	286.61	43010	1-3/8	103806	362.24
3 x 12	22-1/4	33		-----	--		B300120ABAAA07B	1-3/8	101828	300.50	43012	1-3/8	103807	373.16
3 x 14	24-1/4	35		-----	--		B300140ABAAA07B	1-3/8	101890	314.17	-----	--	
3 x 16	31-1/2	39		-----	--		A300160ABAAA07B	1-3/8	101956	304.62	43016	1-3/8	103808	394.16
3 x 16	26-1/4	29		-----	--		B300160ABAAA07B	1-3/8	101920	274.21	-----	--	
3 x 18	28-1/4	42		-----	--		B300180ABAAA07B	1-3/8	102020	341.95	-----	--	
3 x 20	30-1/4	45		-----	--		B300200ABAAA07B	1-3/8	102086	355.95	43020	1-3/8	103809	419.73
3 x 24	34-1/4	47		-----	--		B300240ABAAA07B	1-3/8	102148	390.23	43024	1-3/8	103810	467.35
3 x 30	40-1/4	63		-----	--		B300300ABAAA07B	1-3/8	102212	444.25	-----	--	
3 x 36	46-1/2	61		-----	--		B300360ABAAA07B	1-3/8	102276	498.48	-----	--	
3 x 48	58-1/4	66		-----	--		B300480ABAAA07B	1-3/8	102286	614.12	-----	--	
3-1/2x8	20-1/4	31		7208A+	1-1/8	102336	242.17	A350080ABAAA07B	1-3/8	102342	274.71	43508	1-1/2	103811	404.67
3-1/2x10	20-1/4	36		-----	--		B350100ABAAA07B	1-3/8	102410	312.18	43510	1-1/2	103812	422.17
3-1/2x12	22-1/4	38		-----	--		B350120ABAAA07B	1-3/8	102468	330.15	43512	1-1/2	103813	439.56

Qty. Disc: 2 pieces 2%, 5 pieces 5%, 10 pieces 10%
 * To convert stroke control, install the PMSC-1 Stroke Control Assembly.

*Uses Formed Clevis & 3/4" Pin
 + To convert stroke control, install the PMSC-8 Stroke Control Assembly.

Chromed piston rod will operate at full pressure through 16" stroke. For longer than 16" stroke, check with Prince engineering department.



Size Inches Bore x Stroke	Distance Center to Center Clevis Pins Cylinder Retracted	Wt. Lbs.	Max. Pressure - 2500 PSI TIE ROD TYPE				Max. Pressure - 3000 PSI TIE ROD TYPE				Max. Pressure - 3000 PSI WELDED TYPE			
			Prince Tie-Rod Cylinder Number	Shaft Diam. Inches	Our Sequence Number	Per Each	Prince Tie-Rod Cylinder Number	Shaft Diam. Inches	Our Sequence Number	Per Each	Prince Welded Cylinder Number	Shaft Diam. Inches	Our Sequence Number	Per Each
3-1/2x14	24-1/4	41	-----	--										
3-1/2x16	31-1/2	46	-----	--		B350140ABAAA07B	1-3/8	102478	\$347.68	-----	--			
3-1/2x16	26-1/4	33	-----	--		A350160ABAAA07B	1-3/8	102532	339.91	43516	1-1/2	103814	488.04	
3-1/2x18	28-1/4	47	-----	--		B350160ABAAA07B	1-3/8	102526	311.74	-----	--			
3-1/2x20	30-1/4	49	-----	--		B350180ABAAA07B	1-3/8	102596	382.73	-----	--			
3-1/2x24	34-1/4	54	-----	--		B350200ABAAA07B	1-3/8	102660	400.37	43520	1-1/2	103815	522.09	
3-1/2x30	40-1/4	64	-----	--		B350240ABAAA07B	1-3/8	102726	435.65	43524	1-1/2	103816	560.38	
3-1/2x36	46-1/4	66	-----	--		B350300ABAAA07B	1-3/8	102736	501.02	-----	--			
3-1/2x48	58-1/4	73	-----	--		B350360ABAAA07B	1-3/8	102788	566.05	-----	--			
4 x 8	20-1/4	42	8608*	1-1/2	102848	317.84	-----	--		-----	--			
4 x 8	20-1/4	45	-----	--		A400080ABAAA07B	1-3/4	102906	374.69	44008	1-3/4	103817	480.61	
4 x 8	20-1/4	48	-----	--		C400080ABDDA03B	2	102903	406.73	-----	--			
4 x 10	20-1/4	45	8610	1-1/2	102912	355.29	-----	--		44010	1-3/4	103818	501.09	
4 x 10	20-1/4	48	-----	--		B400100ABAAA07B	1-3/4	102922	423.85	-----	--			
4 x 12	22-1/4	49	-----	--		B400120ABAAA07B	1-3/4	102984	445.79	44012	1-3/4	103819	521.45	
4 x 14	24-1/4	51	-----	--		B400140ABAAA07B	1-3/4	103056	467.51	-----	--			
4 x 16	31-1/2	61	-----	--		A400160ABACA07B	1-3/4	103140	455.04	44016	1-3/4	103820	577.78	
4 x 16	26-1/4	48	-----	--		B400160ABACA07B	1-3/4	103137	455.04	-----	--			
4 x 16	31-1/2	64	-----	--		C400160ABDDA07B	2	103139	487.18	-----	--			
4 x 18	28-1/4	62	-----	--		B400180ABACA07B	1-3/4	103150	511.16	-----	--			
4 x 20	30-1/4	72	-----	--		B400200ABACA07B	1-3/4	103174	532.98	44020	1-3/4	103821	619.46	
4 x 24	34-1/4	74	-----	--		B400240ABACA07B	1-3/4	103240	563.63	44024	1-3/4	103822	661.15	
4 x 24	36-1/4	77	-----	--		C400240ABDDA03B	2	103235	603.53	-----	--			
4 x 30	40-1/4	77	-----	--		B400300ABACA07B	1-3/4	103300	628.89	44030	1-3/4	103823	723.94	
4 x 36	46-1/4	83	-----	--		B400360ABACA07B	1-3/4	103366	694.37	-----	--			
4 x 48	58-1/4	109	-----	--		B400480ABACA07B	1-3/4	103430	825.00	-----	--			
5 x 8	20-1/4	64	8208	1-3/4	103486	448.64	-----	--		-----	--			
5 x 8	20-1/4	67	-----	--		B500080ACDDA07B	2	103490	519.83	-----	--			
5 x 10	22-1/4	67	8210	1-3/4	103496	513.14	-----	--		-----	--			
5 x 12	24-1/4	75	-----	--		B500120ACDDA07B	2	103499	612.57	-----	--			
5 x 14	26-1/4	80	9514	2	103500	433.11	-----	--		-----	--			
5 x 16	31-1/2	84	-----	--		B500140ACDDA07B	2	103510	637.27	-----	--			
5 x 18	30-1/4	90	-----	--		A500160ACDDA07B	2	103521	618.18	-----	--			
5 x 20	32-1/4	95	-----	--		B500180ACDDA07B	2	103522	686.43	-----	--			
5 x 24	36-1/4	104	-----	--		B500200ACDDA07B	2	103524	711.01	-----	--			
5 x 30	42-1/4	108	-----	--		B500240ACDDA07B	2	103528	744.75	-----	--			
5 x 36	48-1/4	118	-----	--		B500300ACDDA07B	2	103534	822.24	-----	--			
5 x 48	60-1/4	161	-----	--		B500360ACDDA07B	2	103540	904.48	-----	--			
5 x 60	72-1/4	173	9560	2	103550	1136.52	-----	--		-----	--			

*To convert stroke control, install the PMSC-3 Stroke Control Assembly. + To convert stroke control, install the PMSC-8 Stroke Control Assembly.



PRINCE
Welded Type Crosstube & Pinhole
Max. Pressure 2500 PSI
2-1/2" - 3/8" Ports & 3/4" Pinholes
3" & 3-1/2" - 1/2" Ports & 1" Pinholes
4" - 1/2" Ports & 1-1/4" Pinholes

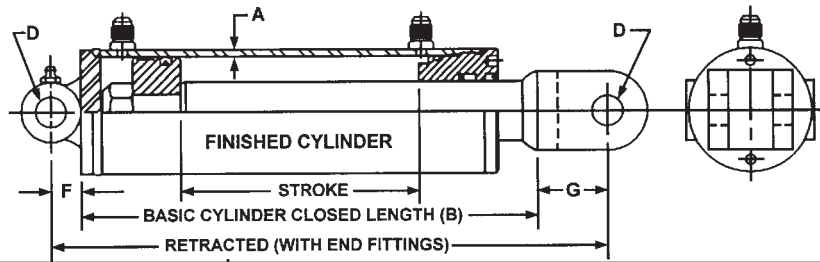
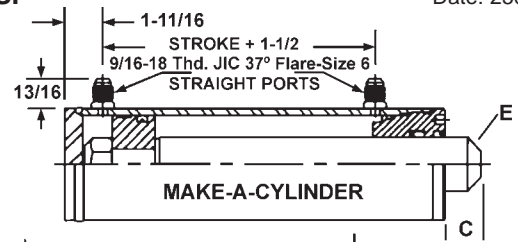
CROSS TUBE
SAME LENGTH
AS ROD O.D.

Max. Pressure - 2500 PSI WELDED TYPE							Max. Pressure - 2500 PSI WELDED TYPE						
Size Inches Bore x Stroke	Wt. Lbs.	Prince Welded Cross-tube Cylinder Number	Retracted Pinhole to Pinhole Dist. Inches	Shaft Diam. Inches	Our Sequence Number	Per Each	Size Inches Bore x Stroke	Wt. Lbs.	Prince Welded Cross-tube Cylinder Number	Retracted Pinhole to Pinhole Dist. Inches	Shaft Diam. Inches	Our Sequence Number	Per Each
2-1/2 x 8	17	5408	16	1-3/8	103619	\$267.83	3-1/2x16	34	5516	24	1-1/2	103644	\$424.93
2-1/2x12	20	5412	20	1-3/8	103621	281.41	3-1/2x20	38	5520	28	1-1/2	103645	451.66
2-1/2x16	23	5416	24	1-3/8	103622	295.94	3-1/2x24	44	5524	32	1-1/2	103646	462.48
2-1/2x20	27	5420	28	1-3/8	103623	309.63	3-1/2x30	48	5530	38	1-1/2	103647	501.83
2-1/2x24	30	5424	32	1-3/8	103624	322.78	3-1/2x32	52	5532	40	1-1/2	103648	514.56
2-1/2x30	35	5430	38	1-3/8	103625	342.83	3-1/2x36	56	5536	44	1-1/2	103649	540.54
2-1/2x32	41	5432	40	1-3/8	103626	354.60	3-1/2x40	60	5540	48	1-1/2	103650	566.43
2-1/2x36	44	5436	44	1-3/8	103627	369.34	3-1/2x42	64	5542	50	1-1/2	103651	579.37
2-1/2x42	47	5442	50	1-3/8	103628	426.41	3-1/2x48	70	5548	56	1-1/2	103652	700.50
3 x 8	22	8308	16	1-1/2	103630	298.38	4 x 8	35	5608	17	2	103654	467.67
3 x 12	26	8312	20	1-1/2	103631	323.52	4 x 12	41	5612	21	2	103655	478.70
3 x 16	31	8316	24	1-1/2	103632	351.74	4 x 16	48	5616	25	2	103656	505.33
3 x 20	35	8320	28	1-1/2	103633	376.77	4 x 20	56	5620	29	2	103657	531.53
3 x 24	41	8324	32	1-1/2	103634	401.70	4 x 24	62	5624	33	2	103658	553.49
3 x 30	46	8330	38	1-1/2	103635	438.29	4 x 30	72	5630	39	2	103659	595.07
3 x 32	48	8332	40	1-1/2	103636	450.17	4 x 32	74	5632	41	2	103660	645.45
3 x 36	52	8336	44	1-1/2	103637	474.67	4 x 36	80	5636	45	2	103661	665.71
3 x 40	56	8340	48	1-1/2	103638	486.87	4 x 40	85	5640	49	2	103662	712.59
3 x 42	59	8342	50	1-1/2	103639	498.96	4 x 42	92	5642	51	2	103663	725.22
3 x 48	65	8348	56	1-1/2	103640	545.19	4 x 48	100	5648	57	2	103664	760.22
3-1/2x8	26	5508	16	1-1/2	103642	371.36	4 x 60	120	5660	69	2	103665	887.51
3-1/2x12	29	5512	20	1-1/2	103643	398.09							

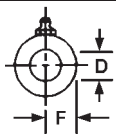
FEATURES:

- Honed tubing
- Chromed, ground and polished rod
- Ductile iron piston and gland
- Optional end fittings available
- Urethane u-cup and wiper on shaft
- Crown seal standard on piston
- Mylar wear ring on piston
- Gland is threaded
- Gloss black color
- 3000 PSI threaded gland

Basic Cylinder Only
Listed on following page



Make your own Cylinder
with weld-on accessories
shown on this page

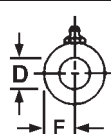


BASE END FITTINGS WELD-ON

D = .760
Pinhole

BASE END CROSSTUBE

Model	F	Length	Part Number	Our Sequence Number	Per Each
F175	3/4	2-1/2	210300216	104160	\$35.40
F200	3/4	2-3/4	210300215	104159	30.53
F225	3/4	3	210300214	104158	17.48
F250	3/4	3-1/4	210300213	104157	26.55
F275	3/4	3-1/2	210300210	104155	32.42

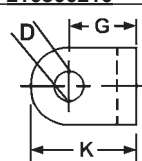
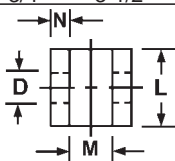


ROD END FITTINGS WELD-ON

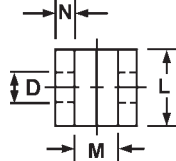
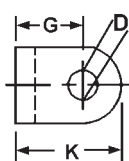
D = .760
Pinhole

ROD END CROSSTUBE

Model	F	Length	Part Number	Our Sequence Number	Per Each
F225	3/4	2	210300211	104156	\$28.24
F250	3/4	2	210300211	104156	28.24
F275	3/4	2	210300211	104156	28.24



D = .760
Pinhole
G = 1-3/4



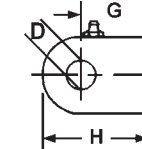
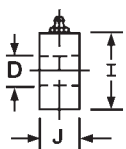
D = .760
Pinhole
G = 1-3/4

BASE END FEMALE CLEVIS - WELD-ON

Model Number	K	L	M	N	Part Number	Our Sequence Number	Per Each
F150, F175	2-5/8	1-1/2	7/8	3/8	110000073	104150	\$14.82
F200, F225	2-3/4	2	1-1/8	1/2	110000071	104151	27.34
F250, F275	2-3/4	2	1-1/8	1/2	110000071	104151	27.34

ROD END FEMALE CLEVIS - WELD-ON

Model Number	K	L	M	N	Part Number	Our Sequence Number	Per Each
F150, F175	2-5/8	1-1/2	7/8	3/8	110000073	104150	\$14.82
F200, F225	2-3/4	2	1-1/8	1/2	110000071	104151	27.34
F250, F275	2-3/4	2	1-1/8	1/2	110000071	104151	27.34



D = .760
Pinhole
G = 1-3/4

BASE END and ROD END MALE TANG - WELD-ON

Model Number	H	I	J	Part Number	Our Sequence Number	Per Each
F150, F175	2-5/8	1-1/2	3/4	130400245	104154	\$44.65
F200, F225	2-3/4	2	1	130400244	104153	47.63
F250, F275	2-7/8	2-1/4	1	130400243	104152	52.90

SEAL KITS FOR MAKE A CYLINDERS

Cylinder Bore Inches	Seal Kit Number	Our Sequence Number	Per Each
1-1/2	PMCK-F150C	732640	\$46.09
1-3/4	PMCK-F175C	732641	50.48
2	PMCK-F200C	732642	50.10
2-1/4	PMCK-F225C	732643	49.35
2-1/2	PMCK-F250C	732644	52.23
2-3/4	PMCK-F275C	732645	50.10

Date: 4000

FITTINGS & ADAPTERS

Description	Anchor Part Number	Our Sequence Number	Per Each
9/16 JIC F x 1/4 F Pipe	4F-6JUFS	899150	\$5.12
9/16 JIC F x 3/8 F Pipe	6F-6JUFS	899152	3.46
9/16 JIC F x 1/2 F Pipe	8F-6JUFS	899158	4.48
	Yankee SYFJFP		
9/16 JIC F x 3/8 F Pipe	6503-6-6	793405	6.36
	Baum 90° Swivel SEMJFJP		
9/16JICM x 9/16JICF 90°	3903-6-6	798525	5.04



WELD-ON COMPONENTS

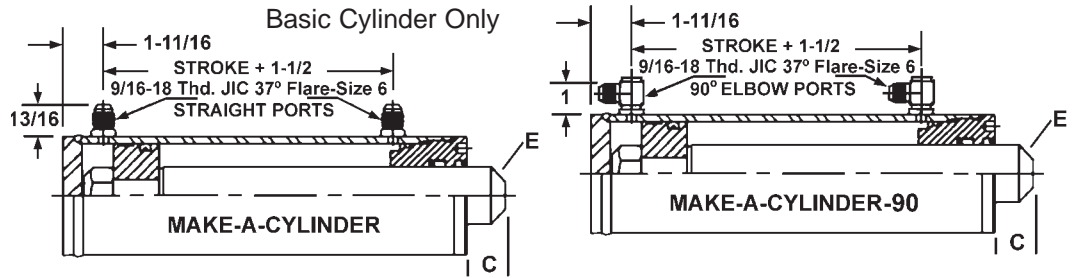
SEAL KITS FOR GLAND END CYLINDERS - Listed on Page M7

Cylinder Bore Inches	Seal Kit Part Number	Our Sequence Number	Per Each	Cylinder Bore Inches	Seal Kit Part Number	Our Sequence Number	Per Each
2	SK-081100006	EE2260	\$1.84	3-1/2	SK-081700007	EE226036	\$2.22
2*	SK-1D1153-3	EE21206	2.77	3-1/2*	SK-1D1159-13	EE212085	3.90
2 Hvy	SK-081100005	EE22602	1.92	4*	SK-1D1161-4	EE212078	2.65
2-1/2*	SK-1D1155-3	EE212065	2.72	4	SK-081900006	EE22604	5.39
2-1/2	SK-081300007	EE226025	1.86	4*	SK-1D1161-13	EE212079	3.92
2-1/2	SK-081300005	EE226026	1.98	4	SK-081900005	EE226045	3.00
3	SK-081500004	EE22603	1.87	4+	SK-081900232	EE22606	6.71
3*	SK-1D1157-13	EE21207	2.54	5	SK-1D1165-4	EE212089	5.04
3	SK-081500007	EE226032	2.13	5	SK-082100004	EE22605	4.13
3*	SK-1D1157-22	EE21208	3.81	5	SK-1D1165-15	EE22607	4.00
3-1/2	SK-081700008	EE226035	1.96	5	SK-082100003	EE21209	11.87
3-1/2*	SK-1D1159-4	EE212075	2.63				

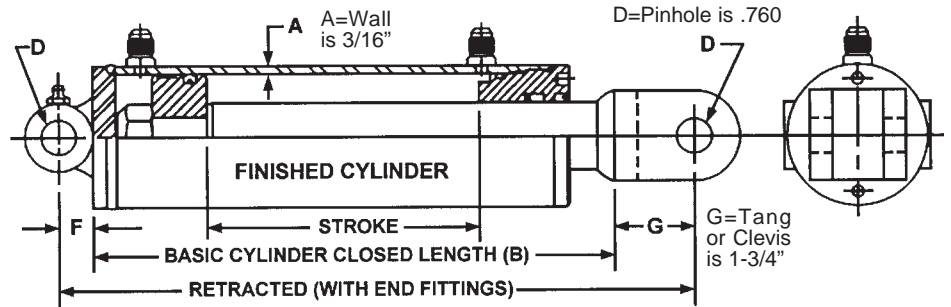
* Fits Cross Cylinders

FEATURES:

- Honed tubing
- Chromed, ground and polished rod
- Ductile iron piston and gland
- Optional end fittings available
- Urethane u-cup and wiper on shaft
- Crown seal standard on piston
- Mylar wear ring on piston
- Gland is threaded
- Gloss black color
- 3000 PSI threaded gland



Make your own Cylinder with weld-on accessories shown on previous page



Cylinder has 9/16" JIC 37° flare male
Straight ports on both ends

Size Inches Bore & Stroke	Wt.	Closed B	Rod Diam.	C	Angle E	Crosstube F	Cylinder Number	Our Sequence Number	Per Each	Cylinder Number	Our Sequence Number	Per Each
1-1/2x4	7	9-1/2	3/4	1	.22	3/4	F150040CSSTNN	104080	\$213.26	-----		\$....
1-1/2x6	8	11-1/2	3/4	1	.22	3/4	F150060CSSTNN	104081	219.20	-----	
1-1/2x8	8	13-1/2	3/4	1	.22	3/4	F150080CSSTNN	104082	225.14	-----	
1-1/2x10	9	15-1/2	3/4	1	.22	3/4	F150100CSSTNN	104083	231.08	-----	
1-1/2x12	10	17-1/2	3/4	1	.22	3/4	F150120CSSTNN	104084	237.02	-----	
1-1/2x16	10	21-1/2	3/4	1	.22	3/4	F150160CSSTNN	104085	248.90	F150160CEETNN-90	104168	225.97
1-1/2x20	12	25-1/2	3/4	1	.22	3/4	F150200CSSTNN	104086	260.78	F150200CEETNN-90	104169	236.86
1-3/4x4	9	9-1/2	1	1	.22	3/4	F175040CSSTNN	104089	192.37	F175040CEETNN-90	104171	197.14
1-3/4x6	10	11-1/2	1	1	.22	3/4	F175060CSSTNN	104090	224.08	F175060CEETNN-90	104172	203.27
1-3/4x8	11	13-1/2	1	1	.22	3/4	F175080CSSTNN	104091	229.17	F175080CEETNN-90	104173	209.40
1-3/4x10	12	15-1/2	1	1	.22	3/4	F175100CSSTNN	104092	210.76	F175100CEETNN-90	104174	215.53
1-3/4x12	13	17-1/2	1	1	.22	3/4	F175120CSSTNN	104093	216.89	F175120CEETNN-90	104175	221.66
1-3/4x20	17	25-1/2	1	1	.22	3/4	F175200CSSTNN	104095	241.40	F175200CEETNN-90	104177	246.17
1-3/4x24	20	29-1/2	1	1	.22	3/4	F175240CSSTNN	104096	253.66	F175240CEETNN-90	104178	258.42
2x4	12	9-1/2	1-1/8	1	.25	3/4	F200040CSSTNN	104098	229.86	-----	
2x6	13	11-1/2	1-1/8	1	.25	3/4	F200060CSSTNN	104099	237.28	F200060CEETNN-90	104180	213.48
2x12	17	17-1/2	1-1/8	1	.25	3/4	-----		F200120CEETNN-90	104183	233.91
2x24	24	29-1/2	1-1/8	1	.25	3/4	-----		F200240CEETNN-90	104186	274.77
2x30	28	35-1/2	1-1/8	1	.25	3/4	F200300CSSTNN	104106	326.38	F200300CEETNN-90	104187	295.20
2-1/4x4	14	9-1/2	1-1/4	1	.25	3/4	F225040CSSTNN	104108	237.87	-----	
2-1/4x6	15	11-1/2	1-1/4	1	.25	3/4	F225060CSSTNN	104109	247.10	F225060CEETNN-90	104189	222.90
2-1/4x8	18	15-1/2	1-1/4	1	.25	3/4	F225100CSSTNN	104111	235.16	F225100CEETNN-90	104191	240.16
2-1/4x12	19	17-1/2	1-1/4	1	.25	3/4	F225120CSSTNN	104112	243.79	F225120CEETNN-90	104192	248.78
2-1/4x20	25	25-1/2	1-1/4	1	.25	3/4	F225200CSSTNN	104114	278.29	-----	
2-1/4x24	28	29-1/2	1-1/4	1	.25	3/4	F225240CSSTNN	104115	295.54	-----	
2-1/4x30	33	35-1/2	1-1/4	1	.25	3/4	F225300CSSTNN	104116	321.42	F225300CEETNN-90	104196	326.42
2-1/2x4	15	9-1/2	1-3/8	1	.31	3/4	F250040CSSTNN	104118	264.28	-----	
2-1/2x6	17	11-1/2	1-3/8	1	.31	3/4	F250060CSSTNN	104119	274.36	F250060CEETNN-90	104198	245.83
2-1/2x10	20	15-1/2	1-3/8	1	.31	3/4	-----		F250100CEETNN-90	104200	264.45
2-1/2x16	25	21-1/2	1-3/8	1	.31	3/4	F250160CSSTNN	104123	324.74	F250160CEETNN-90	104202	292.37
2-1/2x20	29	25-1/2	1-3/8	1	.31	3/4	F250200CSSTNN	104124	344.89	-----	
2-1/2x30	37	35-1/2	1-3/8	1	.31	3/4	F250300CSSTNN	104126	352.29	F250300CEETNN-90	104205	357.52
2-3/4x4	16	9-1/2	1-1/2	1	.38	3/4	F275040CSSTNN	104129	276.11	-----	
2-3/4x6	18	11-1/2	1-1/2	1	.38	3/4	F275060CSSTNN	104130	286.40	F275060CEETNN-90	104208	257.18
2-3/4x8	20	13-1/2	1-1/2	1	.38	3/4	F275080CSSTNN	104131	261.49	F275080CEETNN-90	104209	266.72
2-3/4x10	22	15-1/2	1-1/2	1	.38	3/4	F275100CSSTNN	104132	306.97	F275100CEETNN-90	104210	276.24
2-3/4x12	24	17-1/2	1-1/2	1	.38	3/4	-----		F275120CEETNN-90	104211	285.78
2-3/4x24	36	29-1/2	1-1/2	1	.38	3/4	-----		F275240CEETNN-90	104214	342.98
2-3/4x30	42	35-1/2	1-1/2	1	.38	3/4	F275300CSSTNN	104137	409.86	F275300CEETNN-90	104215	371.58
2-3/4x36	48	41-1/2	1-1/2	1	.38	3/4	F275360CSSTNN	104138	440.73	F275360CEETNN-90	104216	400.19

Weld on Accessories on previous page.

Qty. Disc: 2 pieces 2%, 5 pieces 5%, 10 pieces 10%

© 2011 by Baum Hydraulics Corporation

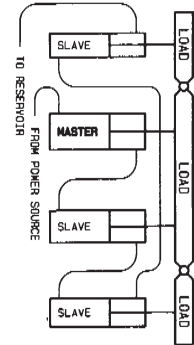
1-800-228-9222 www.baumhydraulics.com

Prices subject to change without notice

1" CLEVIS PINS ARE INCLUDED WITH EACH CYLINDER.

Cylinder Bore	Rod Diameter	8" STROKE RETRACTED LENGTH 20-1/4 PIN-TO-PIN			12" STROKE RETRACTED LENGTH 24-1/4 PIN-TO-PIN			16" STROKE RETRACTED LENGTH 28-1/4 PIN-TO-PIN		
		Part Number	Our Sequence Number	Per Each	Part Number	Our Sequence Number	Per Each	Part Number	Our Sequence Number	Per Each
5	1-1/2	AM-2532	103950	\$553.91	AM-2534	103980	\$604.72	AM-2536	104010	\$652.88
4-3/4	1-1/2	AM-2538	103952	548.92	AM-2540	103982	587.64	AM-2542	104012	636.01
4-1/2	2	AM-2544	103954	538.10	AM-2546	103984	576.08	AM-2548	104014	623.49
4	1-3/8	AM-2550A	103956	430.97	AM-2552A	103986	446.25	AM-2554A	104016	509.47
3-3/4	1-3/8	AM-2556A	103958	426.73	AM-2558A	103988	474.67	AM-2560A	104018	504.06
3-1/2	1-1/4	AM-2562	103960	364.78	AM-2564	103990	420.36	AM-2566	104020	443.38
3-1/4	1-1/4	AM-2568	103962	355.34	AM-2570	103992	406.15	AM-2572	104022	430.12
3	1-1/4	AM-2574	103964	340.28	AM-2576	103994	366.37	AM-2578	104024	410.08

Lion Rephasing cylinders on page M1



NOTES:

- Master cylinder provides power for the entire system
- Each cylinder in series has less pressure in proportion to the load on it
- Designed for use in a series cylinder circuit at a maximum of 3000 PSI, cylinder not to be used at 3000 PSI in push or pull as a single cylinder
- Stroke control assemblies may be installed on 8" stroke models
- Can be used with remote stroke control valve PM-SC-10
- Can be used with holding valves HC-V-AA21 and HC-V-AA22
- Master cylinder equipped with series/rephase and stroke control are available. Contact Prince Sales Department.
- Custom designs in welded or tie-rod style for larger or smaller bore sizes
- Exact matched sets available
- Contact Prince Engineering Department for special applications

PRINCE STROKE CONTROL ASSEMBLIES

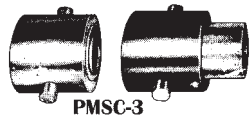
Date: 2500



PMSC-1 & PMSC-8

THREE-SLEEVE STROKE CONTROL ASSEMBLY

Practical, efficient and easily adapted to Prince Standard Series Cylinders. Positive stroke control adjustment. Open 5-5/8" Closed 2-1/2"
PMSC-1 Adapting Sleeve Thread size 1"-14 and will accept shaft size thru 1-1/8" diameter. Will fit model: 8408.
PMSC-8 Adapting Sleeve Thread size 1-1/8"-12 and will accept shaft size thru 1-3/8" diameter. Will fit models: 9108, 9208, 9308A, 7008, 7108, 7208A, 9208, 9008, 32008, 32508, 33008, 33508, 42008, 42508, & 43008.



PMSC-3

TWO-SLEEVE STROKE CONTROL ASSEMBLY

Open 3-1/2" Closed 2-5/16"
PMSC-3 Adapting Sleeve Thread size 1-1/2"-12 and will accept 1-1/2" shaft size. Will fit models: 8608 and 43508.

Part Number	Thread Size	Wt. Lbs.	Our Sequence Number	Per Each
PMSC-1	1	3	731584	\$92.14
PMSC-3	1-1/2	3	731648	76.57
PMSC-8	1-1/8	3	731712	97.88
PMSC-11	1-5/16	3	731711	114.41

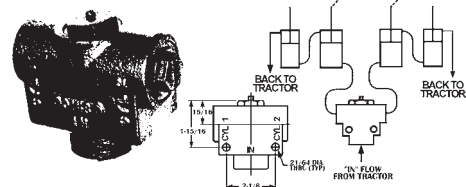
CONCERNING CYLINDER WARRANTY

If you have a cylinder warranty question or a possible defective part, please call us first! Depending on which part is defective and which manufacturer, each situation is handled differently. Generally the complete cylinder will have to be inspected by factory engineers.

Again, please call first.

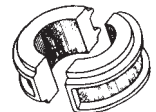
NOTE: Misalignment or binding causes most cylinder shafts to bend or break, therefore cylinder manufacturers do not warranty their shafts.

PRINCE STROKE CONTROL VALVE



Number	For	Our Sequence #	Per Each
PM-SC-10	3/4" O-Ring	731750	\$112.56

NEW "WHOA" ALUMINUM STROKE CONTROL SEGMENTS



98 & 99 have 7/8, 1, 1-1/4, & 1-1/2 inch Segments
 96 & 97 have 1, 1-1/2, 2, & 4-1/4 inch Segments

Number	Shaft Size	Wt. Lbs.	Our Sequence #	Per Each
98/99	1-1/8 thru 1-1/2	1-1/3	575693	\$41.64
96/97	1-3/4 thru 2	4	575701	76.51

PRINCE WELDED CYLINDER

Date: 2000

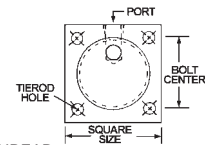
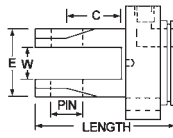
Max. Pressure - 3000 PSI
 3/4" Work Ports
 All with 1-1/2" Pinholes



Size Inches Bore x Stroke	Wt. Lbs.	Prince Weld-A-Cylinder Number	Shaft Diam. Inches	Overall Length Retracted Inches	Our Sequence Number	Per Each
5 x 8	75	21008	2-1/2	19	103756	\$810.11
5 x 24	85	21012	2-1/2	23	103755	876.92
5 x 16	90	21016	2-1/2	27	103754	915.94
5 x 20	105	21020	2-1/2	31	103753	979.77
5 x 24	115	21024	2-1/2	35	103752	1052.19
5 x 36	145	21036	2-1/2	47	103751	1230.88
6 x 8	100	22008	3	19	103750	1009.31
6 x 12	110	22012	3	23	103749	1064.43
6 x 16	125	22016	3	27	103748	1141.15
6 x 24	150	22024	3	35	103747	1321.27
6 x 30	170	22030	3	41	103746	1462.70
6 x 36	190	22036	3	47	103745	1604.13

Cylinder Discount: 2 pieces 2%, 5 pieces 5%, 10 pieces 10%

REPAIR PARTS FOR CROSS and PRINCE BASE END OR BUTT END FOR TIE-ROD CYLINDERS



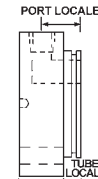
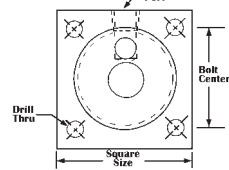
Cylinder Bore Inches	Square Size Inches	Over All Lgth. Inches	C Throat Depth	W Throat Width	Tie-Rod Hole *** Diam.	E Cleevis Ear Inches	Bolt Center Inches	Pin Hole Inches	PIPE THREAD Base End Part Number	Pipe Port	Our Sequence Number	Per Each	ORING THREAD			
													Base End Part Number	O-Ring Port	Our Sequence Number	Per Each
2*	3	4.3	1.7	1.1	3/8D	2.6	2.2	1.0	1D1503-3	1/2	729728	\$43.50	1411000SF	3/4	733770	\$42.57
2 Hvy	3-3/8	4.5	1.8	1.1	1/2T	2.4	2.5	1.0	141100001	1/2	733660	42.04	141100023	3/4	733771	42.04
2-1/2	3-3/8	4.5	1.8	1.1	1/2T	2.4	2.5	1.0	141300001	1/2	733680	55.72	14130005SF	3/4	733772	47.67
3*	3-7/8	4.4	1.6	1.1	1/2D	2.7	2.9	1.0	1D1507-4	1/2	729856	59.72	141500043	3/4	733774	50.70
3	3-7/8	4.5	1.8	1.1	1/2T	2.4	2.8	1.0	141500001	1/2	733696	72.61				
3*	3-7/8	4.4	1.6	1.1	1/2T	2.4	2.9	1.25	1D1507-13	1/2	731268	64.78	1417000SF	3/4	733777	64.07
3-1/2*	4-3/8	4.6	1.6	1.2	9/16D	2.9	3.2	1.0	1D1509-4	1/2	729920	69.45				
3-1/2	4-1/4	5.3	2.1	1.2	1/2T	2.7	3.2	1.0	141700002	1/2	733710	78.12	1419005SF	3/4	733779	101.13
3-1/2*	4-3/8	4.6	1.6	1.2	9/16D	2.9	3.2	1.25	1D1509-13	1/2	731270	72.31				
4*	5	5.1	2.0	1.2	5/8D	3.0	3.8	1.0	1D1511-4	1/2	729984	79.86	142100035	3/4	733780	100.44
4	5	5.3	1.8	1-1/16	5/8T	2.7	3.8	1.0	141900006	1/2	733715	122.21				
4*	5	5.1	2.0	1.2	5/8D	3.0	3.8	1.25	1D1511-13	1/2	731272	82.78	142100035	3/4	733780	100.44
5*	5-3/4	5.5	2.62	1.312	1/2D	2.7	4.6	1.25	142100001	1/2	733720	128.41				
5*	5-3/4	5.75	3.25	1.37	3/4D	3.3	4.5	1.25	1D1515-15	3/4	731276	130.64	142100035	3/4	733780	100.44
5*	5-3/4	5.75	3.25	1.37	3/4D	3.3	4.5	1.0	1D1515-4	3/4	731274	125.55				

*** D= Drilled T= Tapped

** Prince has 2 same thread ports 90° offset from each other

** Cross has 1 port 90° offset from pinhole

TIE-ROD GLAND OR HEAD END FOR TIE-ROD CYLINDERS

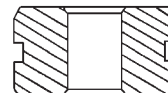


Oring Thread TIE-ROD CYLINDERS also available in 3000 PSI

Cylinder Bore Inches	Rod Diam. Inches	Square Size Inches	Width Inches	Tube Locate	Port Locate	Bolt Center Inches	PIPE THREAD Part Number	Pipe Port	Our Sequence Number	Per Each	ORING THREAD			
											Base End Part Number	O-Ring Port	Our Sequence Number	Per Each
2	1	2-7/8	2-1/4	1/2	1.1	2.2	081100006	1/2	733475	\$41.02	081100101	3/4	733641	\$41.02
2*	1-1/16	3	2-7/8	1/2	1.3	2.1	1D1153-3	3/8	730048	41.03	081100099	3/4	733642	44.42
2 Hvy	1-1/8	3-3/8	2-3/8	1/2	1.2	2.5	081100005	1/2	733470	50.01				
2-1/2*	1-1/16	3-3/8	1.9	.55	1.25	2.5	1D1155-3	3/8	730112	54.70	081300146	3/4	733643	44.42
2-1/2	1-1/8	3-3/8	2-3/8	1/2	1.25	2.5	081300007	1/2	733490	44.42				
2-1/2	1-1/4	3-3/8	2-3/8	--	--	2.5	081300005	1/2	733480	88.84	081300145	3/4	733644	51.39
3	1-1/8	3-7/8	1-15/16	1/2	1.2	2.5	081500004	1/2	733504	44.23	081500230	3/4	733645	51.94
3*	1-1/4	3-7/8	2.15	.55	1.4	2.8	1D1157-13	1/2	730176	63.64	081500227	3/4	733646	45.29
3	1-3/8	3-7/8	1-15/16	1/2	1.25	2.8	081500007	1/2	733530	76.05				
3*	1-1/2	3-7/8	2.15	.55	1.4	2.8	1D1157-22	1/2	730178	64.34	081700182	3/4	733647	50.38
3-1/2	1-1/8	4-1/4	1-13/16	1/2	1.2	3.2	081700008	1/2	733568	50.38				
3-1/2*	1-1/4	4-3/8	2.2	.55	1.4	3.2	1D1159-4	1/2	730240	69.07	081700178	3/4	733648	69.30
3-1/2	1-3/8	4-1/4	1-13/16	1/2	1.2	3.2	081700007	1/2	733540	73.43				
3-1/2*	1-1/2	4-3/8	2.2	.55	1.4	3.2	1D1159-13	1/2	731278	71.57	081900231	3/4	733649	86.11
4*	1-1/4	5	2	.57	1.4	3.75	1D1161-4	1/2	730304	84.88				
4	1-1/2	5	1-13/16	5/8	1.4	3.8	081900006	1/2	733632	90.22	081900230	3/4	733650	114.77
4*	1-1/2	5	1-13/16	5/8	1.4	3.8	1D1161-13	1/2	730330	87.08				
4	1-3/4	5	1-13/16	5/8	1.4	3.8	081900005	1/2	733620	120.83	081900232	3/4	733626	141.36
4	2	5	2-15/16	5/8	1.4	3.8								
5*	1-1/2	6	--	.68	1.5	4.5	1D1165-4	1/2	731282	101.49	082100183	7/8	733651	99.47
5	1-3/4	5-3/4	--	--	--	4.5	082100004	3/4	733634	78.31				
5*	2	6	2-1/2	.56	1.4	4.5	1D1165-15	1/2	731284	101.49	082100183	7/8	733651	99.47
5	2	5-3/4	2-1/2	9/16	1-5/8	4.5	082100003	3/4	733640	97.15				

Seal kits listed on page M4

PISTONS FOR CYLINDERS



Cylinder Bore Inches	Inner Diam. Inches	Width Inches	Inset Inches	Piston Part Number	Our Sequence Number	Piston Each	Piston Seal Kit Part Number	Our Sequence Number	Seal Kit Each
2	3/4	1	--	071100004	733390	22.46	SK-071100004	EE2255	2.16
2-1/2*	3/4	1	3/8	1D1401-250	729716	27.93	SK-1D1401-250	EE21202	2.87
2-1/2	3/4	1	--	071300004	733392	27.83	SK-071300004	EE22555	2.82
3*	3/4	1	3/8	1D1401-300	729718	33.12	SK-1D1401-300	EE21203	3.31
3	3/4	1	--	071500003	733394	32.24	SK-071500003	EE2256	3.27
3-1/2	3/4	1	--	071700005	733396	39.47	SK-071500005	EE22565	4.16
3-1/2	7/8	1	--	071700184	733397	38.99	SK-071700184	EE22567	4.15
3-1/2*	1	1	3/8	1D1401-350	729720	44.65	SK-1D1401-350	EE21201	4.23
4*	1	1	3/8	1D1401-400	729722	50.72	SK-1D1401-400	EE21204	4.94
4	1	1-1/16	--	071900006	733398	48.50	SK-071900006	EE2257	4.86
5*	1-1/4	1-3/4	3/4	1D1401-500	729724	74.14	SK-1D1401-500	EE21205	8.42
5	1-1/4	1-1/16	--	072100002	733399	94.68	SK-072100002	EE2258	8.39

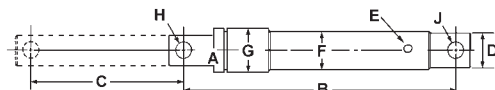
* Fits Cross Tie-Rod Cylinders

PROMPT
WAREHOUSE
SERVICE

PRICES
SUBJECT TO
CHANGE
WITHOUT
NOTICE

BAUM SNOW PLOW CYLINDERS

Single-Acting Displacement Cylinders
with Pinhole in Shaft & Butt End



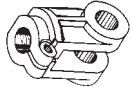
Cylinder Part Number	Bore Size Inches	C Stroke Inches	Our Sequence Number	Per Each	Port Size Inches	A Shaft Size Inches	Center to Center Collapsed Inches	Butt End Diam. Inches	F Outside Diam. Inches	H-J Fit Pin Size Inches	Collar Size Inches	Uses Seal Kit Number	Our Sequence Number	Per Each	
															CS-150-6
CS-150-10	1-1/2	x	10	177693	199.58	1/4	1-1/2	17	1-3/4	2	1	2-3/8	05117	G08555	\$6.14
CS-200-6	2	x	6	177694	268.81	1/4	2	13	2-1/4	2-1/2	1	2-7/8	-----	-----
CS-200-10	2	x	10	177695	277.00	1/4	2	17-1/4	2-1/4	2-1/2	1	2-7/8	-----	-----
CS-250-10	2-1/2	x	10	177696	336.53	3/8	2-1/2	18	2-3/4	3	1	3-3/8	05137	177508	42.10
CS-300-10	3	x	10	177697	478.33	3/8	3	18	3-1/4	3-1/2	1	4	05147	177510	50.82
CS-300-12	3	x	12	177698	506.95	3/8	3	20	3-1/4	3-1/2	1	4	05147	177510	50.82

All plows but Meyer take 1" Pin. Use 5/8 x 1 Bronze Bushing to reduce bore for Meyer.



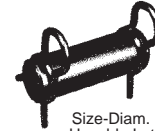
Cross Part Number	Shaft Diam.	For Cylinder Diameter	Piston End Diam., Thd.	Clevis End Diam., Thd.	Length Inches	Our Sequence Number	Per Each
1D0203-1475	1-1/16	2 & 2-1/2 x 8" DB	3/4-16	1-1/16-12	14-3/4	730368	\$65.17
1D0219-1475	1-1/4	3 x 8" DB	3/4-16	1-1/4-12	14-3/4	730752	87.08
1D0220-1488	1-1/4	4 x 8" DB	1-14	1-1/4-12	14-3/4	730816	86.35
1D0209-1412	1-1/2	5 x 8" DB	1-1/4-12	1-1/4-12	14-1/8	730624	101.49
1D0215-1462	1-1/4	3508" with & without stop	1-14	1-1/4-12	14-3/4	730688	86.35
1D0219-1475	1-1/4	308" with & without stop	3/4-16	1-1/4-12	14-3/4	730752	87.08
1D0220-1488	1-1/4	408" with & without stop	1-14	1-1/4-12	14-3/4	730816	86.35

SHAFT CLEVIS FOR CROSS CYLINDERS



Choose your clevis by the thread size and pinhole diameter. All clevis here are the split type and made of ductile iron.

CYLINDER CLEVIS PINS



Date: 3300

Clearance Thread Size	Overall Pinhole Diameter	Throat Between Ears	Clevis Width Inches	Clearance Inches	Part Number	Our Sequence Number	Per Each	Clevis Pin Part Number	Size-Diam. & Useable Lgth.	Fits Cylinder Size	Our Sequence Number	Per Each		
1-1/16-12	1	1.1	2.6	2.5	1D1003-3	730880	\$35.96	1017C w/o hole	1 x 2-1/8	2 thru 3-1/2	185864	\$3.91		
1-1/4-12	1	1.2	2.7	2.5	1D1003-5	731008	37.35	1022C w/o hole	1 x 2-3/4	2 thru 3-1/2	185868	4.51		
1-1/4-12	1-1/4	1.2	2.7	2.5	1D1014-12	731020	42.10	10-X Replacement Clip for Above Clevis Pins					602655	0.59

SEAL KITS FOR CROSS & LANTEX TIE-ROD CYLINDERS

Specify Bore, Diameter, Stroke, Shaft Size & whether depth control, or standard double-acting. Each seal kit consists of: 3 piston and static seals, 2 shaft seals, 1 piston gasket and 1 wiper. DA/DB = Double Acting Tie Rod DC = Hyd. Depth Control DR = Rephasing Cylinder DE = Mechanical Depth Control DCR = Hyd. Depth Control for Rephasing Cylinder



Part Number	Shaft Diam.	Cylinder Diameter	Our Sequence Number	Per Each
1C4642	3/4	1-1/2 DB	EE1815	\$5.18
1C4244	1-1/16	2 DA	EE1710	5.42
1C4623	1-1/8	2 DB	EE1735	6.67
1C4433	1-1/16	2-1/2 DA	EE1725	5.98
3C4385	1-1/8	2-1/2 DB	EE1875	7.27
1C4982	1-1/4	2-1/2 DB	EE1835	5.79

Part Number	Shaft Diam.	Cylinder Diameter	Our Sequence Number	Per Each
1C4434	1-1/16	3 DB	EE1730	6.43
1C4147	1-1/8	3 DB	EE1705	7.68
1C4630	1-1/2	3 DB	EE1795	7.56
1C4629	1-1/4	3 DB & DE	EE1790	6.24
3C8706	1-1/4	3 DR & DCR	EE19146	12.40
3C7681	1-1/4	3 DC	EE1900	11.02

Date: 2500 **SEAL KITS FOR LANTEX TIE-ROD CYLINDERS**

Part Number	Shaft Diam.	Cylinder Diameter	Our Sequence Number	Per Each
3104-34	1-1/8	2	EE2130	\$7.08
3105-34	1-1/8	2-1/2	EE2131	4.13
3106-34	1-1/4	2-1/2	EE2132	5.56
3107-34	1-1/4	3	EE2133	6.12
3108-34	1-1/2	3	EE2134	6.30
3109-34	1-1/4	3-1/2	EE2135	7.65
3110-34	1-1/2	3-1/2	EE2136	7.72
3111-34	1-1/2	4	EE2137	8.31
3112-34	1-3/4	4	EE2138	11.84
3113-34	1-3/4	5	EE2139	15.95

Part Number	Shaft Diam.	Cylinder Diameter	Our Sequence Number	Per Each
3C8704	1-1/4	3-1/4 DR	EE19144	11.53
3C8702	1-1/4	3-1/2 DR & DCR	EE19142	13.59
1C4429	1-1/4	3-1/2 DB & DE	EE1715	7.34
1C4631	1-1/2	3-1/2 DA	EE1800	8.61
3C7682	1-1/4	3-1/2 DC	EE1903	13.19
3C7683	1-1/2	3-1/2 DC	EE1905	14.46
3C5781	1-3/4	3-1/2 DC	EE1906	18.13
3C8703	1-3/8	3-3/4 DR	EE19143	19.79

Part Number	Shaft Diam.	Cylinder Diameter	Our Sequence Number	Per Each
1C4430	1-1/4	4 DB & DE	EE1720	9.74
1C4637	1-1/2	4 DB & DE	EE1805	9.36
3C7060	1-1/2	4 DC	EE1908	15.53
1C4638	2	4 DB	EE1810	16.19
3C7308	1-1/4	4 DC	EE1907	14.26
3C7684	1-3/4	4 DC	EE1910	19.20
3C8698	1-3/8	4 DR & DCR	EE19131	22.78
3C8613	2	4 DC	EE1913	22.36

Part Number	Shaft Diam.	Cylinder Diameter	Our Sequence Number	Per Each
3C8705	1-3/8	4-1/4 DR	EE19145	21.01
3C8701	1-1/2	4-1/2 DR & DCR	EE19141	19.85
3C8721	1-1/2	4-1/2 DC	EE1915	18.29

Part Number	Shaft Diam.	Cylinder Diameter	Our Sequence Number	Per Each
3C8614	1-3/4	4-1/2 DC	EE1912	21.96
3C8714	2	4-1/2 DC	EE1916	25.12
3C8700	1-1/2	4-3/4 DR	EE1914	20.48
1C4654	1-1/2	5 DB	EE1820	14.60
3C8722	1-1/2	5 DC	EE1918	22.57
3C8723	1-3/4	5 DC	EE1919	26.24
3C8699	1-1/2	5 DR & DCR	EE19132	21.94
1C4655	2	5 DB	EE1825	21.43
3C8612	2	5 DC	EE1920	29.40
3C7810		DC POPPET ASSEMBLY	EE1922	0.62

SEAL KITS FOR MONARCH RED LION TIE-ROD CYLINDERS MADE IN CANADA

Kit Number	Bore Size	Rod Diam.	Our Sequence Number	Per Each	Rod Wiper	Piston Seal	Rod Seal
492901	2.0	1.12	G08300	\$9.70	MC	OR2B	OR1B
492903	2.5	1.12	G08305	10.17	MC	OR2B	OR1B
492905	2.5	1.25	G08310	11.42	MC	OR2B	OR1B
492907	3.0	1.25	G08315	7.37	MC	OR2B	OR1B
492909	3.0	1.5	G08320	12.61	MC	OR2B	OR1B
492911	3.5	1.25	G08325	14.31	MC	OR2B	OR1B
492913	3.5	1.5	G08330	13.99	MC	OR2B	OR1B
492915	4.0	1.25	G08335	16.03	MC	OR2B	OR1B
492917	4.0	1.5	G08340	12.49	MC	OR2B	OR1B
492919	4.0	1.75	G08345	13.36	MC	OR2B	OR1B
492921	4.0	2.0	G08350	20.69	MC	OR2B	OR1B

TOP LINK CYLINDER

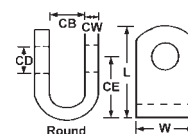


Category II only
1" Swivel Pinhole
1/2" NPT Ports

Date: 2000

Size Inches	Bore x Stroke	PSI	Prince Weld-A-Cylinder Number	Shaft Diam. Inches	Overall Length Retracted Inches	Our Sequence Number	Per Each
3 x 10	3000		BD-0228	1-3/8	20-7/8	104075	\$422.70

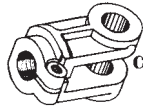
WELD-ON ROUND BENT CLEVIS



CD	CE	CB	CW	W	L	Part No.	Our Sequence Number	Per Each
1.25	3.56	1.18	.82	2.68	4.73	CLP1045	733748	\$66.78

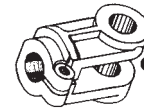
WELD-ON SQUARE BENT CLEVIS

Prince Part Number	Shaft Diam.	For Cylinder Diameter	Piston End Diam., Thd.	Clevis End Diam., Thd.	Length Inches	Our Sequence Number	Per Each
010400008	1	2 x 8"	3/4-16	1-14	15-1/2	733350	\$50.01
010500005	1-1/8	2-1/2 x 8", 3 x 8", 3-1/2 x 8"	3/4-16	1-1/8-12	15-1/2	733376	61.59
010729750A	1-3/8	3 x 24"	3/4-16	1-1/8-12	29-3/4	7333805	228.16
010800005	1-1/2	4 x 8"	1-14	1-1/2-12	15-1/2	733381	84.04



Clevis

SHAFT CLEVIS FOR PRINCE CYLINDERS
Choose your clevis by the thread size and pinhole diameter. All clevis here are the split type and made of ductile iron.



Clevis

Thread Size	Pinhole Diameter	C Clearance Between Ears	W Overall Width Inches	T Throat Clearance Inches	Clevis Part Number	Our Sequence Number	Per Each
7/8-14	1	1.1	2.5	2.1	100000451	732940	\$37.47
1-14	1	1.1	2.5	2.1	100000425	732800	34.58
1-1/8-12	1	1.1	2.5	2.0	100000423	732864	34.58
1-1/2-12	1	1.1	2.9	2.1	100000326	732992	77.43
1-1/2-12	1-1/4	1.1	2.9	2.3	100000362	732928	70.68

CYLINDER CLEVIS PINS



Less Clips

CLIPS FOR CLEVIS PINS



Clip

Clevis Pin Part Number	Size Diam. & Useable Length	Fits Cylinder Size	Our Sequence Number	Per Each	Use Clip Number	Our Sequence Number	Per Each
190400004	1 x 3-3/16	4, 5 bushed	733120	\$10.26	190400002	733248	\$2.20
190600016	1-1/4 x 3-3/16	5 cylinder	733184	14.40	190600003	733312	2.89

SEAL KITS FOR PRINCE TIE-ROD & WELDED CYLINDERS

Specify Bore, Diameter, Stroke, Shaft Size & whether standard double-acting (DA) or single-acting (SA). Each seal kit contains a complete set of back-up washers, O-Rings and wiper.



Part Number	Shaft Diam.	Cylinder Diam.	Cylinder Style	Our Sequence Number	Per Each
PMCK-3300	1	2	Welded	EE22464	\$8.08
PMCK-5400	1-3/8	2-1/2	Welded	EE22467	15.24
PMCK-3400	1-1/8	3	Welded	EE22465	12.26
PMCK-5500	1-1/2	3-1/2	Welded	EE22468	30.01
PMCK-8300	1-1/2	3	Welded	EE22475	17.03
PMCK-5600	2	4	Welded	EE22469	40.28
PMCK-7000	1-1/8	2-1/2	Tie-Rod	EE22471	10.22
PMCK-7100	1-1/8	3	Tie-Rod	EE22472	11.27
PMCK-7200	1-1/8	3-1/2	Tie-Rod	EE22473	13.42
PMCK-8400	1	2	Tie-Rod	EE22476	8.91
PMCK-8600	1-1/2	4	Tie-Rod	EE22477	15.40
PMCK-9000	1-1/8	2	Tie-Rod	EE22478	9.09
PMCK-9100	1-1/4	2-1/2	Tie-Rod	EE22479	10.45
PMCK-9200	1-3/8	3	Tie-Rod	EE22481	11.73
PMCK-9300	1-3/8	3-1/2	Tie-Rod	EE22482	13.96
PMCK-9400	1-3/4	4	Tie-Rod	EE22483	16.46
PMCK-8200	1-3/4	5	Tie-Rod	EE22474	30.12
PMCK-9500	2	5	Tie-Rod	EE22484	26.79
PMCK-9700	2	4	Tie-Rod	EE22485	21.38
PMCK-9900	2-1/2	5	Tie-Rod	EE22509	48.77
PMCK-15208	1-3/8	4	Tie-Rod	EE22511	7.61
PMCK-17908	1-1/2	4	Hyd-Stop	EE22512	15.26
PMCK-17916	1-3/4	4	Hyd-Stop	EE22513	16.30
PMCK-18608	1-1/4	3	Hyd-Stop	EE22514	12.85
PMCK-18616	1-3/8	3	Hyd-Stop	EE22515	13.07
PMCK-18708	1-1/4	3-1/2	Hyd-Stop	EE22516	13.99
PMCK-18716	1-1/2	3-1/2	Hyd-Stop	EE22517	14.66
PMCK-19400	3/4	1-1/2	Welded	EE22521	12.71
PMCK-19500	1-1/8	2	Welded	EE22522	8.78
PMCK-19600	1-1/4	2-1/2	Welded	EE22523	9.35
PMCK-19700	1-3/8	3	Welded	EE22524	9.17
PMCK-19800	1-1/2	3-1/2	Welded	EE22525	10.59
PMCK-19900	1-3/4	4	Welded	EE22526	12.72
PMCK-21000	2-1/2	5	Hvy Weld	EE2253	43.45
PMCK-22000	3	6	Hvy Weld	EE22535	68.47
PMCK-42000	1-1/8	2	Welded	732694	87.55
PMCK-42500	1-1/4	2-1/2	Welded	7326942	67.76
PMCK-43000	1-3/8	3	Welded	7326943	62.50
PMCK-43500	1-1/2	3-1/2	Welded	732695	67.38
PMCK-44000	1-3/4	4	Welded	732696	72.02

Part Number	Shaft Diam.	Cylinder Diam.	Cylinder Style	Our Sequence Number	Per Each
PMCK-AM2532	1-1/2	5	Tie-Rod	732700	\$113.35
PMCK-AM2534	1-1/2	5	Tie-Rod	732716	113.35
PMCK-AM2536	1-1/2	5	Tie-Rod	732732	113.35
PMCK-AM2538	1-1/2	4-3/4	Tie-Rod	732702	120.55
PMCK-AM2540	1-1/2	4-3/4	Tie-Rod	732718	120.55
PMCK-AM2542	1-1/2	4-3/4	Tie-Rod	732734	120.55
PMCK-AM2544	2	4-1/2	Tie-Rod	732704	104.58
PMCK-AM2546	2	4-1/2	Tie-Rod	732720	104.58
PMCK-AM2548	2	4-1/2	Tie-Rod	732736	104.58
PMCK-AM2550	1-3/8	4	Tie-Rod	732706	97.32
PMCK-AM2552	1-3/8	4	Tie-Rod	732722	97.38
PMCK-AM2554	1-3/8	4	Tie-Rod	732738	57.93
PMCK-AM2556	1-3/8	3-3/4	Tie-Rod	732708	107.40
PMCK-AM2558	1-3/8	3-3/4	Tie-Rod	732724	107.40
PMCK-AM2560	1-3/8	3-3/4	Tie-Rod	732740	69.83
PMCK-AM2562	1-1/4	3-1/2	Tie-Rod	732710	89.55
PMCK-AM2564	1-1/4	3-1/2	Tie-Rod	732726	87.17
PMCK-AM2566	1-1/4	3-1/2	Tie-Rod	732742	89.55
PMCK-AM2568	1-1/4	3-1/4	Tie-Rod	732712	91.43
PMCK-AM2570	1-1/4	3-1/4	Tie-Rod	732728	79.28
PMCK-AM2572	1-1/4	3-1/4	Tie-Rod	732744	91.43
PMCK-AM2574	1-1/4	3	Tie-Rod	732714	81.73
PMCK-AM2576	1-1/4	3	Tie-Rod	732730	81.73
PMCK-AM2578	1-1/4	3	Tie-Rod	732746	81.73

SEAL KITS FOR PRINCE TIE-ROD SLAVE CYLINDERS

Part Number	Shaft Diam.	Cylinder Diam.	Cylinder Style	Our Sequence Number	Per Each
PMCK-AM2568	1-1/4	3-1/4	Tie-Rod	732712	91.43
PMCK-AM2570	1-1/4	3-1/4	Tie-Rod	732728	79.28
PMCK-AM2572	1-1/4	3-1/4	Tie-Rod	732744	91.43
PMCK-AM2574	1-1/4	3	Tie-Rod	732714	81.73
PMCK-AM2576	1-1/4	3	Tie-Rod	732730	81.73
PMCK-AM2578	1-1/4	3	Tie-Rod	732746	81.73
PMCK-AM2568	1-1/4	3-1/4	Tie-Rod	732712	91.43
PMCK-AM2570	1-1/4	3-1/4	Tie-Rod	732728	79.28
PMCK-AM2572	1-1/4	3-1/4	Tie-Rod	732744	91.43
PMCK-AM2574	1-1/4	3	Tie-Rod	732714	81.73
PMCK-AM2576	1-1/4	3	Tie-Rod	732730	81.73
PMCK-AM2578	1-1/4	3	Tie-Rod	732746	81.73
PMCK-AM2568	1-1/4	3-1/4	Tie-Rod	732712	91.43
PMCK-AM2570	1-1/4	3-1/4	Tie-Rod	732728	79.28
PMCK-AM2572	1-1/4	3-1/4	Tie-Rod	732744	91.43
PMCK-AM2574	1-1/4	3	Tie-Rod	732714	81.73
PMCK-AM2576	1-1/4	3	Tie-Rod	732730	81.73
PMCK-AM2578	1-1/4	3	Tie-Rod	732746	81.73

SEAL KITS FOR PRINCE TIE-ROD MASTER CYLINDERS with STROKE CONTROL

Part Number	Shaft Diam.	Cylinder Diam.	Cylinder Style	Our Sequence Number	Per Each
PMCK-AM2502	1-1/2	5	Tie-Rod	732756	89.49
PMCK-AM2504	1-1/2	5	Tie-Rod	732764	89.49
PMCK-AM2506	1-1/2	5	Tie-Rod	732774	89.49
PMCK-AM2508	1-1/2	4-1/4	Tie-Rod	732754	83.18
PMCK-AM2510	1-1/2	4-1/4	Tie-Rod	732762	83.20
PMCK-AM2512	1-1/2	4-1/4	Tie-Rod	732770	83.15
PMCK-AM2514	1-3/8	4	Tie-Rod	732752	65.13
PMCK-AM2516	1-3/8	4	Tie-Rod	732760	65.13
PMCK-AM2518	1-3/8	4	Tie-Rod	732768	81.40
PMCK-AM2520	1-1/4	3-1/2	Tie-Rod	732750	57.93
PMCK-AM2522	1-1/4	3-1/2	Tie-Rod	732758	76.83
PMCK-AM2524	1-1/4	3-1/2	Tie-Rod	732766	76.83

SEAL KITS FOR NEW PRINCE 3,000 PSI TIE-ROD CYLINDERS

Part Number	Shaft Diam.	Cylinder Diam.	Cylinder Style	Our Sequence Number	Per Each
PMCK-B200000	1-1/8	2	3,000 Tie-Rod	732780	37.95
PMCK-B250000	1-1/4	2-1/2	3,000 Tie-Rod	732782	50.48
PMCK-B300000	1-3/8	3	3,000 Tie-Rod	732784	43.21
PMCK-B350000	1-3/8	3-1/2	3,000 Tie-Rod	732786	49.35
PMCK-B400000	1-3/4	4	3,000 Tie-Rod	732790	71.02
PMCK-B500000	2	5	3,000 Tie-Rod	732792	77.78

PRINCE HYDRAULIC STOP POPPET VALVE ASSEMBLY



180901022	Hydraulic Stop Cylinder	733765	\$65.31
-----------	-------------------------	--------	---------